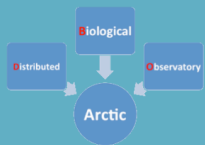


# The Distributed Biological Observatory Data Archive

at the Earth Observing Laboratory  
of the National Center for  
Atmospheric Research, U.S.





Data Access  
 About  
 Archive Summary  
 How to Submit Data  
 Data Policy

# Distributed Biological Observatory

An Arctic Data Archive Linking Physics & Biology

**NEW!** Submit Data



Long Term DBO Data Archive



Clear all selections

Filters: DBO Site 1

Transect -

Clear

- DBO 1 - Southern St. Lawrence
- DBO 2 - Chirikov Basin
- DBO 3 - Southern Chukchi Sea
- DBO 4 - NE Chukchi Sea
- DBO 5 - Barrow Canyon

Researcher +

Vessel +

Year +

Keywords -

Clear

- Benthos
- Chlorophyll
- CTD
- Marine Mammal Survey
- Mooring
- Nutrients
- Phytoplankton
- Seabird Survey
- Sediment
- Zooplankton

Dataset Title	Author/Researcher	Transect	Vessel	Dates	Keywords	Comments
Arctic Whale Ecology Study (ARCWEST) / Chukchi Acoustic, Oceanographic and Zooplankton Extension Study (CHAOZ-X) 2014	Berchok, Catherine, Sigrid Salo, Sue Moore	1, 2, 3, 4, 5	R/V Aquila	2014-09-08 to 2014-10-20		The data set is In Progress.
Arctic Whale Ecology Study (ARCWEST) 2013	Napp, Jeff, Sue Moore, Catherine Berchok, Phyllis Stabeno	1, 3, 5	R/V Aquila	2013-08-01 to 2013-09-30		The data set is In Progress.
Bering Arctic Subarctic Integrated Survey (BASIS) 2014	Eisner, Lisa, Ed Farley	1	Oscar Dyson	2014-09-21 to 2014-10-14		The data set is In Progress.
Canada's Three Oceans (C3O) - DBO 2012	Vagle, Svein	1, 2, 3, 5	CCGS Sir Wilfrid Laurier	2012-07-04 to 2012-07-22		The data set is In Progress.
Canada's Three Oceans (C3O) - DBO plus Japan Agency for Marine-Earth Science and Technology (JAMSTEC) DBO moorings 2013	Grebmeier, Jacqueline M., Takashi Kikuchi, Svein Vagle	1, 2, 3, 4, 5	CCGS Sir Wilfrid Laurier	2013-07-04 to 2013-07-25	Mooring, Sediment	The data set is In Progress.
Canada's Three Oceans (C3O) - DBO plus Japan Agency for Marine-Earth Science and Technology (JAMSTEC) DBO moorings 2014	Vagle, Svein, Jacqueline M. Grebmeier, Takashi Kikuchi	1, 2, 3, 4, 5	CCGS Sir Wilfrid Laurier	2014-07-04 to 2014-07-23	Mooring, Sediment	The data set is In Progress.
Chinese National Arctic Research Expedition (CHINARE) 2012	He, Jianfeng	1, 2, 3	Xuelong	2012-07-10 to 2012-09-15		The data set is In Progress.

<http://dbo.eol.ucar.edu>



Data Access  
About  
Archive Summary  
How to Submit Data  
Data Policy

# Distributed Biological Observatory

An Arctic Data Archive Linking Physics & Biology

**NEW!** [Submit Data](#)       

[Long Term DBO Data Archive](#)



## DBO Archive Summary (expected datasets)

**Total Number of Datasets: 58**

<b>Author/PI:</b> Total defined: 58	<b>Category:</b> Total defined: 125	<b>Event:</b> Total defined: 58	<b>Site:</b> Total defined: 89	<b>Year:</b> Total defined: 58
Arrigo, Kevin, Robert Pickart	1	Alaska Endeavor	1	2014
Ashjian, Carin	5	Alaskan Enterprise	1	2013
Berchok, Catherine, Sigrid Salo, Sue ...	1	Annika Marie	5	2012
Crane, Kathy, Phyllis Stabeno	1	Araon	5	2011
Crane, Kathy, Rebecca Woodgate	2	CCGS Amundsen	2	2010
Day, Bob	1	CCGS Louis S. St-Laurent	1	
Day, Bob, John Burns, Tom Weingartner	1	CCGS Sir Wilfrid Laurier	5	
Eisner, Lisa, Ed Farley	1	F/V Mystery Bay	1	
Fortier, Louis, Martin Fortier, Keith ...	1	Fairweather	1	
Fortier, Martin, Keith Levesque	1	I/B Oden	1	
Grebmeier, Jacqueline M.	2	Mirai	4	
Grebmeier, Jacqueline M., Lee Cooper, ...	1	Norseman II	3	
Grebmeier, Jacqueline M., Svein Vagle	1	Oscar Dyson	1	
Grebmeier, Jacqueline M., Svein Vagle ...	1	Oshura-Maru	1	
Grebmeier, Jacqueline M., Takashi Kik ...	1	Professor Khromov	5	
Hartwell, Ian, Doug Dasher, Terri Lomax	1	R/V Aquila	3	
He, Jianeng	1	R/V Moana Wave	1	
He, Jianfeng	1	USCGC Healy	10	
He, Jingfeng, Yu Xingguang	1	Westward Wind	4	
Hirawake, Toru	1	Xuelong	3	
Inoue, Jun, Takashi Kikuchi	1			
Itoh, Motoyo	1			
Jakobsson, Martin	1			
Jay, Chad	1			
Kang, Sung-Ho	2			
Kang, Sung-Ho, Kyungho Chung	1			
Khang, Sung Ho	1			
Kikuchi, Takashi	2			
Lee, Sang, Kyungho Chung	1			
Murphy, Jim, Ed Farley	1			
Napp, Jeff, Catherine Berchok	1			
Napp, Jeff, Sue Moore, Catherine Berc ...	2			
Napp, Jeff, Sue Moore, Catherine Berc ...	1			
Pickart, Robert	5			
Pickart, Robert, Kevin Arrigo	1			
Pickart, Robert, Kevin Arrigo, Karen ...	1			
Vagle, Svein	1			
Vagle, Svein, Jacqueline M. Grebmeier ...	1			
Weingartner, Tom	1			
Weingartner, Tom, Bob Day, John Burns	1			
Whitledge, Terry	1			
Williams, Bill	1			
Woodgate, Rebecca	3			



# Distributed Biological Observatory

An Arctic Data Archive Linking Physics & Biology

**NEW!** [Submit Data](#)



Long Term DBO Data Archive



## Welcome to the Distributed Biological Observatory Data Archive

The data archive for the Distributed Biological Observatory (DBO) is envisioned as a change detection array along a latitudinal gradient extending from the northern Bering Sea to the Barrow Arc. DBO sampling is focused on transects centered on locations of high productivity, biodiversity and rates of biological change. The DBO sampling framework was initially tested during the successful 2010 Pilot Study, which consisted of international ship occupations of two of the DBO sites, one in the SE Chukchi Sea and one across upper Barrow Canyon. The DBO is specifically included in the draft US National Ocean Policy Strategic Plan. In addition, the Marine Working Group of the International Arctic Science Committee (IASC) has endorsed the DBO and is supporting similar activities in the Atlantic sector of the Arctic. The U.S. Interagency Arctic Research Policy Committee (IARPC), comprised of representatives from 13 Federal agencies, developed a five year plan (2013-2017) focused on seven research themes, with further development of the DBO included under the first theme: Sea ice and Marine Ecosystems.

The DBO IT is now focused on bringing together data from 2010-2013 sampling efforts, to demonstrate the value-added of this national and international, sampling shared-data approach to the investigation of biological responses to a rapidly changing Arctic marine ecosystem. Expanding from the Pacific Arctic sector, the DBO will also serve as a framework for international research coordination via the Arctic Council Circumpolar Biodiversity Monitoring Program (CBMP), and is recognized as a task of the pan-arctic Sustaining Arctic Observing Network (SAON) program.

## Related Links

### [Advanced Cooperative Arctic Data and Information Service \(ACADIS\)](#)

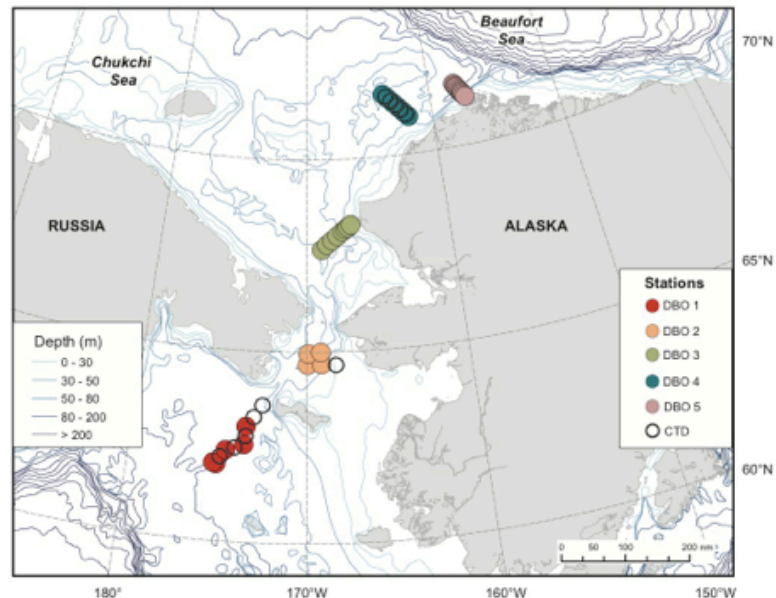
ACADIS is a secure data archive for the submission, long term preservation and access of research data of Arctic investigators and projects. ACADIS is supported by the United States National Science Foundation (NSF) Division of Polar Programs.

### [Woods Hole Oceanographic Institute DBO Cruise Database](#)

### [National Oceanic and Atmospheric Administration DBO Web Site](#)

### [Chukchi & Western Beaufort Circulation Study](#)

### [International Arctic Systems for Observing the Atmosphere \(IASOA\)](#)



The area of interest and specific station sites for the Distributed Biological Observatory. Click on a transect for information on the stations in that line..



© 2014 UCAR | [About EOL](#) | [Privacy Policy](#) | [Terms of Use](#) | [NCAR/EOL DBO Efforts](#)

Sponsored by



DBO stations DBO	Sep-13 Historic/SWL	Type sampling	decimal lat	decimal lon	Comments
Stn Name	Station Name	Type			
DBO1.1	SLIP-1	ADCP/ROS/NET/MUD*5	62.010	-175.060	DBO1 n=10
DBO1.2	SLIP-2	ADCP/ROS/NET/MUD*5	62.050	-175.210	NOAA-Stab
DBO1.3	SLIP-2b	CTD	62.219	-174.877	
DBO1.4	SLIP-3	ADCP/ROS/NET/MUD*5	62.390	-174.570	
DBO1.5	SLIP-3b	CTD	62.468	-174.083	
DBO1.6	SLIP-5	ADCP/ROS/NET/MUD*5	62.560	-173.550	
DBO1.7	SLIP-5b	CTD	62.787	-173.500	
DBO1.8	SLIP-4	ADCP/ROS/NET/MUD*5	63.030	-173.460	
DBO1.9	SLIP-4b	CTD	63.280	-173.080	
DBO1.10	SLIP-4c	CTD	63.604	-172.591	
DBO2.1	UTBS-5	ADCP/ROS/NET/MUD*5	64.670	-169.920	DBO2 n=5
DBO2.2	UTBS-2	ADCP/ROS/NET/MUD*5	64.680	-169.100	
DBO2.3	UTBS-2a	CTD	64.670	-168.235	
DBO2.4	UTBS-4	ADCP/ROS/NET/MUD*5	64.960	-169.890	
DBO2.5	UTBS-1	ADCP/ROS/NET/MUD*5	64.990	-169.140	
DBO3.1	UTN-5 (SEC-1)=hotspot	ADCP/ROS/NET/MUD*5	67.670	-168.960	DBO3 n=8
DBO3.2	SEC-2	ADCP/ROS/NET/MUD*2	67.783	-168.602	JAMSTEC
DBO3.3	SEC-3	ADCP/ROS/NET/MUD*2	67.898	-168.235	
DBO3.4	SEC-4	ADCP/ROS/NET/MUD*2	68.013	-167.867	
DBO3.5	SEC-5	ADCP/ROS/NET/MUD*2	68.128	-167.495	
DBO3.6	SEC-6	ADCP/ROS/NET/MUD*2	68.185	-167.308	
DBO3.7	SEC-7	ADCP/ROS/NET/MUD*2	68.242	-167.122	
DBO3.8	SEC-8	ADCP/ROS/NET/MUD*2	68.300	-166.935	
DBO4.1	DF005-CSESP	ADCP/ROS/NET/MUD*5	70.973	-161.902	DBO4 n=11
DBO4.1a	new	CTD	71.041	-162.088	moorings in
DBO4.2	BF005-CSESP	ADCP/ROS/NET/MUD*5	71.104	-162.267	
DBO4.2a	new	CTD	71.171	-162.450	
DBO4.3	BF009-CSESP	ADCP/ROS/NET/MUD*5	71.233	-162.636	
DBO4.3a	new	CTD	71.296	-162.812	
DBO4.4	BF013-CSESP	ADCP/ROS/NET/MUD*5	71.362	-163.009	
DBO4.4a	new	CTD	71.429	-163.200	
DBO4.5	BF017-CSESP	ADCP/ROS/NET/MUD*5	71.490	-163.388	
DBO4.5a	new	CTD	71.554	-163.573	
DBO4.6	BF021-CSESP	ADCP/ROS/NET/MUD*5	71.618	-163.772	
DBO5.10	BarC-10	ADCP/ROS/NET/MUD*2	71.620	-157.925	DBO 5 n=10
DBO5.9	BarC-9	ADCP/ROS/NET/MUD*2	71.578	-157.838	moorings in
DBO5.8	BarC-8	ADCP/ROS/NET/MUD*2	71.537	-157.753	JAMSTEC
DBO5.7	BarC-7	ADCP/ROS/NET/MUD*2	71.500	-157.660	others
DBO5.6	BarC-6	ADCP/ROS/NET/MUD*2	71.455	-157.583	
DBO5.5	BarC-5=hotspot	ADCP/ROS/NET/MUD*5	71.410	-157.490	
DBO5.4	BarC-4	ADCP/ROS/NET/MUD*2	71.372	-157.415	
DBO5.3	BarC-3	ADCP/ROS/NET/MUD*2	71.330	-157.332	
DBO5.2	BarC-2	ADCP/ROS/NET/MUD*2	71.288	-157.248	
DBO5.1	BarC-1	ADCP/ROS/NET/MUD*2	71.247	-157.165	

#### Type sampling

CTD only

ROS=CTD/Rosette

NET=Phytoplankton and zooplankton nets

MUD=5 mud grabs (e.g.0.1 m2 van Veen); 2=2 grabs (1 for sed/sieve for isotopes; 1 for identification)

#### Moorings

DBO1 area

DBO3 area

DBO4 area

DBO5 area

### Member sign in

Username:

Password:

Remember me | [Forgot password?](#)



## Welcome to the Metadata Submission Tool

Principal Investigators and other researchers associated with a project can login and submit metadata for data sets. Click on a project name to see additional details for the project.

### List of Recent Projects

#### DBO

Distributed Biological Observatory  
NSF 1204082, 1203906, 1204044  
1 Data Sets

The “Distributed Biological Observatory (DBO)” is envisioned as a change detection array along a latitudinal gradient extending from the northern Bering Sea to the Barrow Arc. DBO sampling is focused on transects centered on locations of high productivity, biodiversity and rates of biological change. The U.S. Interagency Arctic Research Policy Committee (IARPC), comprised of representatives from 13 Federal agencies, developed a five year plan (2013-2017) focused on seven research themes, with further development of the DBO included under the first theme: Sea ice and Marine Ecosystems. The DBO IT is now focused on bringing together data from 2010-2013 sampling efforts, to demonstrate the value-added of this national and international, sampling shared-data approach to the investigation of biological responses to a rapidly changing Arctic marine ecosystem.

### List of Most Recent Data Sets

### Create Data Set for DBO

Title \*

Summary

Dataset Version \*  Progress \*

Point of Contact \*

#### Temporal Coverage

Begin Date     :  End Date     :

Time Zone  UTC  Local Time

#### Spatial Coverage

Minimum (South) Latitude  Maximum (North) Latitude

Minimum (West) Longitude  Maximum (East) Longitude

#### Funding Information

Funding Agency \*  Award Number

#### Categorization & Instrumentation

Categories







Data Access  
 About  
 Archive Summary  
 How to Submit  
 Data  
 Data Policy

# Distributed Biological Observatory

An Arctic Data Archive Linking Physics & Biology

**NEW!** [Submit Data](#)       

[Long Term DBO Data Archive](#)



## Data Submission Procedures

The NCAR/Earth Observing Laboratory is prepared to accept your data sets and documentation for the Distributed Biological Observatory project.

### Data Submission Instructions

Data sets can be submitted using the MetaArch submission tool. To access the MetaArch submission tool, [click here](#).

If you are uncertain as to your login information for MetaArch or if you do not have a login, please contact us at [metaarch@eol.ucar.edu](mailto:metaarch@eol.ucar.edu).

A data set is a collection of related data and documentation files. For example, underway seawater sampling data collected aboard a cruise as compiled into one or more data files with the appropriate documentation would be considered a data set.

To submit a data set to the archive, fill out the "Create a Data Set" form for the DBO project. To log into MetaArch and immediately begin filling out this form, [click here](#).

Once your data set has been created, you can add files to the data set file list by clicking on the "Upload Files" link at the bottom of the data set display page, as shown below:

The screenshot shows the MetaArch web interface. The main page displays details for a dataset named "Another test dataset", including contact information, summary, and additional information. A modal window titled "Another test dataset - Upload Files" is open, showing a "Data Set File List" with two files: "Doc File: README.txt" and "Data File: CFL\_data\_submission.xls". Below the file list are "Add File" and "Remove empty/unused File(s)" buttons. A "Save Changes" button is highlighted with a red box. A blue box highlights the "Data / Documentation Files & Links" section, which shows the uploaded files: "Doc File: README.txt ([TXT], 1 kB)" and "Data File: CFL\_data\_submission.xls ([XLS], 168 kB)". A green arrow labeled "Navigates To" points from the "Save Changes" button to the "Upload Files" link in the "Data / Documentation Files & Links" section.

## Canada's Three Oceans (C3O) - DBO 2010

created by [Don Stott](#)

Point of Contact: [Jacqueline M. Grebmeier](#)

Funded by: NSF 1204082

### Summary

This dataset contains water nutrients, sediment, and infaunal biological data from the CCGS Sir Wilfred Laurier cruise between 07/06/2010 and 07/22/2010, as part of the Distributed Biological Observatory project. This dataset includes data from DBO transects 1, 2, 3, and 5.

### Additional Information

Project [DBO](#)

Observational Frequency criteria

Spatial Type point

Categories Biology, Oceanography

Platforms CTD ocean cast, Ship

Science Keyword [Oceans > Marine Sediments > Geotechnical Properties](#)

Location Keyword [Arctic Ocean > Chukchi Sea](#)

Platform Keyword [Ship](#)

Instrument Keyword [CTD](#)

ISO Topic [Oceans](#)

### Temporal Coverage

Begin Date 2010-07-06 00:00:00 PDT

End Date 2010-07-22 23:59:00 PDT

### Spatial Coverage

Minimum (South) Latitude 50

Maximum (North) Latitude 71



---

**Temporal Coverage**

---

Begin Date 2010-07-06 00:00:00 PDT

End Date 2010-07-22 23:59:00 PDT

---

**Spatial Coverage**

---

Minimum (South) Latitude 50

Maximum (North) Latitude 71

Minimum (West) Longitude -175

Maximum (East) Longitude -128

---

**Resolution**

---

Horizontal Resolution [point](#)

---

**Status, Restrictions, Tags, etc.**

---

Progress in work

Access Restrictions No restrictions

Language English

Metadata Version 0.4.1

Date Created 2014-10-28 16:07:48 PDT

Last Updated 2014-10-28 16:08:37 PDT

---

**Data / Documentation Files & Links**

---

[Upload Files](#) [Edit Links](#)Data / Documentation Files

- Data File: /scr/tmp/stott/MetaArch/files/stott/dataset\_73/SWL2010MasterStn\_Grebmeier.xls ([XLS], 58 kB)



Edit



Delete

# DBO Metadata

The metadata in the EOL DBO Data Archive comply with the Core Metadata for Geographic Datasets of the ISO 19115 standard

These metadata are stored in an EOL database

## Data Set Metadata - Formatted View

---

Title: Canada's Three Oceans (C3O) - DBO 2010

-----  
Point of Contact:

jgrebmei (Jacqueline M. Grebmeier)

Author:

stott (Don Stott)

Summary:

This dataset contains water nutrients, sediment, and infaunal biological data from the CCGS Sir Wilfred Laurier cruise between 07/06/2010 and 07/22/2010, as part of the Distributed Biological Observatory project. This dataset includes data from DBO transects 1, 2, 3, and 5.

Dataset Version: 0

-----  
Additional Information

-----  
Project:

DBO

Frequency:

criteria

Spatial Type:

point

Categories:

Biology

Oceanography

Platforms:

CTD ocean cast

Ship

Science Keyword:

Oceans > Marine Sediments > Geotechnical Properties

Location Keyword:

Arctic Ocean > Chukchi Sea

Platform Keyword:

Ship

Instrument Keyword:

CTD

ISO Topic:

Oceans

-----  
Temporal Coverage

-----  
Begin Date:

2010-07-06 00:00:00.0

End Date:

2010-07-22 23:59:00.0

-----  
Spatial Coverage

-----  
Minimum (South) Latitude:  
50.00000  
Maximum (North) Latitude:  
71.00000  
Minimum (West) Longitude:  
-175.00000  
Maximum (East) Longitude:  
-128.00000  
-----

-----  
Funding Information  
-----

Funding Agency:  
NSF  
Award Number:  
1204082  
-----

-----  
Resolution  
-----

Horizontal Resolution:  
point  
Vertical Resolution:  
null  
-----

-----  
Status, Restrictions, Tags, etc.  
-----

Progress:  
in work  
Access Restrictions:  
No restrictions  
Language:  
English  
Comments:  
null  
-----

-----  
External Link List  
-----

-----  
Data / Documentation File List  
-----

[DATA FILE]	58 kB
XLS (Excel Spreadsheet)	
/scr/tmp/stott/MetaArch/files/stott/dataset_73/SWL2010MasterStn_Grebmeier.xls	

-----

-----  
Metadata Version 0.4.1  
Date Created: 2014-10-28 16:07:48.0  
Last Updated: 2014-10-28 16:08:37.0  
-----



## Data Set List

Title	Project	Author	Funding	Progress
<a href="#">Grebmeier All station benthic and sediment files-multiple years</a>	PacMARS	jackie (Jacqueline M. Grebmeier)	NPRB	in work
<a href="#">Macrobenthic data from the Chukchi Sea</a>	PacMARS	alblanchard (Arny L. Blanchard)	NOAA	complete
<a href="#">Environmental data for Macrobenthic sampling stations in the Chukchi Sea</a>	PacMARS	alblanchard (Arny L. Blanchard)	NOAA	complete
<a href="#">Macrobenthic data from Neashore Prudhoe Bay</a>	PacMARS	alblanchard (Arny L. Blanchard)	Other	complete
<a href="#">Environmental data for Macrobenthic sampling stations in Prudhoe Bay, Beaufort Sea 1974</a>	PacMARS	alblanchard (Arny L. Blanchard)	Other	complete
<a href="#">Macrobenthic data from Bering to Chukchi Sea 1970 to 1974</a>	PacMARS	alblanchard (Arny L. Blanchard)	Other	complete
<a href="#">Test dataset #1 for checking out metadata creation [Foo Bar]</a>	Sandbox	foobar2 (Foo Test Bar 2)	NSF 99999	in work
<a href="#">Another test dataset</a>	Sandbox	foobar2 (Foo Test Bar 2)	NASA 89986	complete
<a href="#">Walrus Monthly Foraging Utilization Distribution in the Chukchi Sea: June - November</a>	PacMARS	afischbach (Anthony Fischbach)	Other USGS Changing Arctic Ecosystems	complete
<a href="#">CTD Summary Data</a>	PacMARS	okkonen (Stephen R. Okkonen)	Other	complete
<a href="#">Testing Cat/Plat Bug</a>	Sandbox	foobar2 (Foo Test Bar 2)	NSF	in work
<a href="#">Chukchi Sea Offshore Monitoring in Drilling Area (COMIDA): Chemical and Benthos (CAB)</a>	PacMARS	twhit (Timothy L. Whiteaker)	Other M08PC20056	complete
<a href="#">Dikeba et al. IY2500 - macrofauna - Canada Basin 2005</a>	PacMARS	hahlikov (Radka)	NOAA NA16DP0007	complete



## *Find, Download and Contribute Arctic Science Data*

### Find and Download

#### Browse

- [Principal Investigators](#)
- [Projects](#)
- [Geographically](#)

#### Science Keyword Topics

- [Agriculture](#)
- [Atmosphere](#)
- [Biological Classification](#)
- [Biosphere](#)
- [Climate Indicators](#)
- [Cryosphere](#)
- [Human Dimensions](#)
- [Land Surface](#)
- [Oceans](#)
- [Paleoclimate](#)
- [Solid Earth](#)
- [Terrestrial Hydrosphere](#)

#### Additional Arctic Data Resources

- [Arctic Data Explorer](#)

### Contribute Data

[How to Contribute](#)

[Register](#)

[Login](#)

[Start Contributing Now](#)

[Submit Publications Using ACADIS Data](#)

### Information

[Recent Dataset Updates](#) 

[OAI-PMH](#)

[Data Management Plan Template \(docx\)](#)

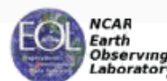
[Documentation Template \(docx\)](#)

[Contact Us](#)

[About Us](#)

[Publications](#)

[Rosetta Data Format Translation Tool Demo](#)





Don Stott, stott@ucar.edu  
James Moore, jmoore@ucar.edu

<https://data.eol.ucar.edu/metaarch/register>

Thank You!

