

Distributed Biological Observatory (DBO)

Linking Physics & Biology in the Arctic

The Distributed Biological Observatory (DBO): Lower trophic data collections 2010-2014

Lower trophic level group: Cho, Eisner, Varela, Ashjian,
Hopcroft, Nelson, Blanchard, Grebmeier

Chesapeake Biological Laboratory

University of Maryland Center for Environmental Science, Solomons, MD, USA

2nd DBO Data Workshop

October 29-31, 2014

PMEL/NOAA

Seattle, Washington, USA



The Distributed Biological Observatory (DBO): Lower trophic data collections 2010-2014

Jacqueline M. Grebmeier

Chesapeake Biological Laboratory

University of Maryland Center for Environmental Science, Solomons, MD, USA

2nd DBO Data Workshop

October 29-31, 2014

PMEL/NOAA

Seattle, Washington, USA



A Climatology of the DBO Sites

Sea Surface Temperature (AVHRR)

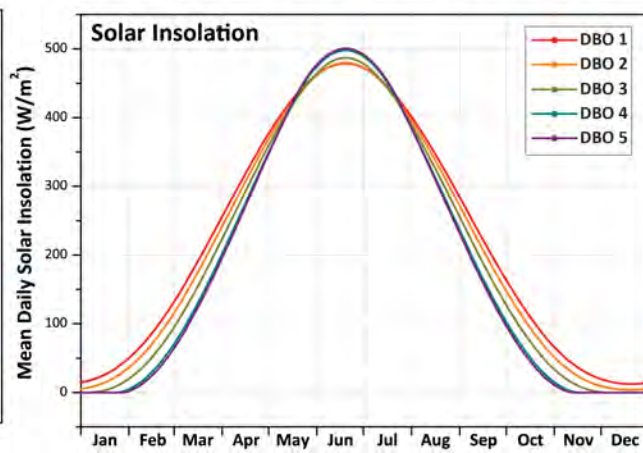
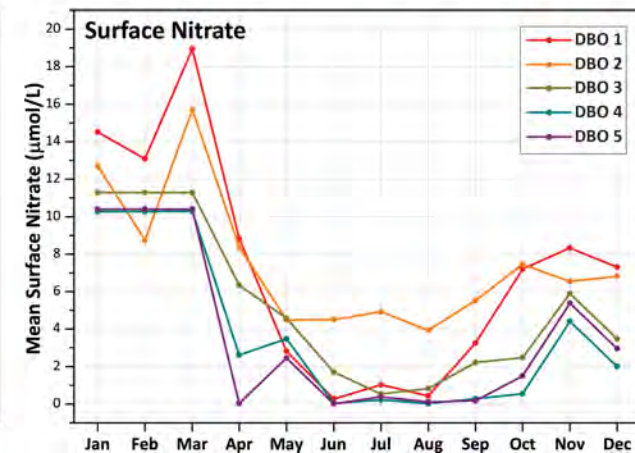
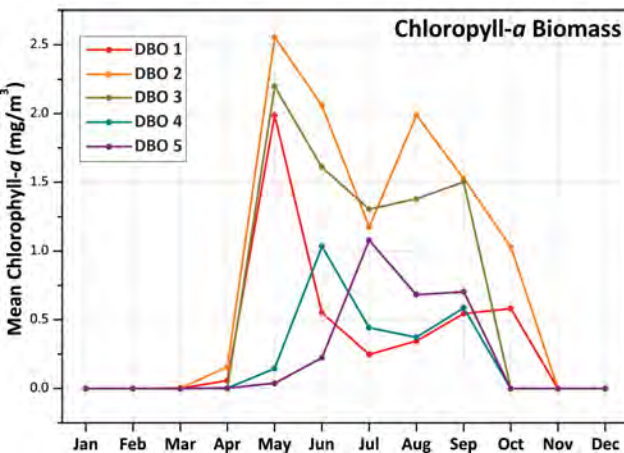
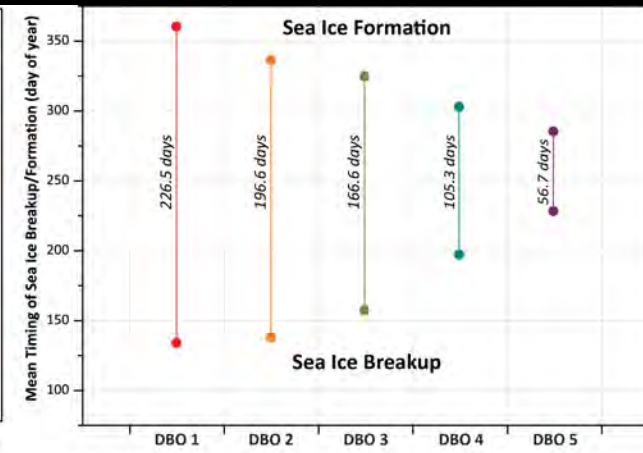
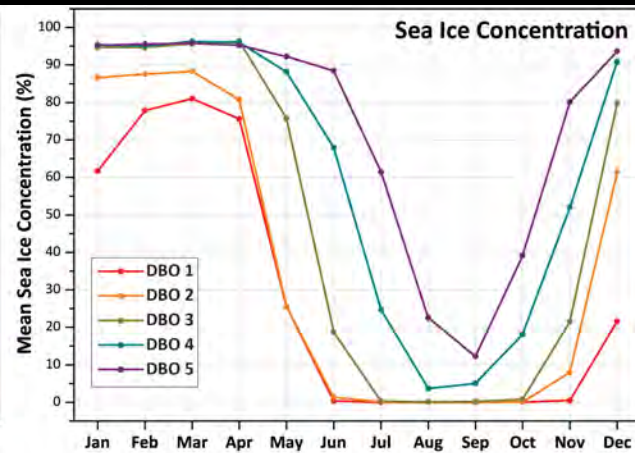
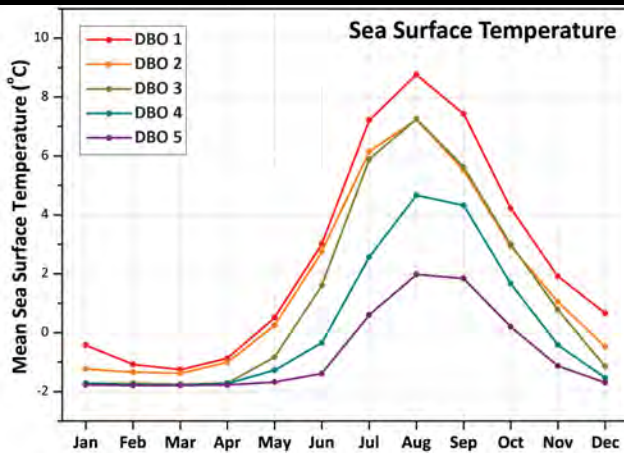
Sea Ice Concentration (SMMR/SSMI)

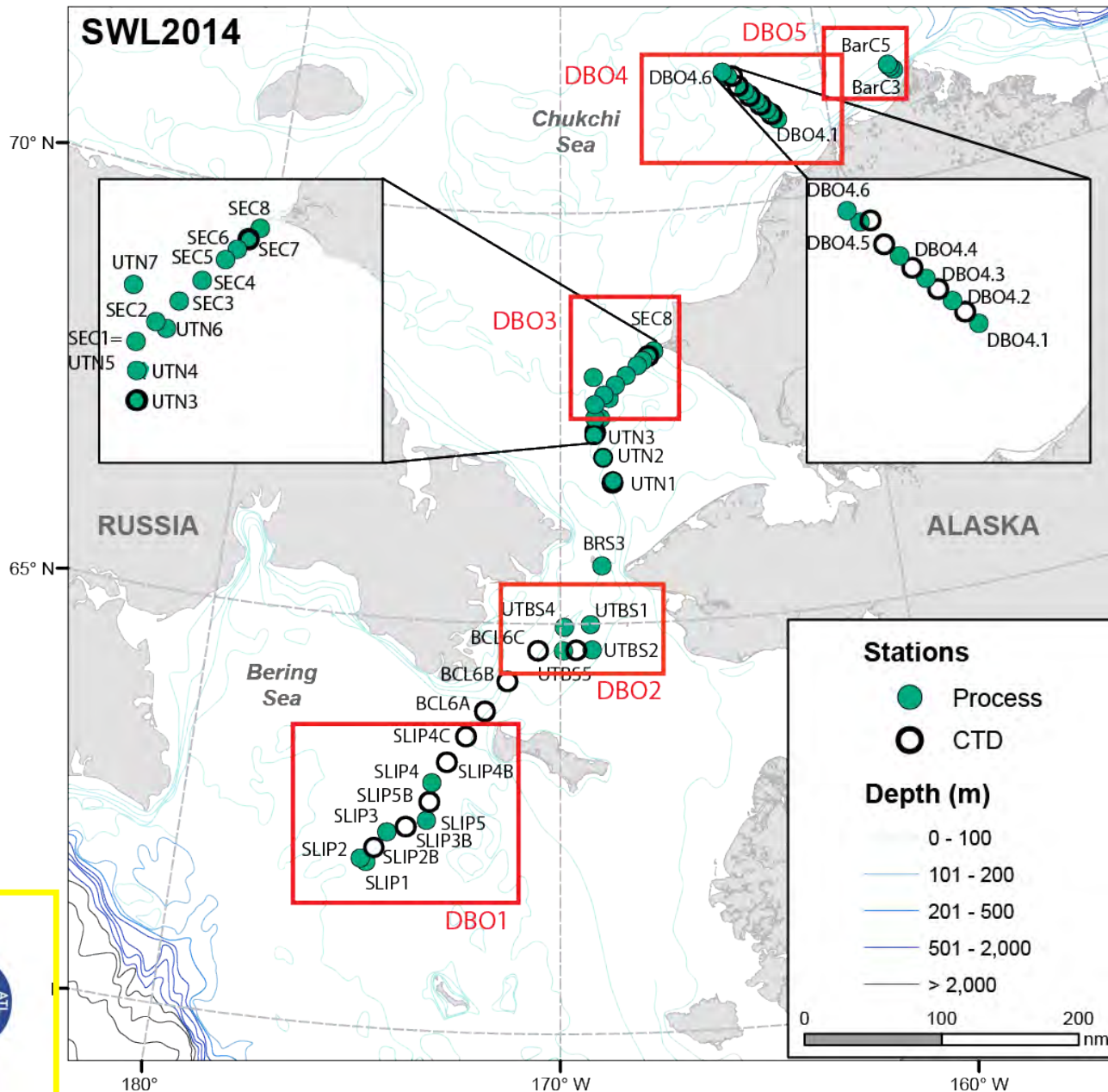
Sea Ice Breakup/Formation Timing (SMMR/SSMI)

Chlorophyll-*a* Biomass (Globcolour)

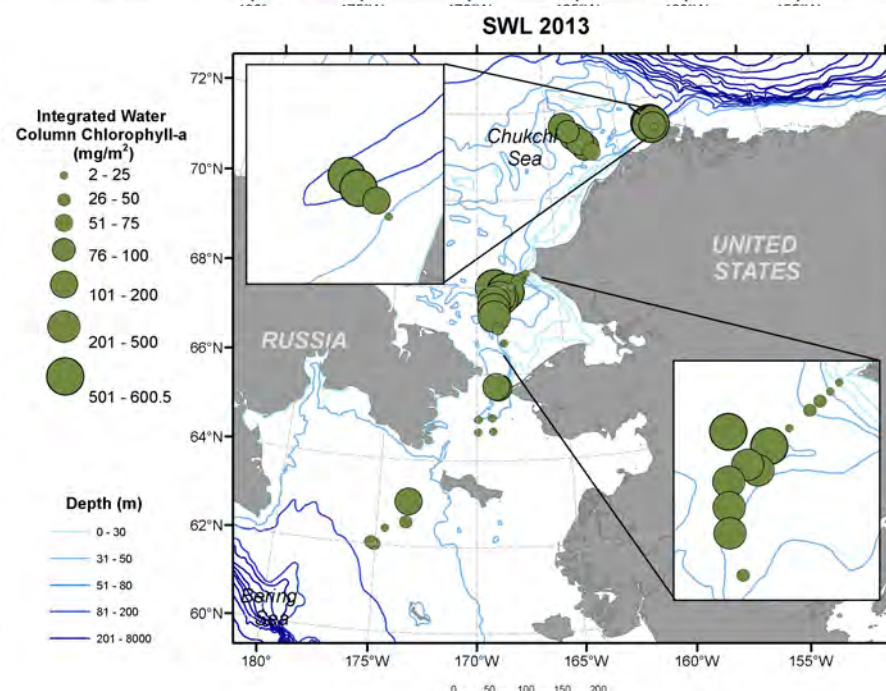
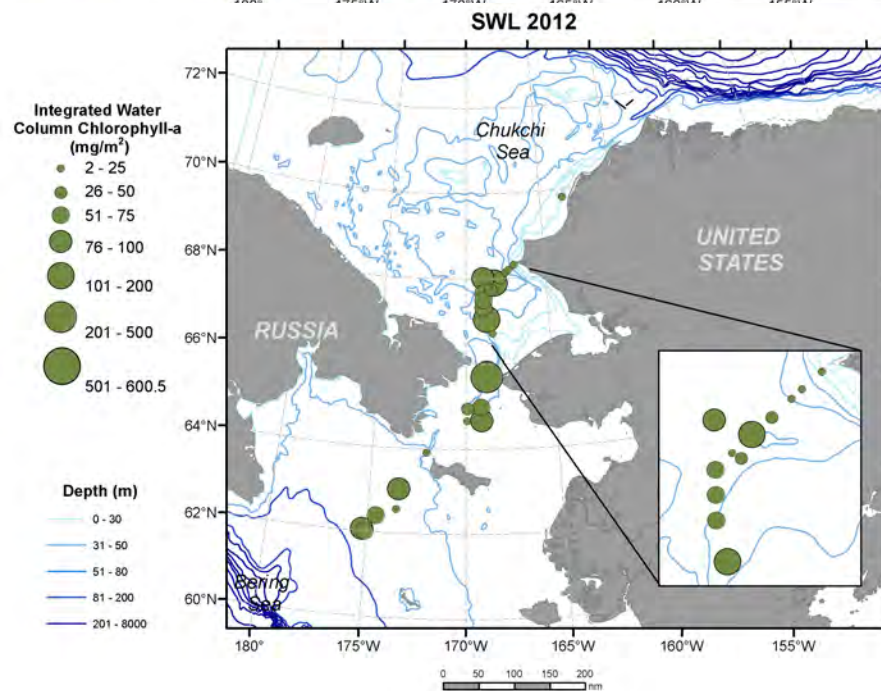
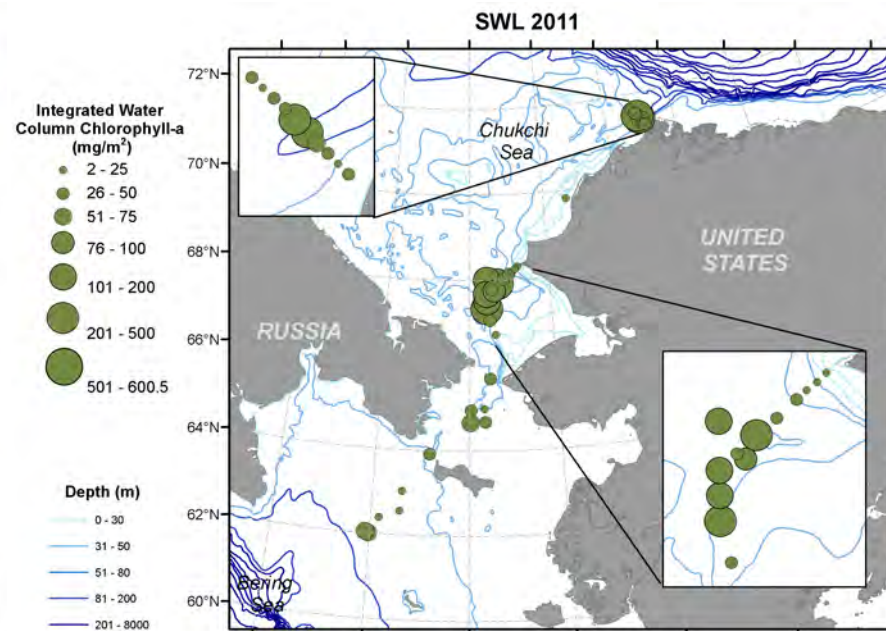
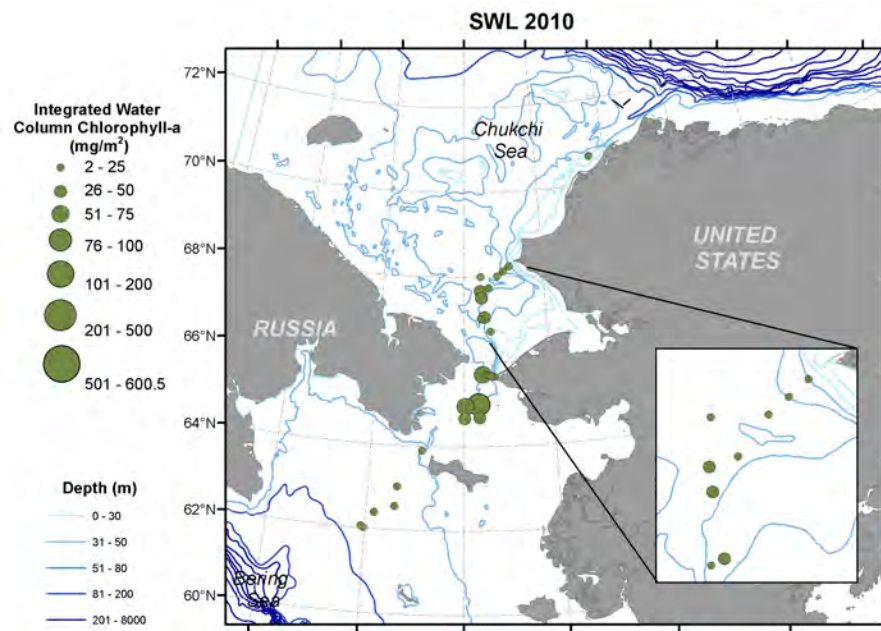
Surface Nitrate (World Ocean Atlas)

Solar Insolation (NASA)

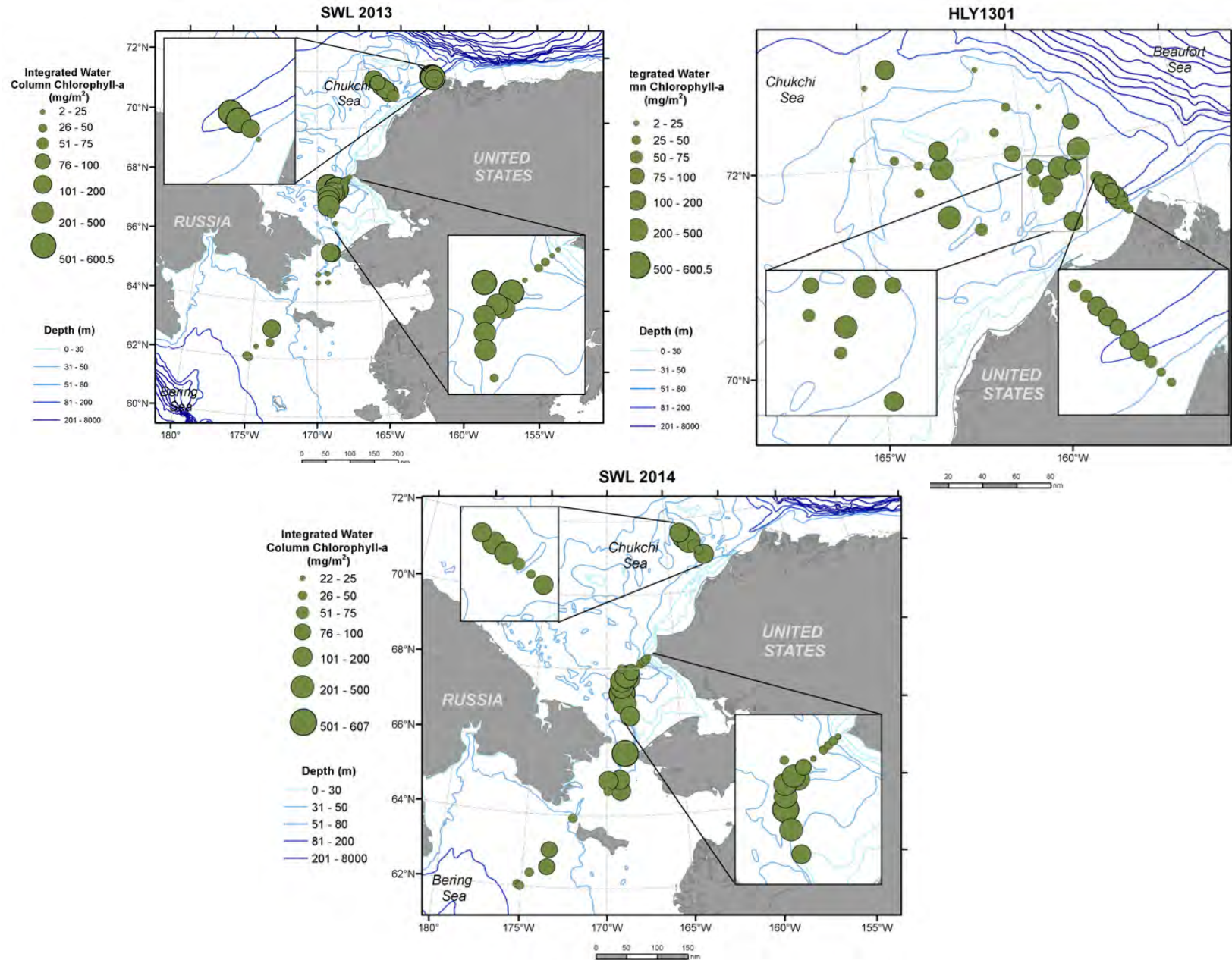




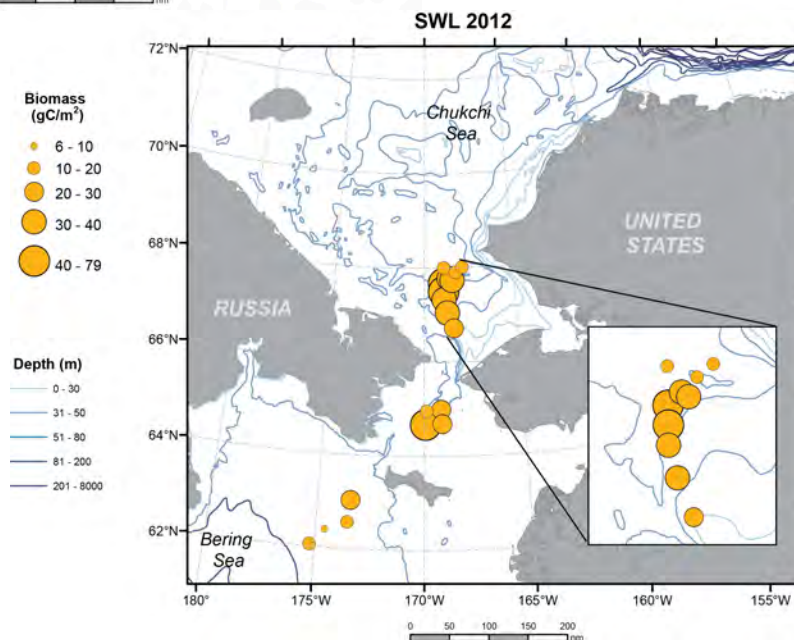
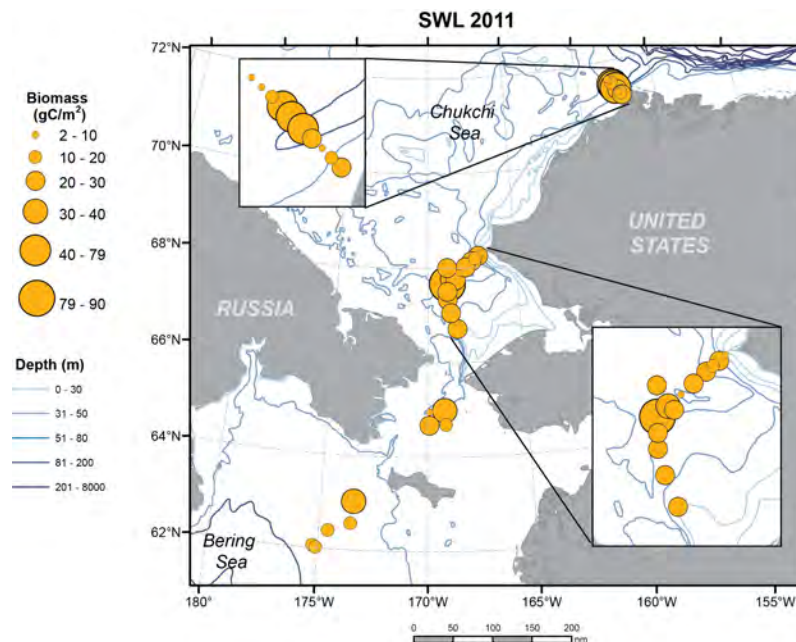
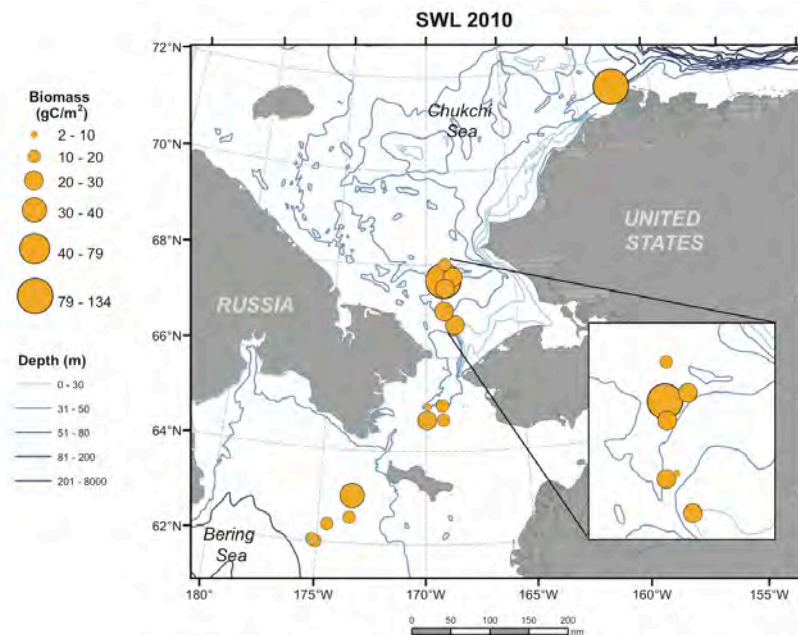
DBO Integrated Chlorophyll a (mg/m²) during July



Integrated Chl a 2013 July and August and 2014 July



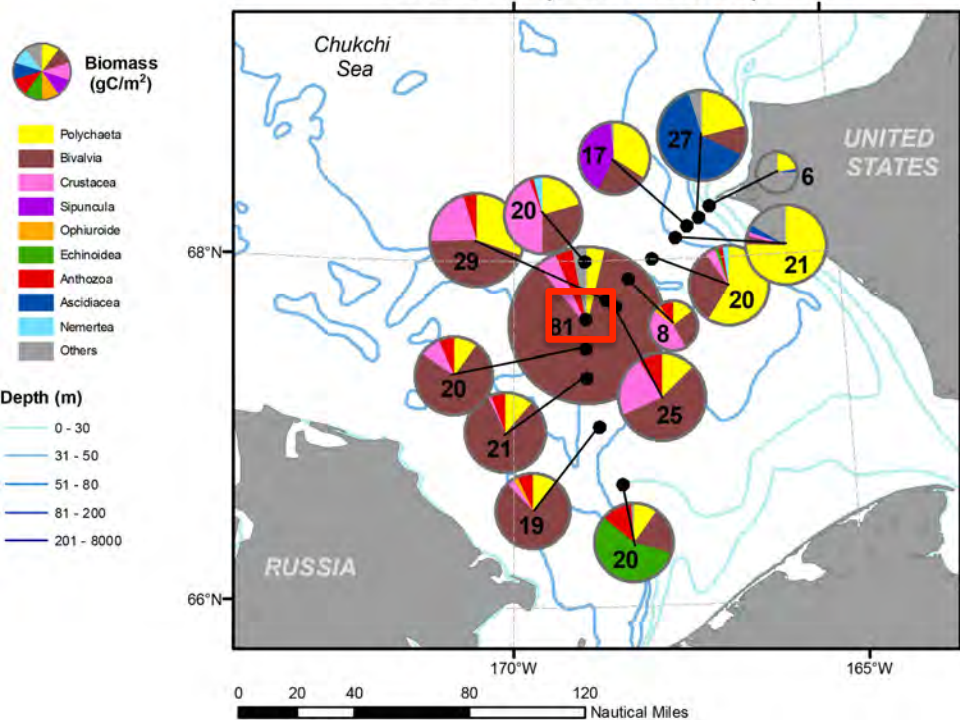
Distribution of macroinfaunal biomass (gC/m²) 2010-2012



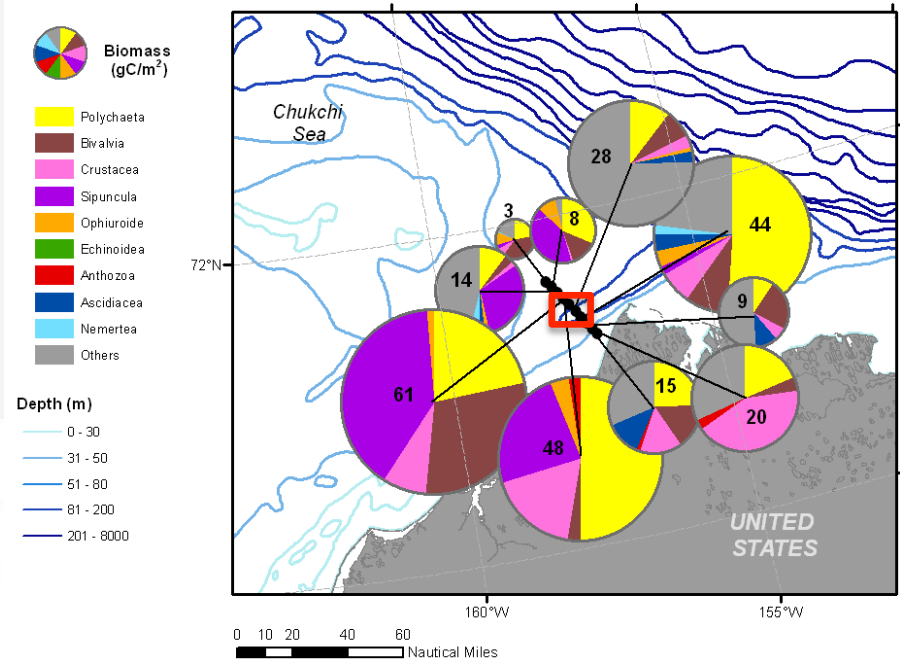
DBO Chukchi Sea Benthic macroinfaunal biomass- July 2011



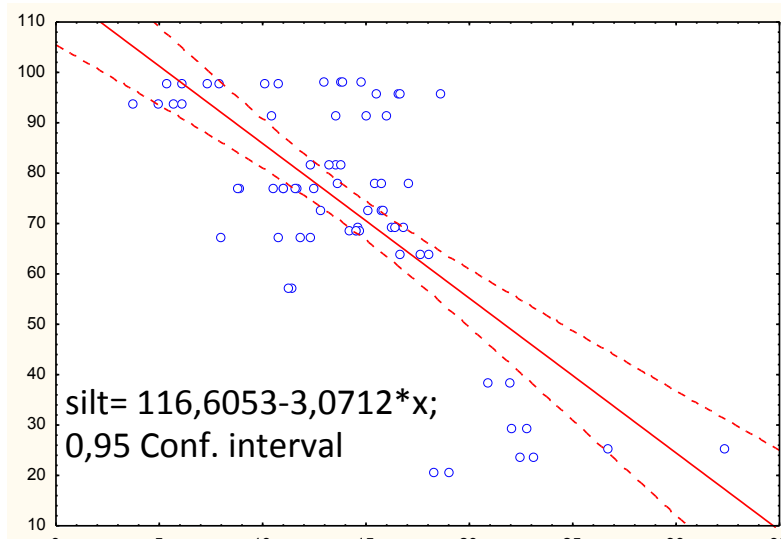
SWL 2011 (DB03 = 13-26)



SWL 2011 = DB05

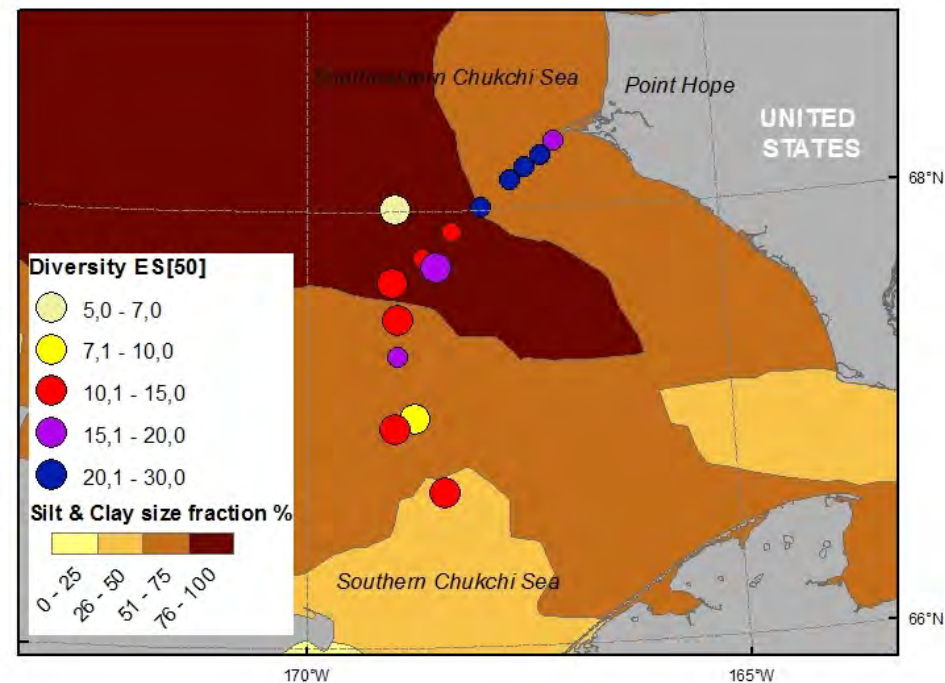
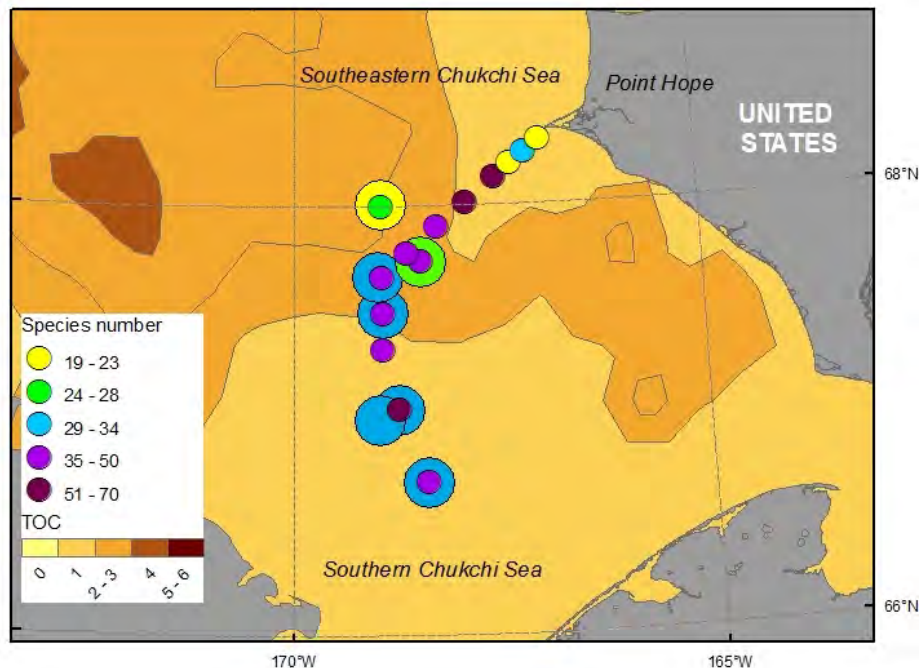


Southern and southeastern Chukchi Sea-2011 C30

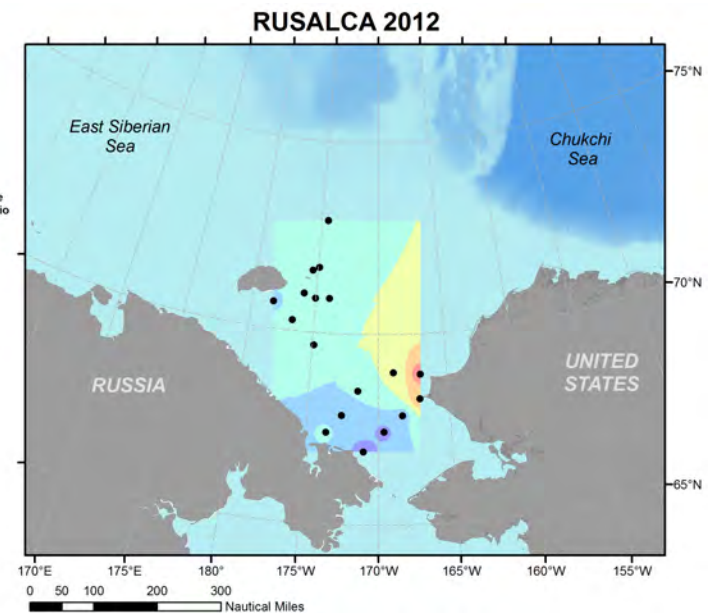
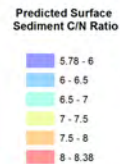
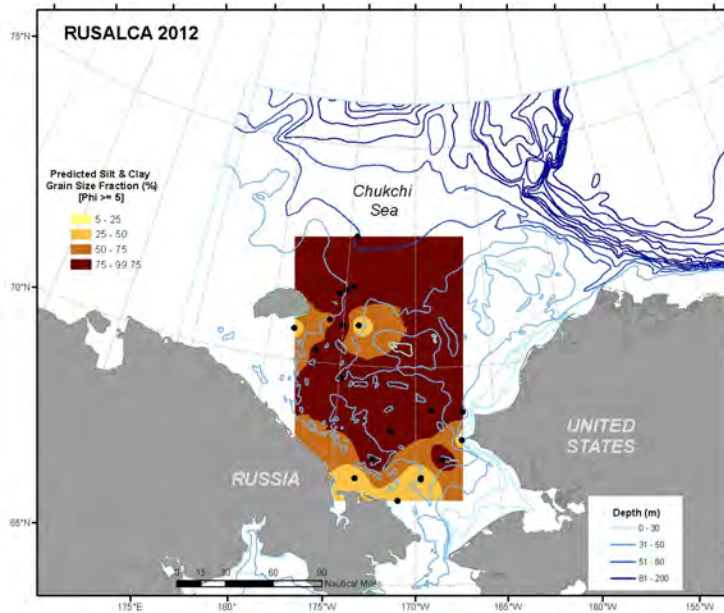
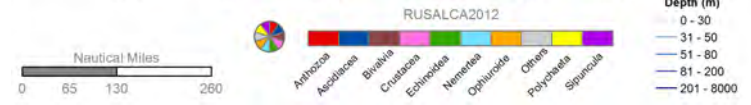
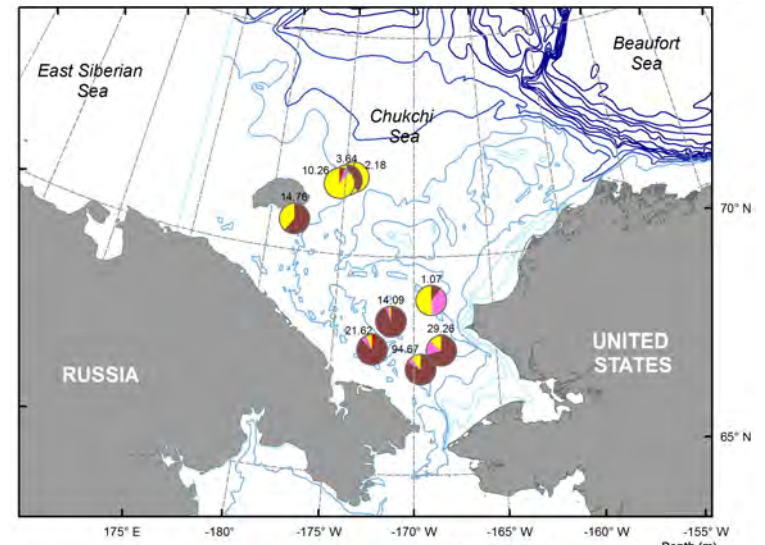
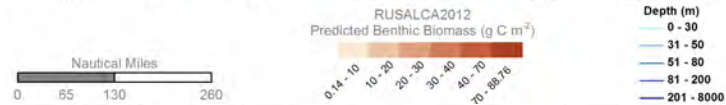
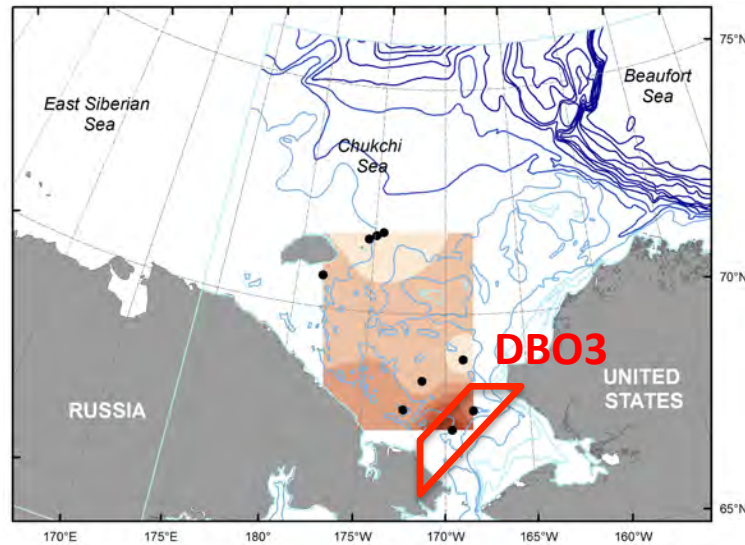


Spearman correlations:
 Diversity & coarse sand/gravel: 0.51*
 Diversity & fine sand: 0.47*
 Diversity & silt: -0.52*
 Diversity & TOC : -0.57*

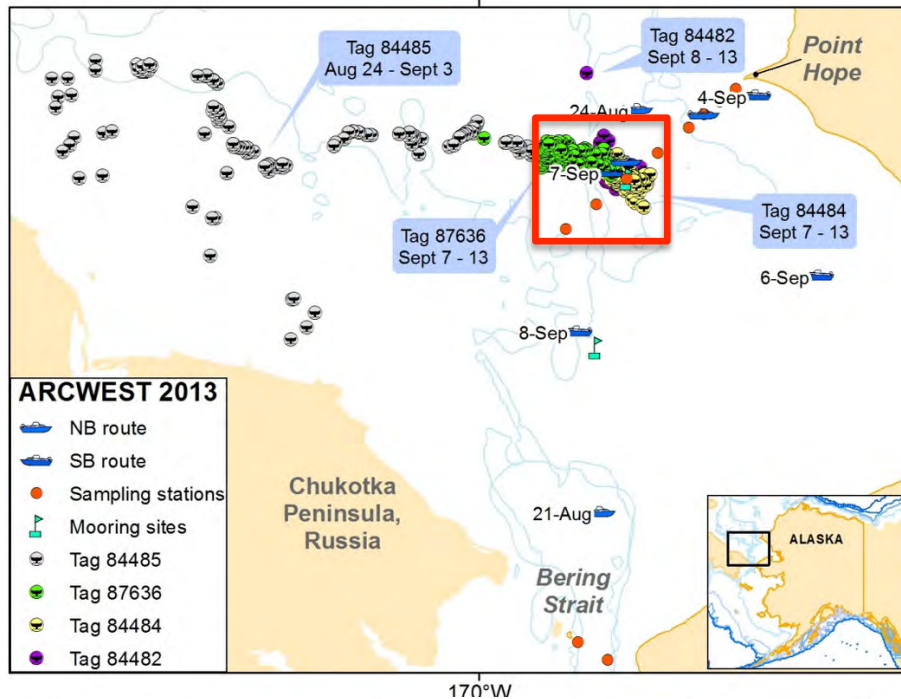
[Monika Kedra, CBL]



Benthic data for RUSALCA12



Tagged gray whales and benthic crustaceans-SE Chukchi Sea



- Tagged gray whales in DBO SE Chukchi Sea hotspot; then moved westwards
- Benthic crustaceans highest abundance and biomass in hotspot and SW off Russian coast, lower westward

