

DBO

Northern Barents Sea ?

lis.lindal.joergensen@imr.no

Institute of Marine Research
Tromsø, Norway

2nd DBO Data Workshop

29-31 Oct 2014

NOAA/Pacific Marine Environmental Laboratory in Seattle, Washington, USA



**I send you all greetings from my new
Barents Sea Program leader**



**I send you all greetings from my new
Barents sea Program leader**



This man do more
than “commercial
fish stocks” !!!!!



IMR is a governmental institution



Bergen: the IMR headquarters. Offices and laboratories in several buildings at Nordnes



Holmfjord in the Porsanger fjord



TROMSØ DEPARTMENT



MAIRE RESEARCH STATION



AUSTEVOLL RESEARCH STATION



FLØDEVIGEN RESEARCH STATION



Parisvalnet in Øygarden



Guddalselva in Kvinnherad

Office Trondheim

Office Oslo

Staff of ~ 750



More than 2000 vessel days at sea

Main goal

- **Scientifically explore** the environment and the biology of the all 4 Norwegian seas and the coasts
- Give **advice** to the Ministry of Fisheries and Coastal Affairs, the Food Safety Authority, the fishing industry and other stakeholders regarding management of the ocean and coast's **biological resources and environment**
- Communicate the **research** results
- Develop **technology** for fisheries and catching



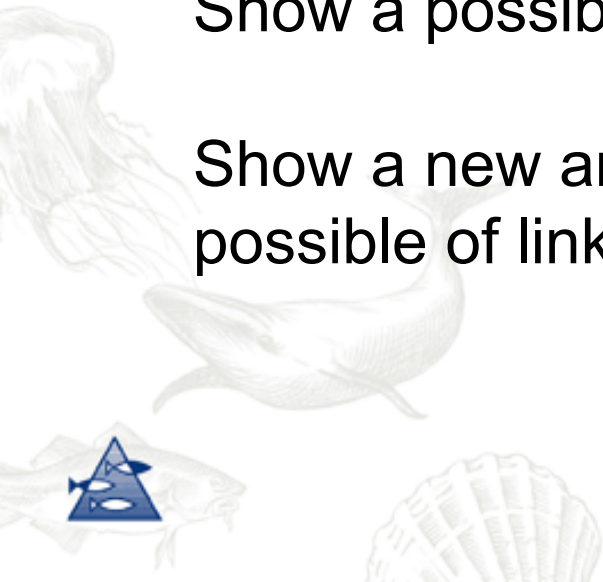
Goal of this speech

Inform about existing Barents Sea Ecosystem survey exemplified with some selected metadata.

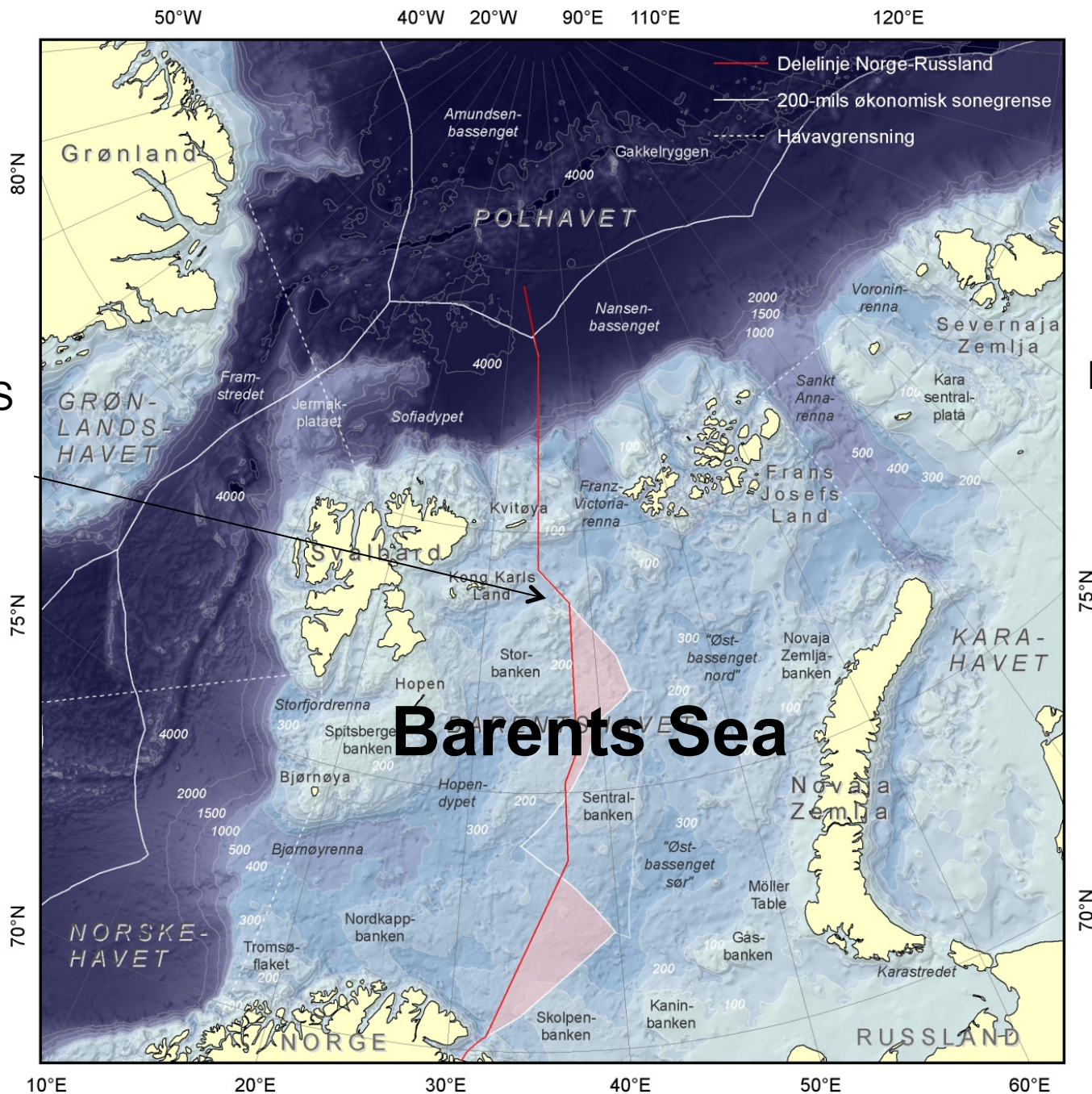
Other surveys in the **Barents Sea** and possible **partners** operating in same area

Show a possible position of a Barents Sea **DBO**

Show a new announcement for **post-doc position** possible of linking Norway and USA



Boundary splits the BS into a **NO** and a **RU** zone



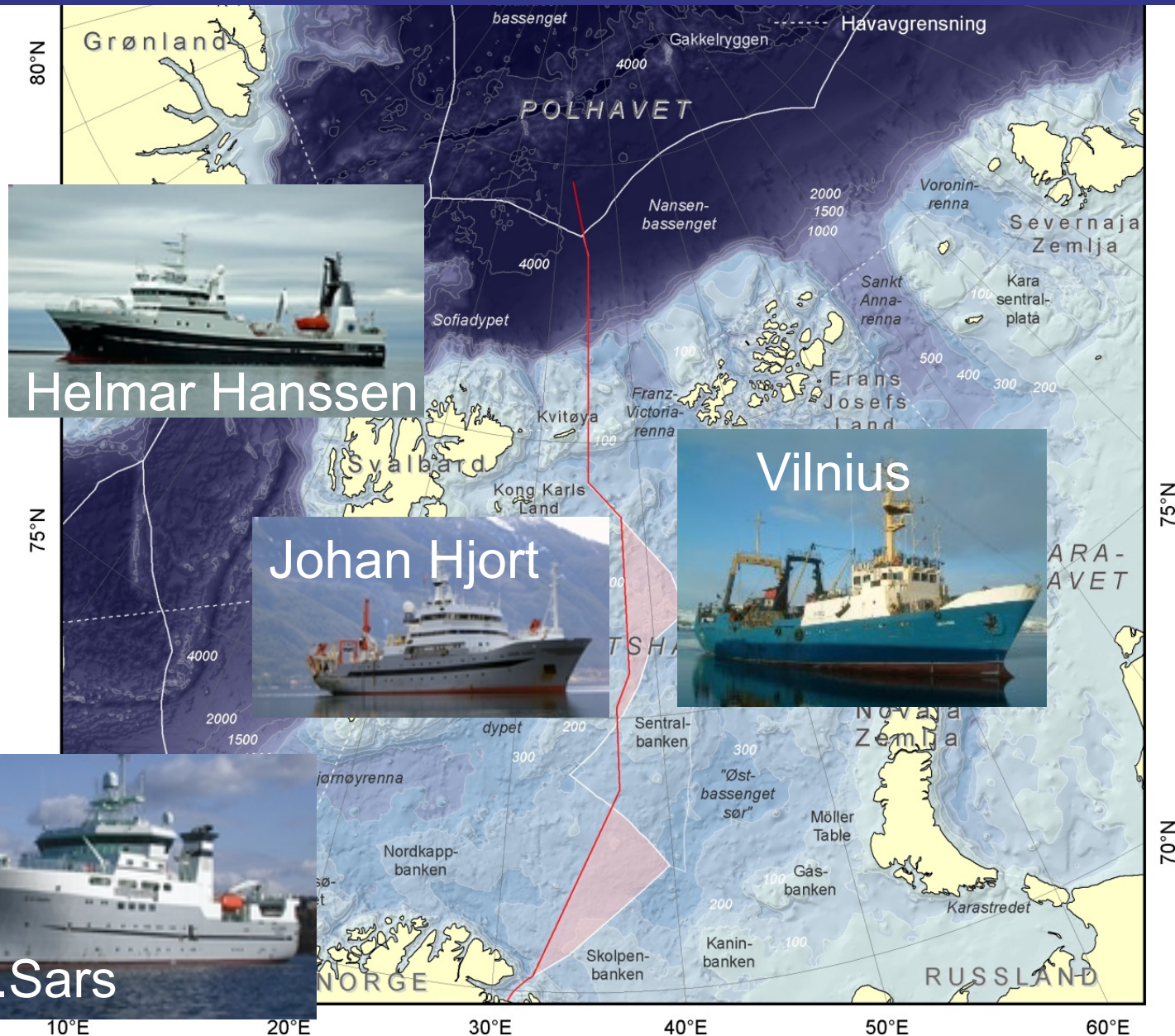
Mean depth:
230 m

Area:
1.4 mil.km²

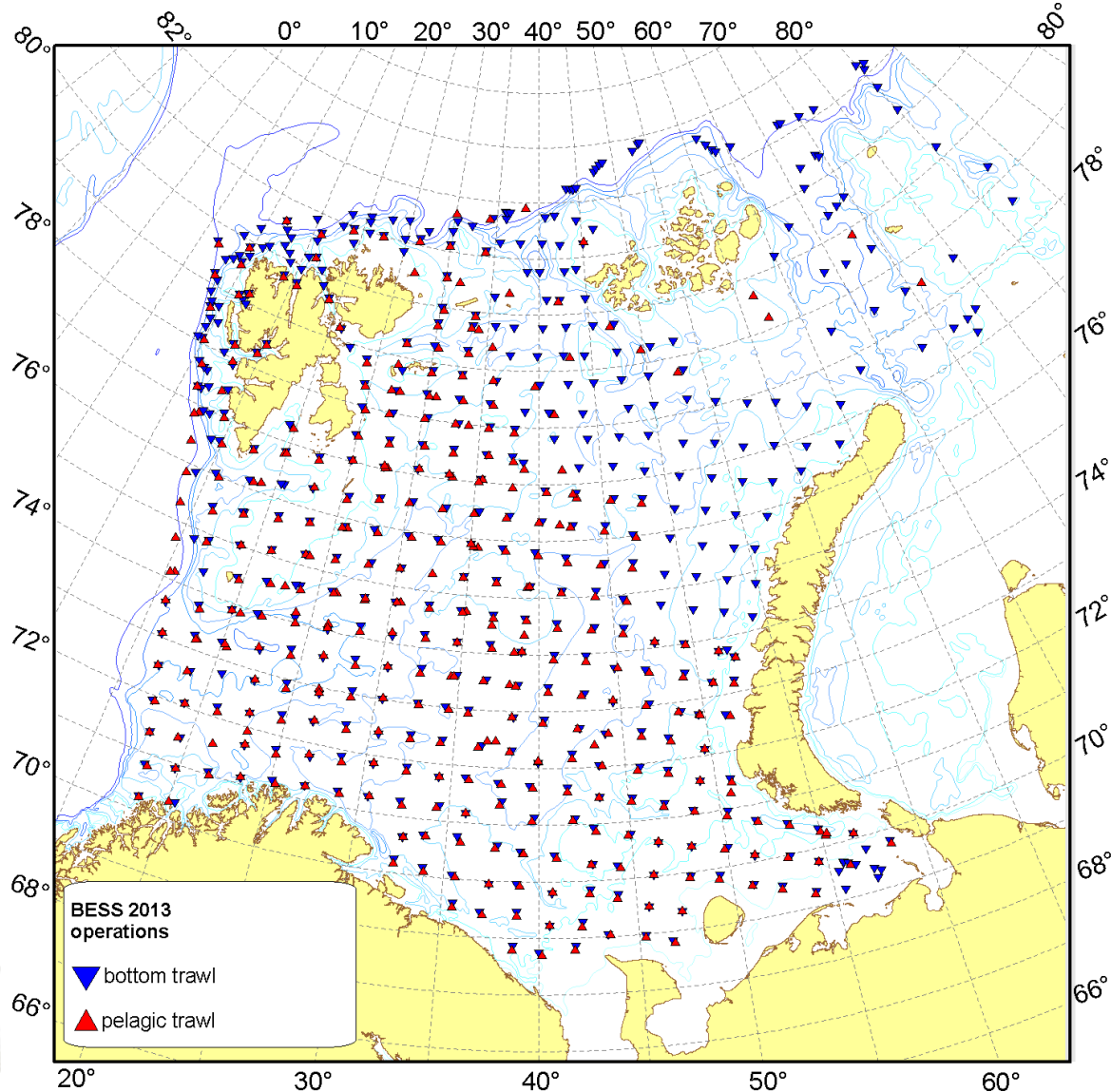
Barents Sea



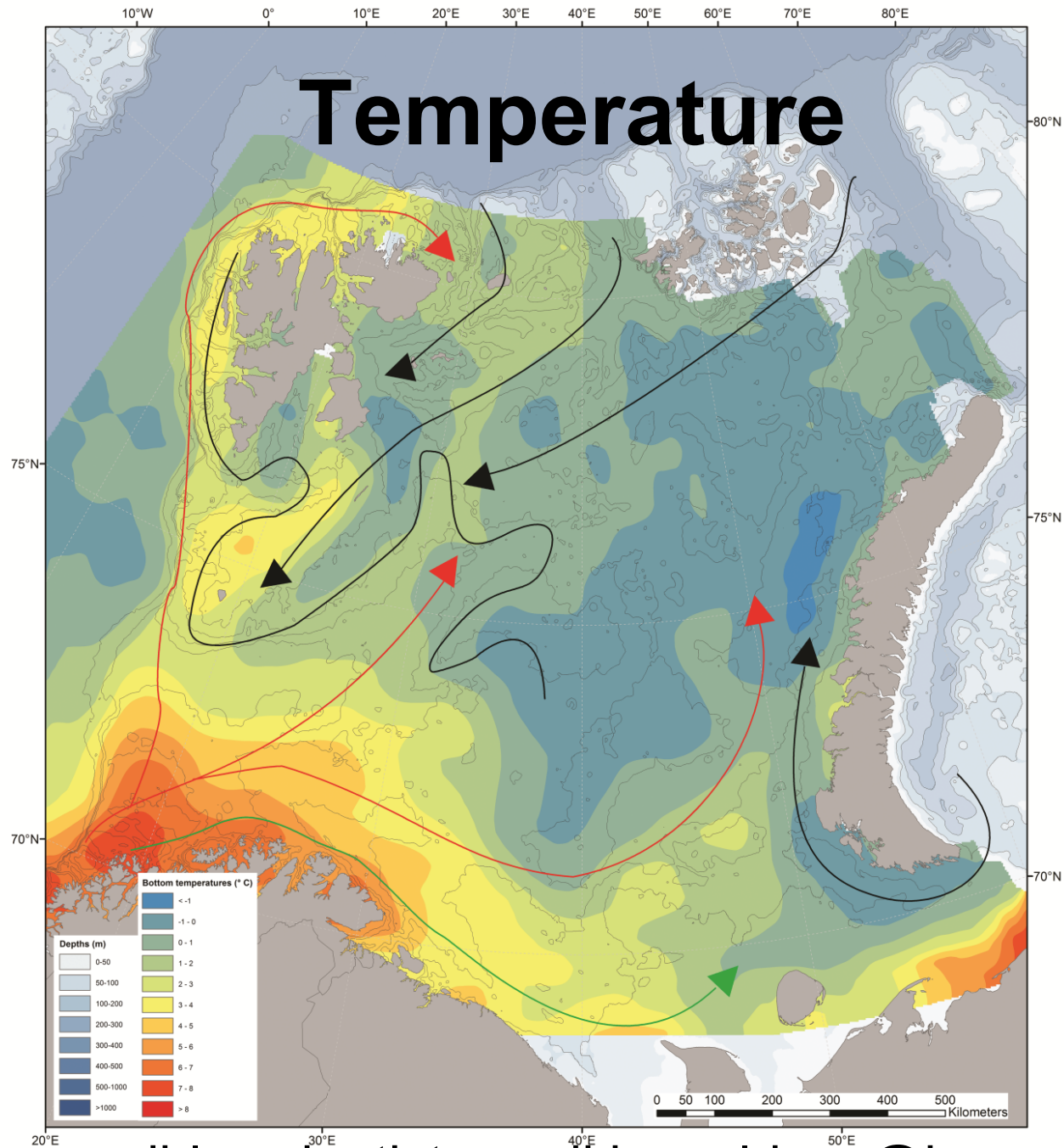
Joint annual Barents Sea Ecosystem survey



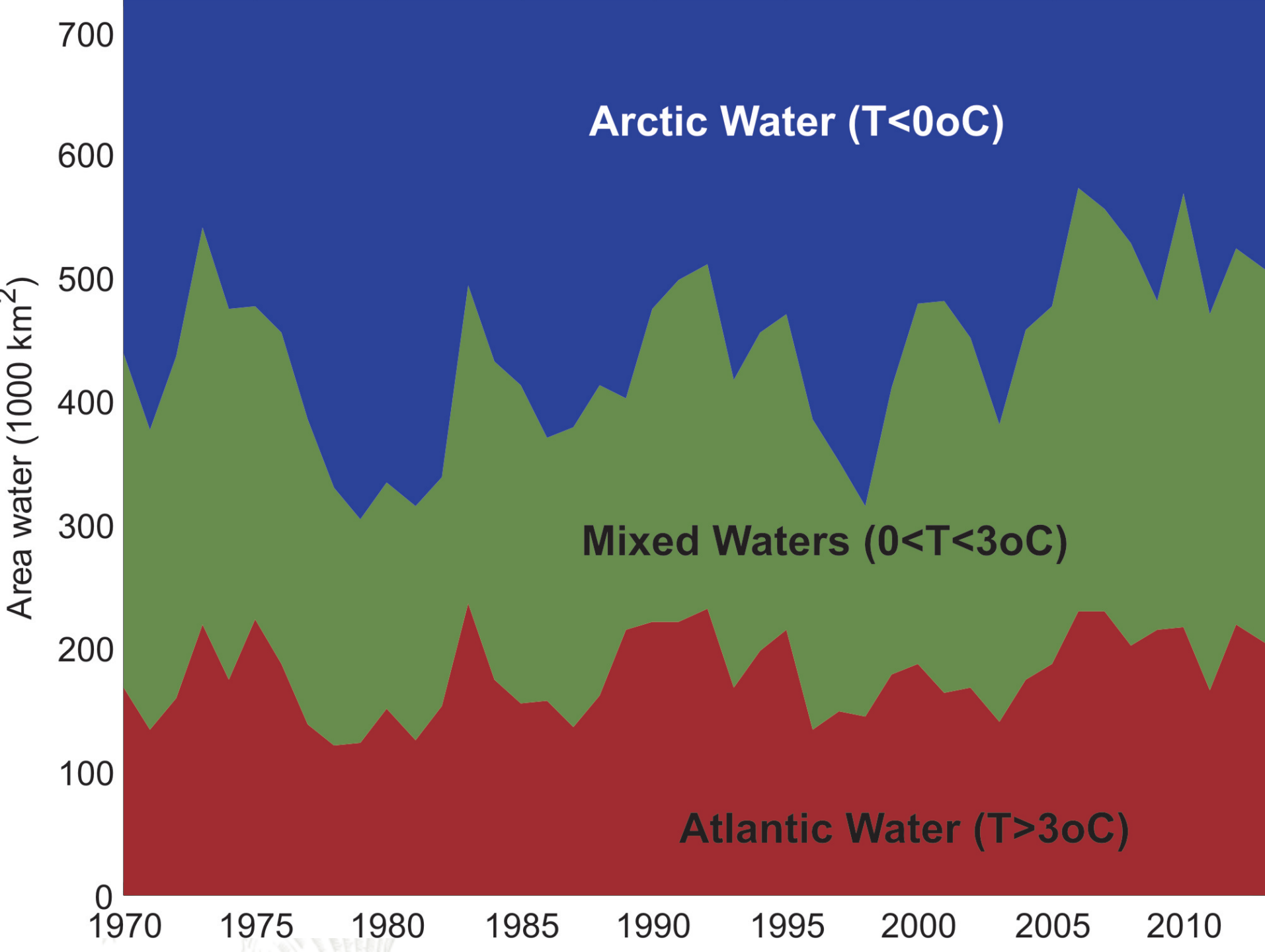
178 vessel days (2013)



<http://www.imr.no/forskning/forskningsdata/operasjonelledata/>

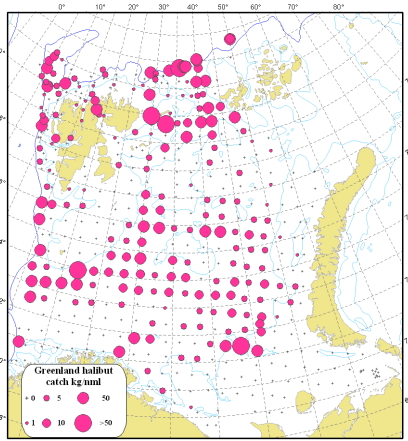


Responsible scientist: randi.ingvaldsen@imr.no

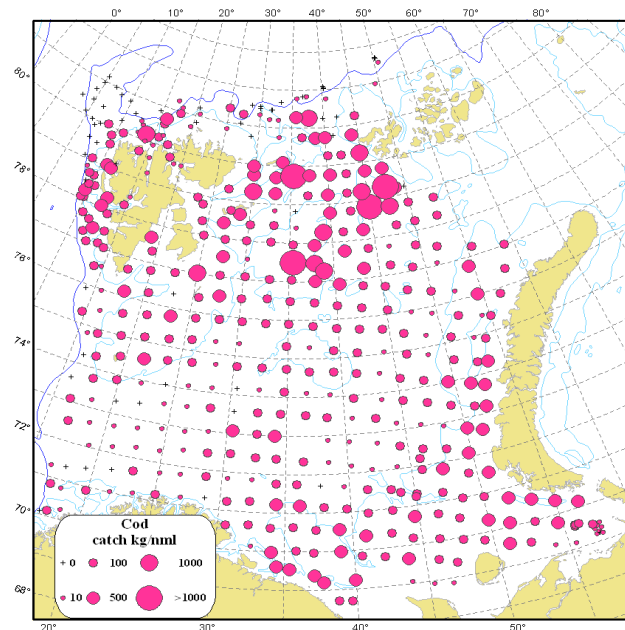


Commercial fish species migrate northward

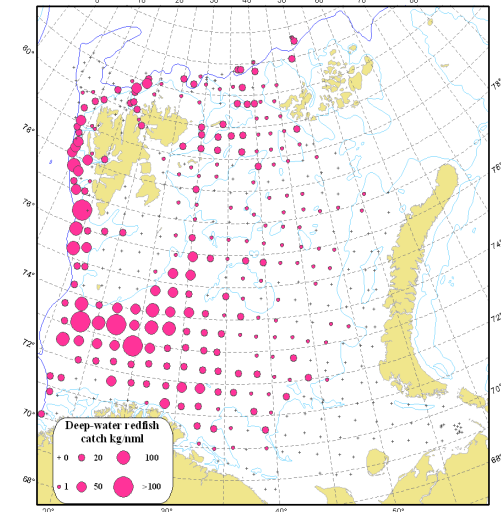
Greenland halibut (*Reinhardtius hippoglossoides*)



Cod (*Gadus morhua*)



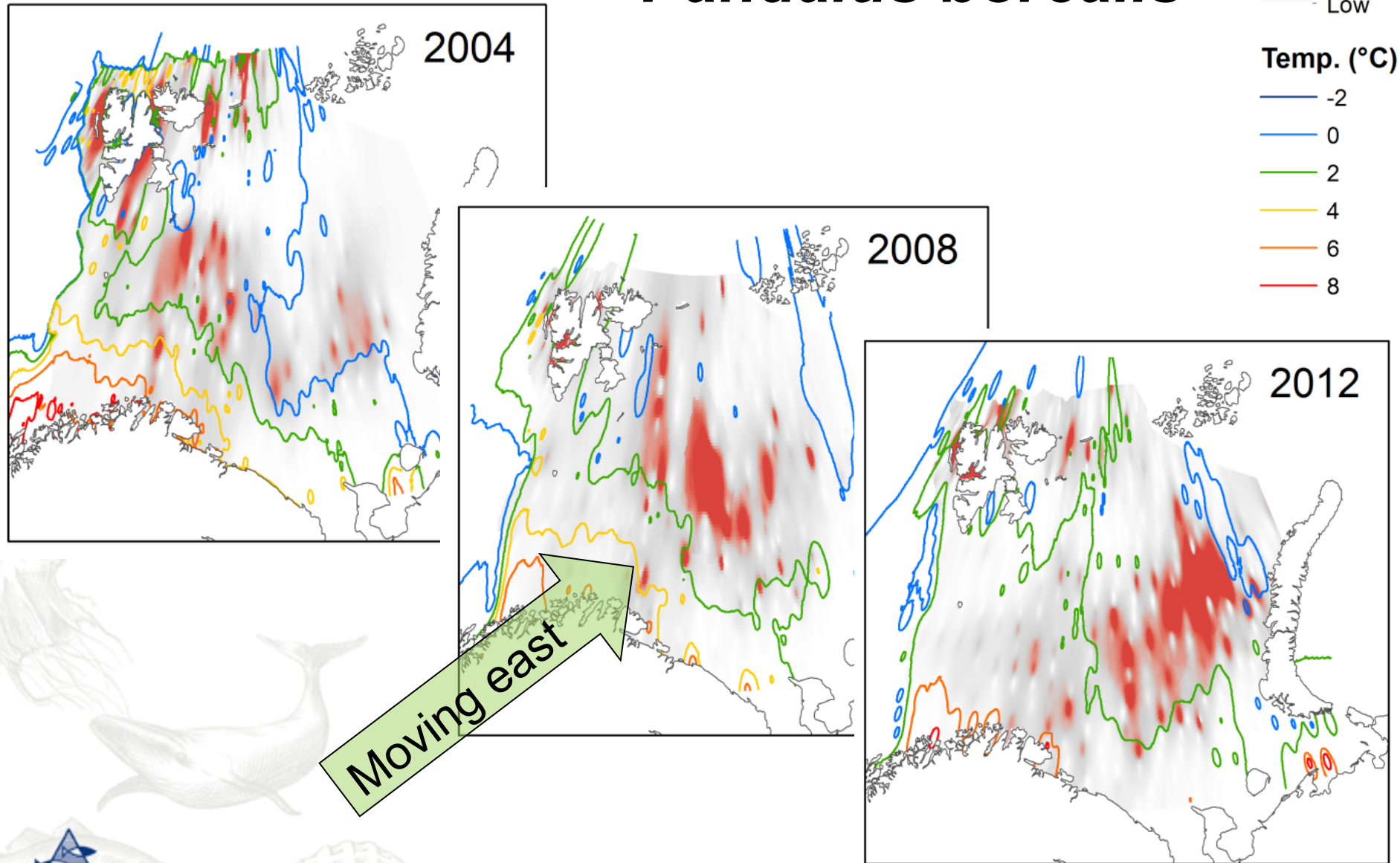
Deep-water redfish (*Sebastes mentella*)



Responsible scientist: harald@imr.no



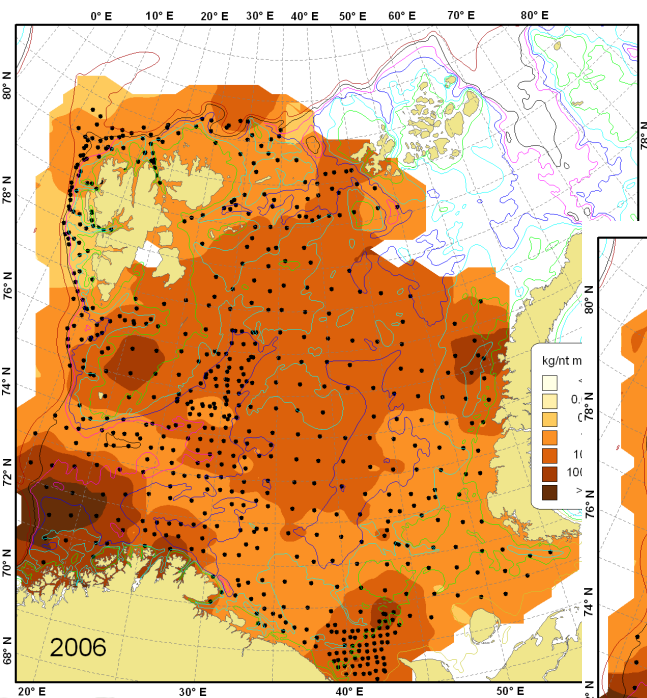
Commercial Deep sea prawn *Pandalus borealis*



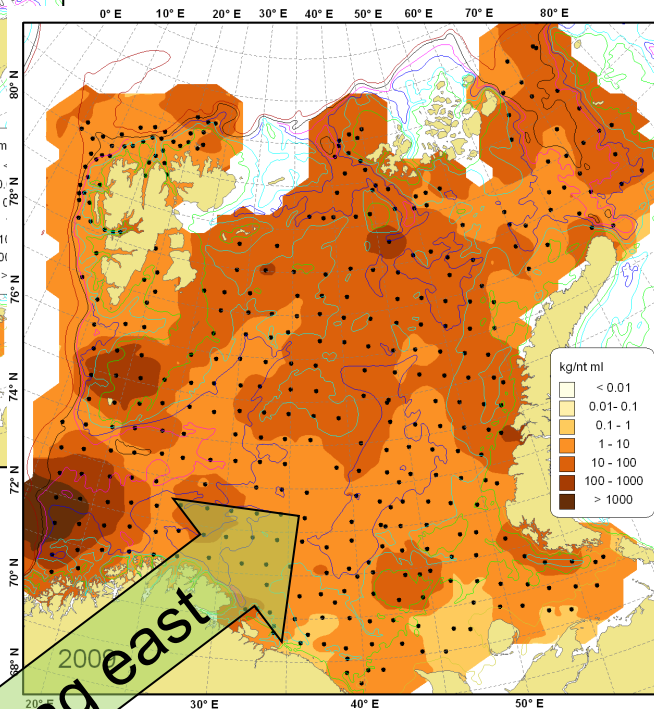
Responsible scientist: carsten.hvingel@imr.no

Benthic biomass

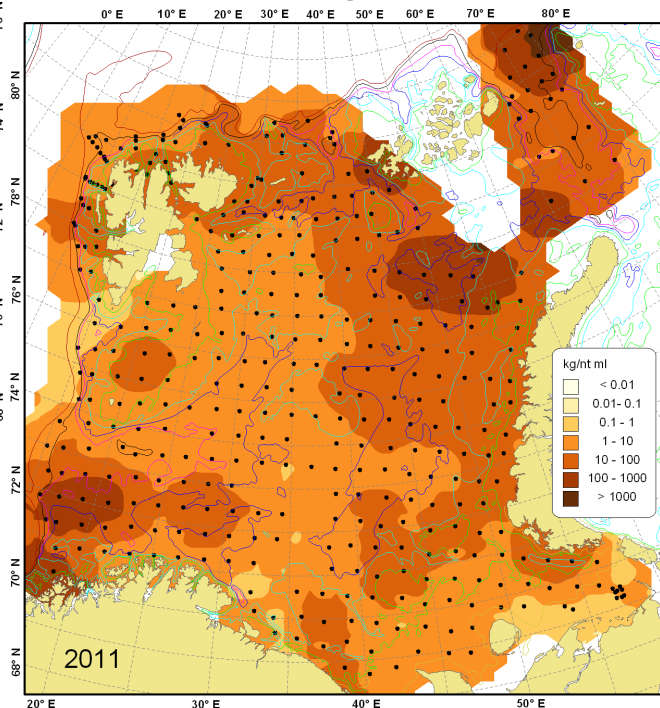
2006



2009



2011

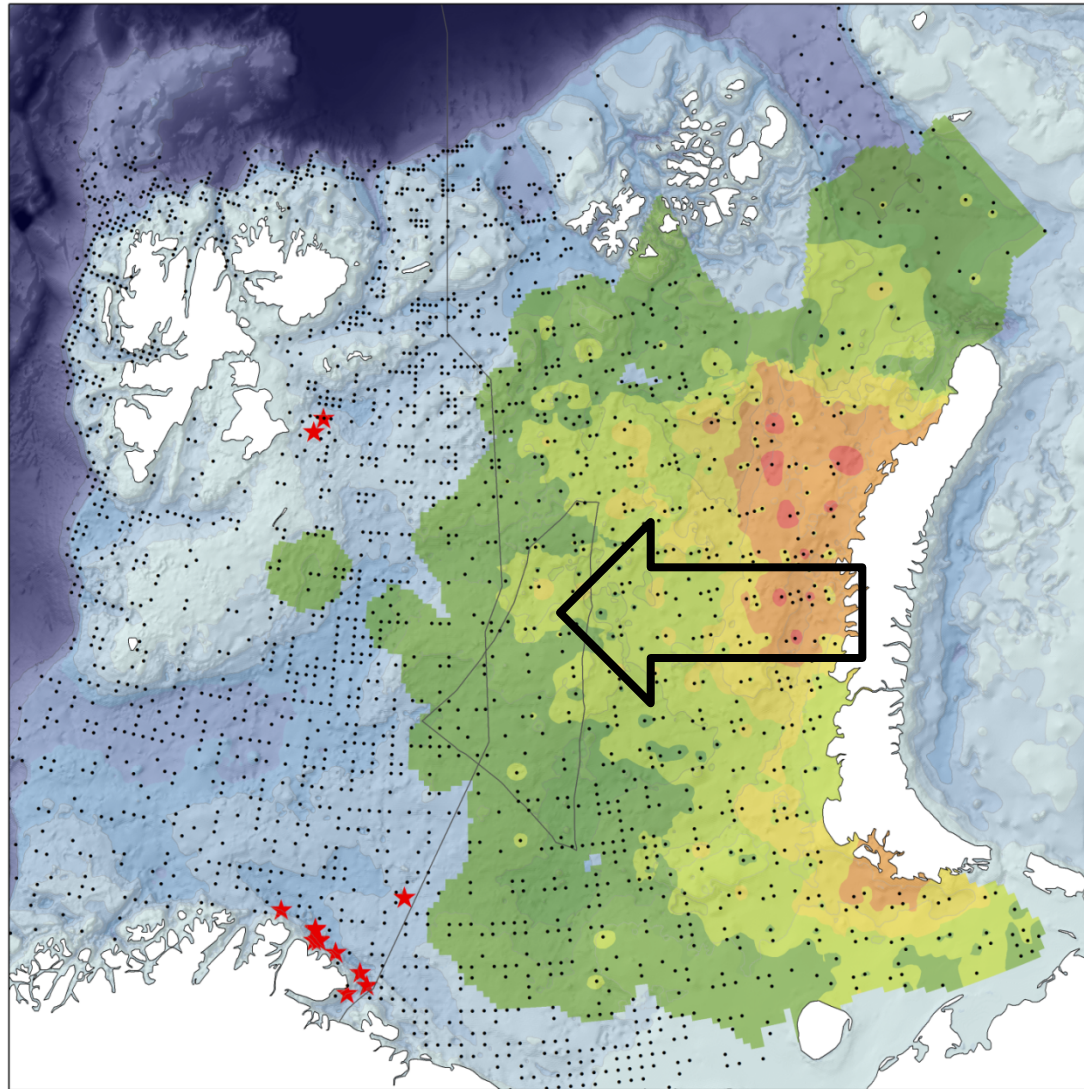


Moving east



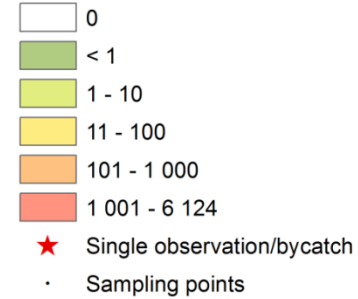
Responsible scientists: lis.lindal.joergensen@imr.no/plubin@pinro.ru

Snowcrab



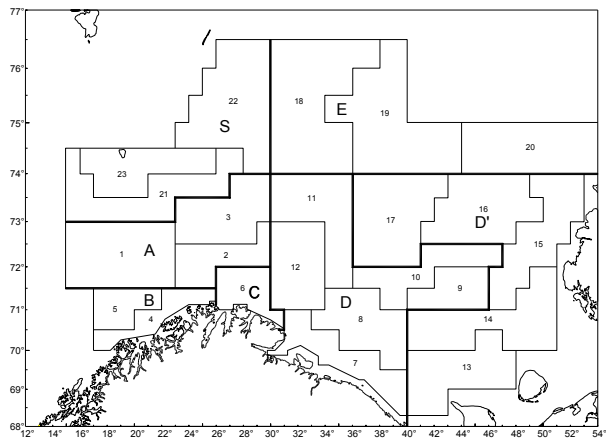
Distribution 2004-2012

Mean numbers per nm



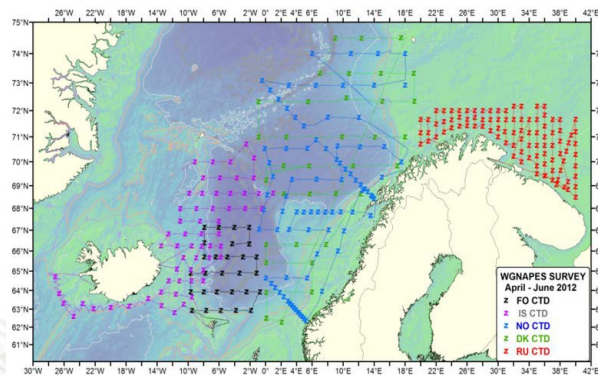
Responsible scientist: carsten.hvingel.imr.no

Other surveys in BS



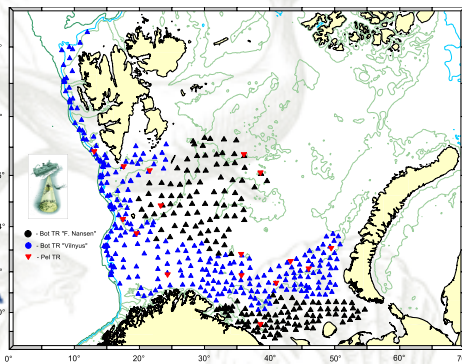
Joint NO-RU Winter survey

Fish



International summer survey

CTD, algae and zooplankton, Fish.

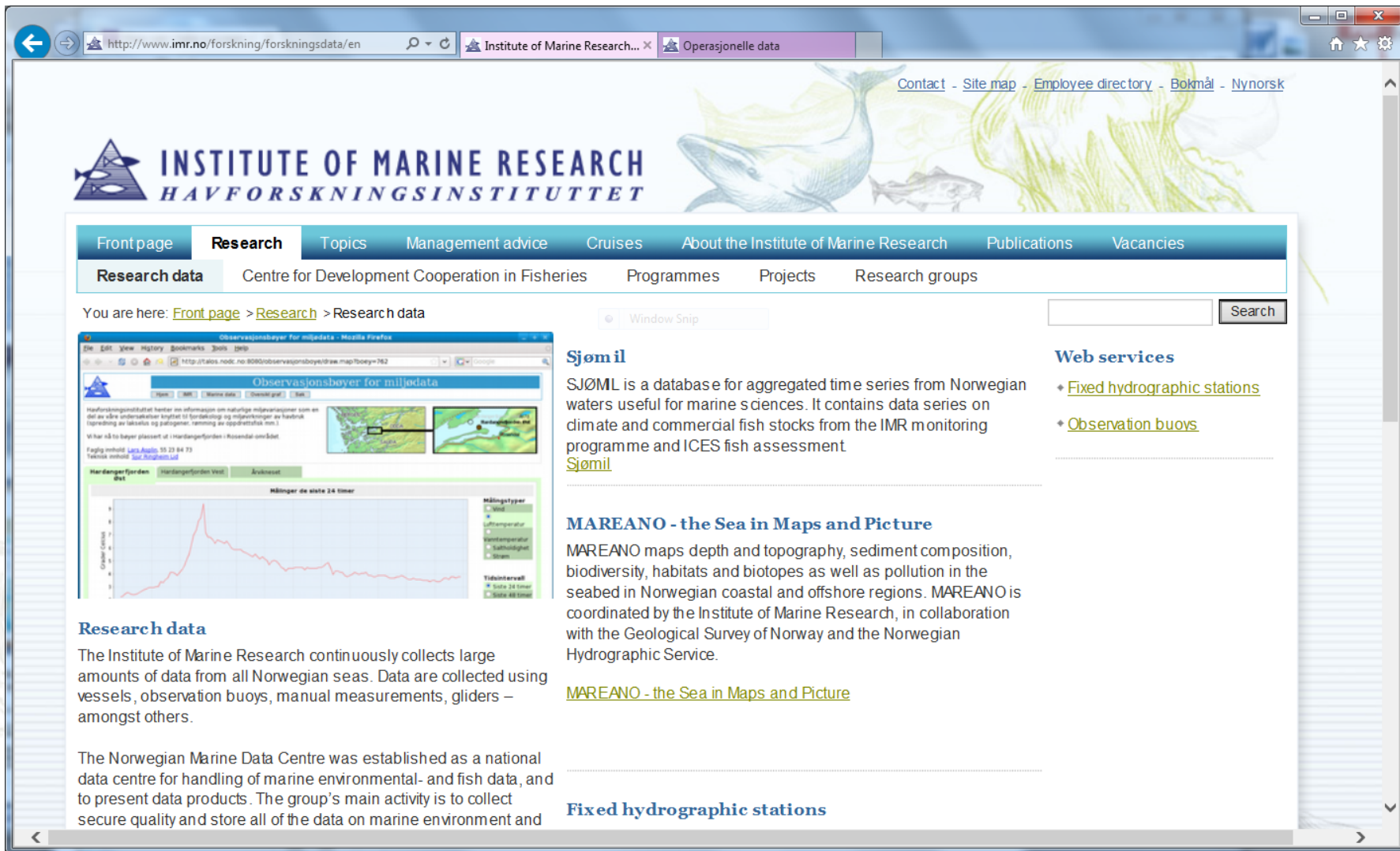


Russian late autumn-winter survey

Fish

Contact person: elena.eriksen@imr.no

www.imr.no/forskning/forskningsdata/en



The screenshot shows the website of the Institute of Marine Research (IMR) at <http://www.imr.no/forskning/forskningsdata/en>. The page features a header with the IMR logo and name in both Norwegian and English. A navigation bar includes links for Front page, Research, Topics, Management advice, Cruises, About the Institute of Marine Research, Publications, and Vacancies. Below this, a secondary navigation bar lists Research data, Centre for Development Cooperation in Fisheries, Programmes, Projects, and Research groups. The main content area is titled "You are here: Front page > Research > Research data". It contains a section for "Observasjonsbøyer for miljødata" (Observation buoys for environmental data) with a map and a line graph showing data over time. To the right, there are sections for "Sjømil" (Marine environment) and "Web services", both listing various data series and services. At the bottom, there are sections for "Research data" and "Fixed hydrographic stations".

INSTITUTE OF MARINE RESEARCH
HAVFORSKNINGSINSTITUTTET

Front page | **Research** | Topics | Management advice | Cruises | About the Institute of Marine Research | Publications | Vacancies

Research data | Centre for Development Cooperation in Fisheries | Programmes | Projects | Research groups

You are here: [Front page](#) > [Research](#) > Research data

Observasjonsbøyer for miljødata

Sjømil

SJØMIL is a database for aggregated time series from Norwegian waters useful for marine sciences. It contains data series on climate and commercial fish stocks from the IMR monitoring programme and ICES fish assessment.

Web services

- ♦ [Fixed hydrographic stations](#)
- ♦ [Observation buoys](#)

MAREANO - the Sea in Maps and Picture

MAREANO maps depth and topography, sediment composition, biodiversity, habitats and biotopes as well as pollution in the seabed in Norwegian coastal and offshore regions. MAREANO is coordinated by the Institute of Marine Research, in collaboration with the Geological Survey of Norway and the Norwegian Hydrographic Service.

Research data

The Institute of Marine Research continuously collects large amounts of data from all Norwegian seas. Data are collected using vessels, observation buoys, manual measurements, gliders – amongst others.

The Norwegian Marine Data Centre was established as a national data centre for handling of marine environmental- and fish data, and to present data products. The group's main activity is to collect secure quality and store all of the data on marine environment and

Fixed hydrographic stations

Contact person: helge.sagan@imr.no

From mapping and monitoring to understanding processes and links



Two Strategic Initiatives

Investigating,
among other:

Processes and interactions in the food-web

- SI Arctic = the Arctic Sea (north and west of Svalbard) (leader: randi.ingvaldsen@imr.no)

- TIBIA = Trophic interactions in the Barents Sea - steps towards an Integrated Ecosystem Assessment (leader: hein.rune.skjoldal@imr.no)



50°W

40°W 20°W

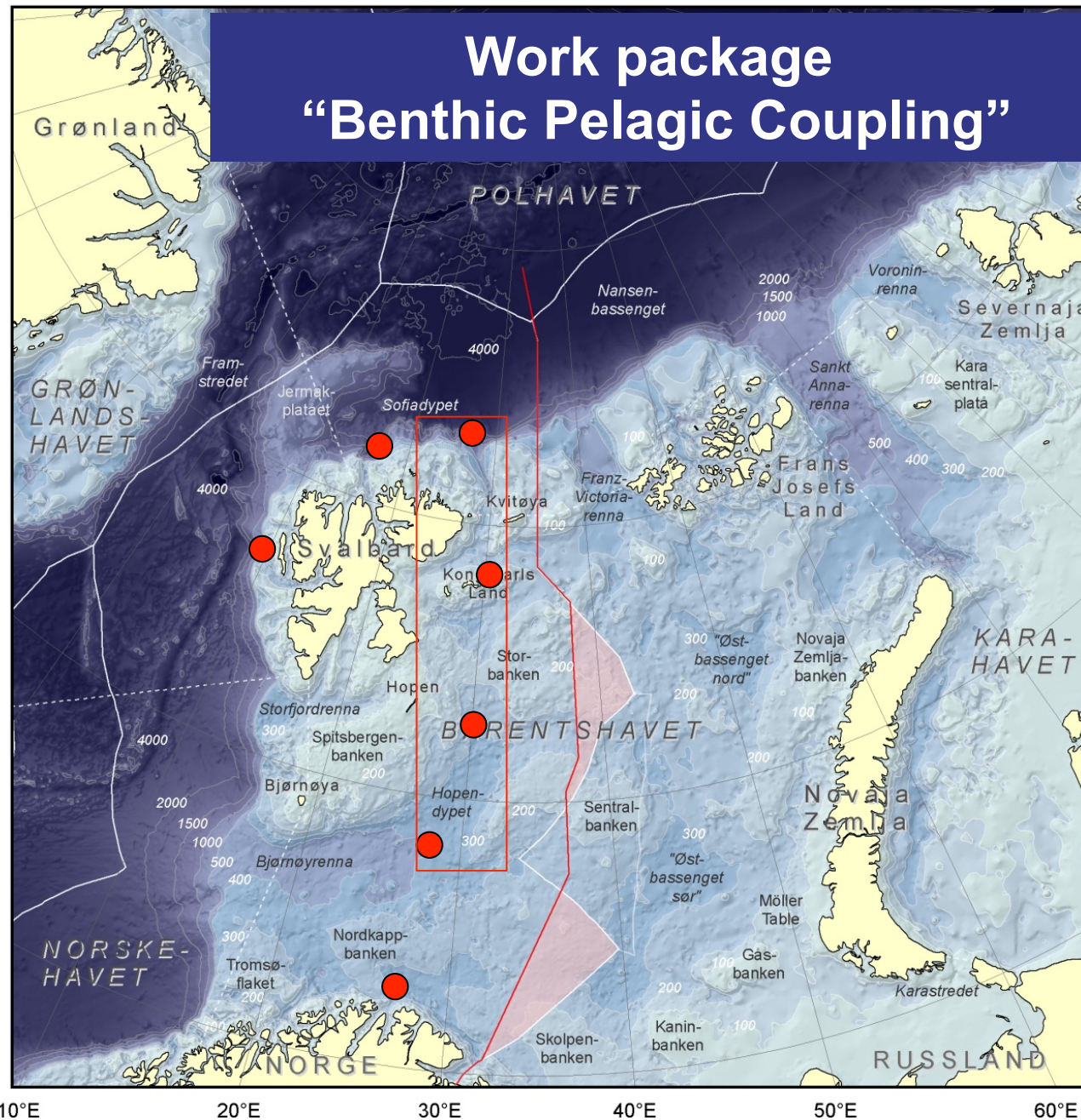
90°E 110°E

120°E

Work package “Benthic Pelagic Coupling”

Barents Sea DBO ?

Ecosystem data
obtained
annually

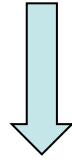


Potential partners frequently operating in the Barents Sea

- University of Tromsø (UiT)
- University on Svalbard (UNIS)
- Norwegian Polar Institute (NP)
- Germany (AWI)
- Poland (PAS)



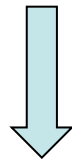
Post-Doctoral researcher



Boreal-Arctic Marine food-web ecology (stable isotopes) in the “*DBO*” transect

3 year (2015-2017)

IMR, Tromsø, Norway (north of the polar circle).



Possible interaction with DBO/PAG

Please contact me: lis.lindal.joergensen@imr.no



Users of the Barents Sea data

- CBMP
 - AMAP
 - PAME
- } Arctic council
- ICES -> Joint Russian-Norwegian Fishery commission
 - NO-RU Management plan -> Joint Russian-Norwegian Environmental commission

