

Japanese Arctic Ocean observation plan in 2016

1) Japanese research vessel cruise

- R/V Mirai Arctic cruise in August-September 2016

→ **New Arctic research project, ArCS** (Arctic Challenge for Sustainability)

2) Participations in/contribution to the missions of PAG partners

- IBRV Araon Arctic cruise;
- CCGS Louis S. St.- Laurant cruise;
- RUSALCA cruise (mooring at Herald canyon)

3) Others

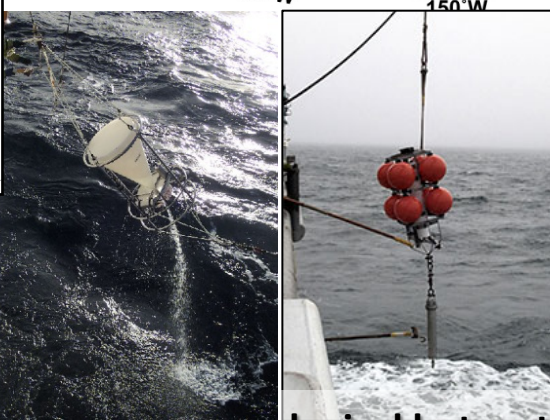
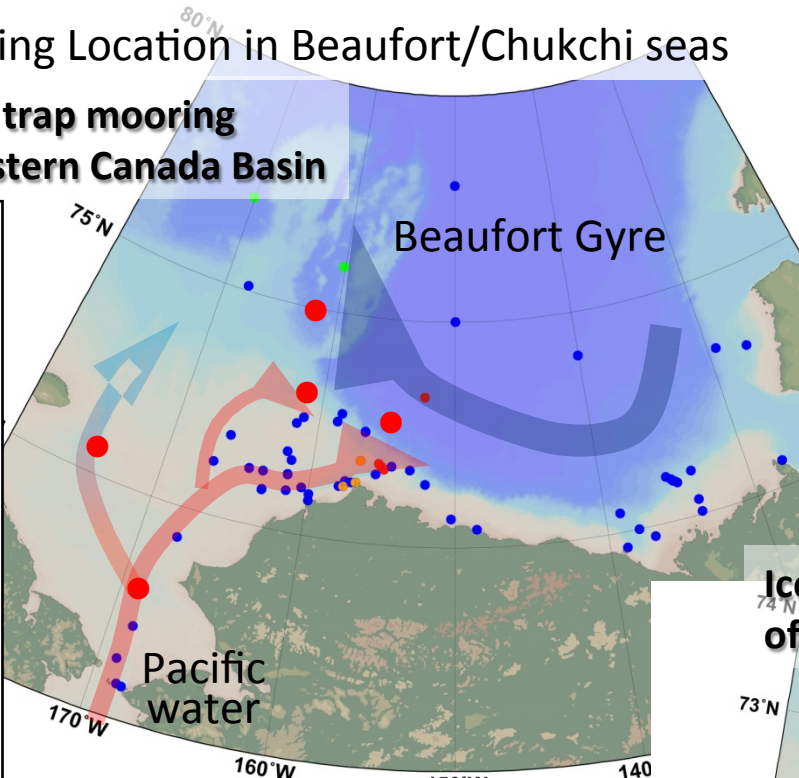
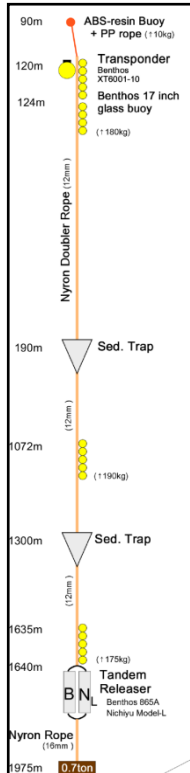
- XCTD observation in the Arctic Ocean
(CCGS L. S. St.- Laurant)

and more ? . . .

2016 Mooring missions in the PAR region

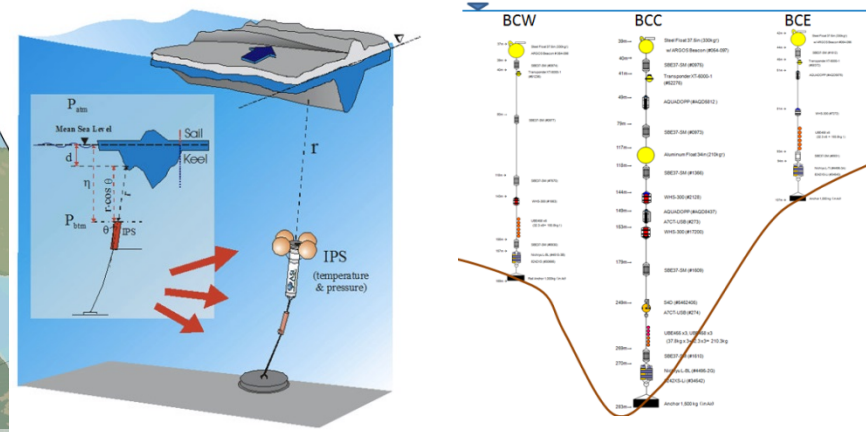
Mooring Location in Beaufort/Chukchi seas

Sediment trap mooring in the western Canada Basin

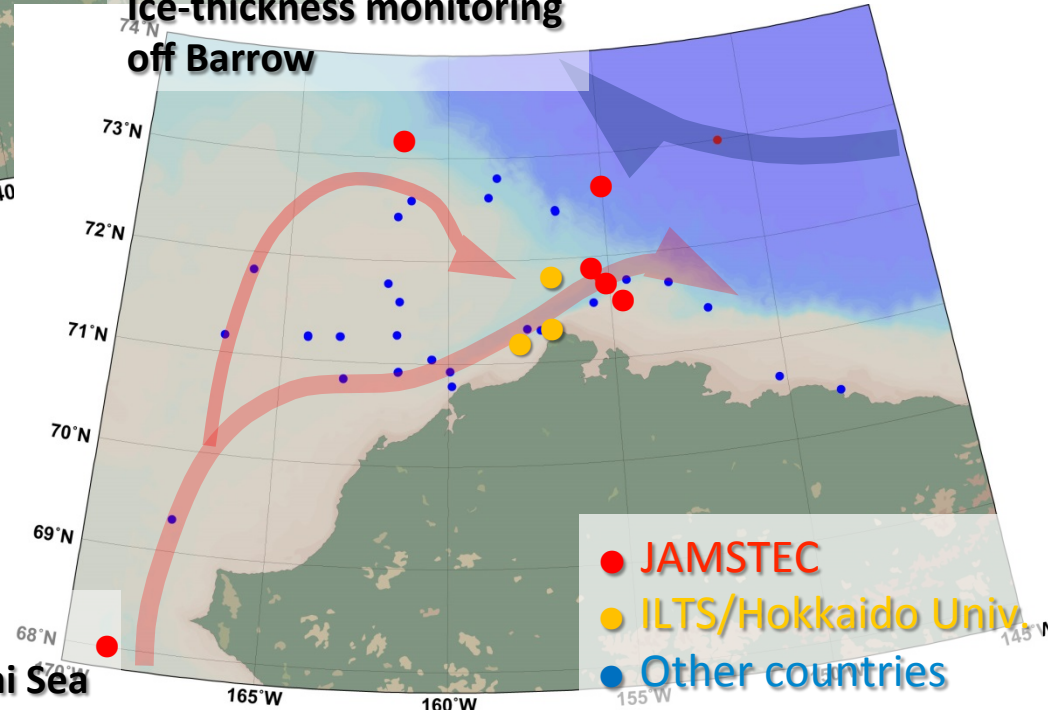


Biological hotspot in the southern Chukchi Sea

Long-term monitoring At the mouth of Barrow Canyon



Ice-thickness monitoring off Barrow



Herald Canyon Mooring (contribution to RUSALCA)

- Name: RHE-16 (RUSALCA Herald canyon mooring - East)
- Location (plan): 70.9617 N, 174.4054 W (Eastern side of Herald Canyon)
- Deployment: RUSALCA 2016 cruise (September)
- Recovery: Next RUSALCA cruise (2017. . .)

