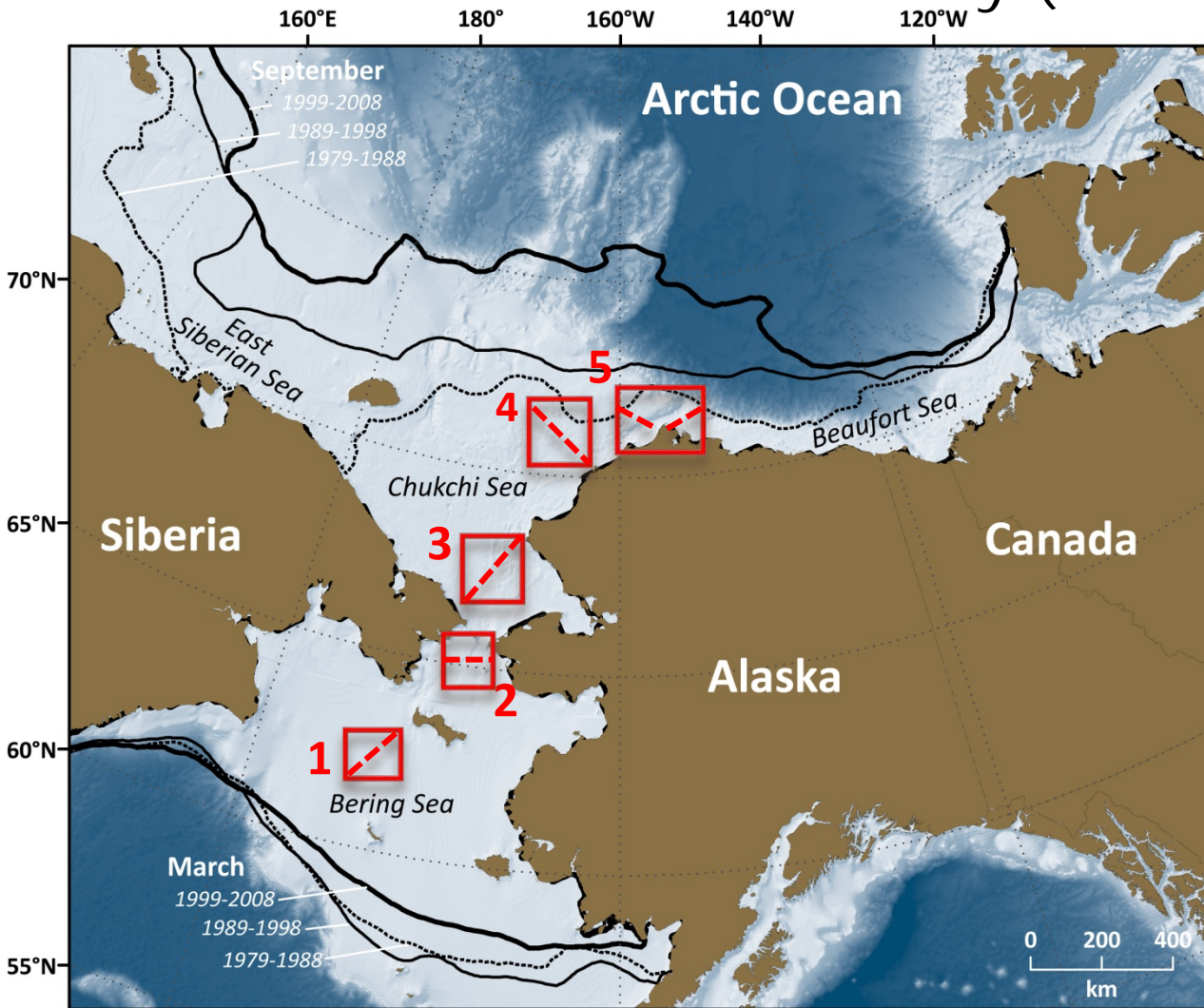


Linking Physics to Biology: the Distributed Biological Observatory (DBO)



[modified by Karen Frey from Grebmeier et al. 2010, EOS 91]

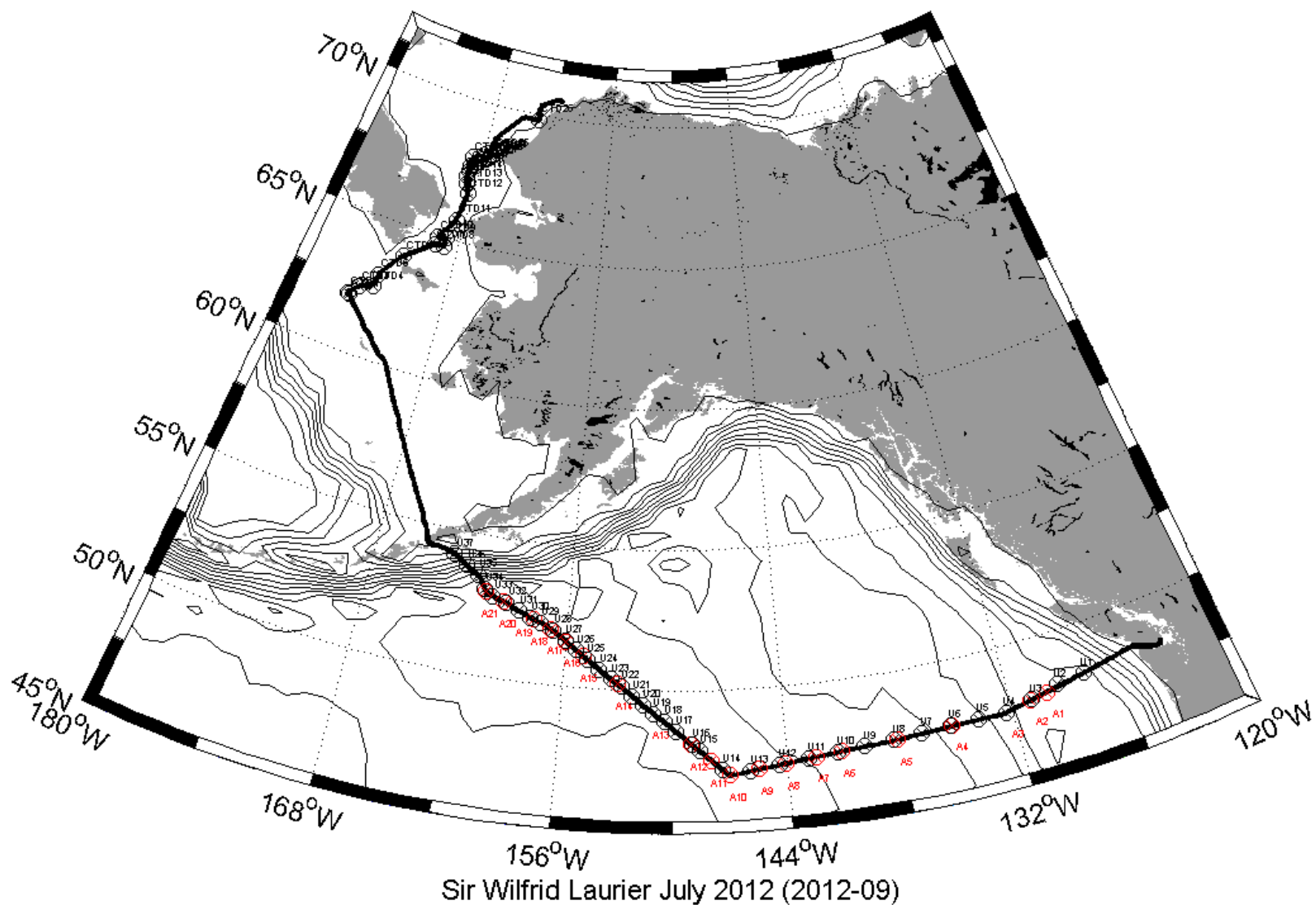
- DBO sites (red boxes) are regional “hotspot” transect lines and stations located along a latitudinal gradient
- DBO sites are considered to exhibit high productivity, biodiversity, and overall rates of change
- DBO sites will serve as a change detection array for the identification and consistent monitoring of biophysical responses
- Sites occupied by national and international entities with shared data plan

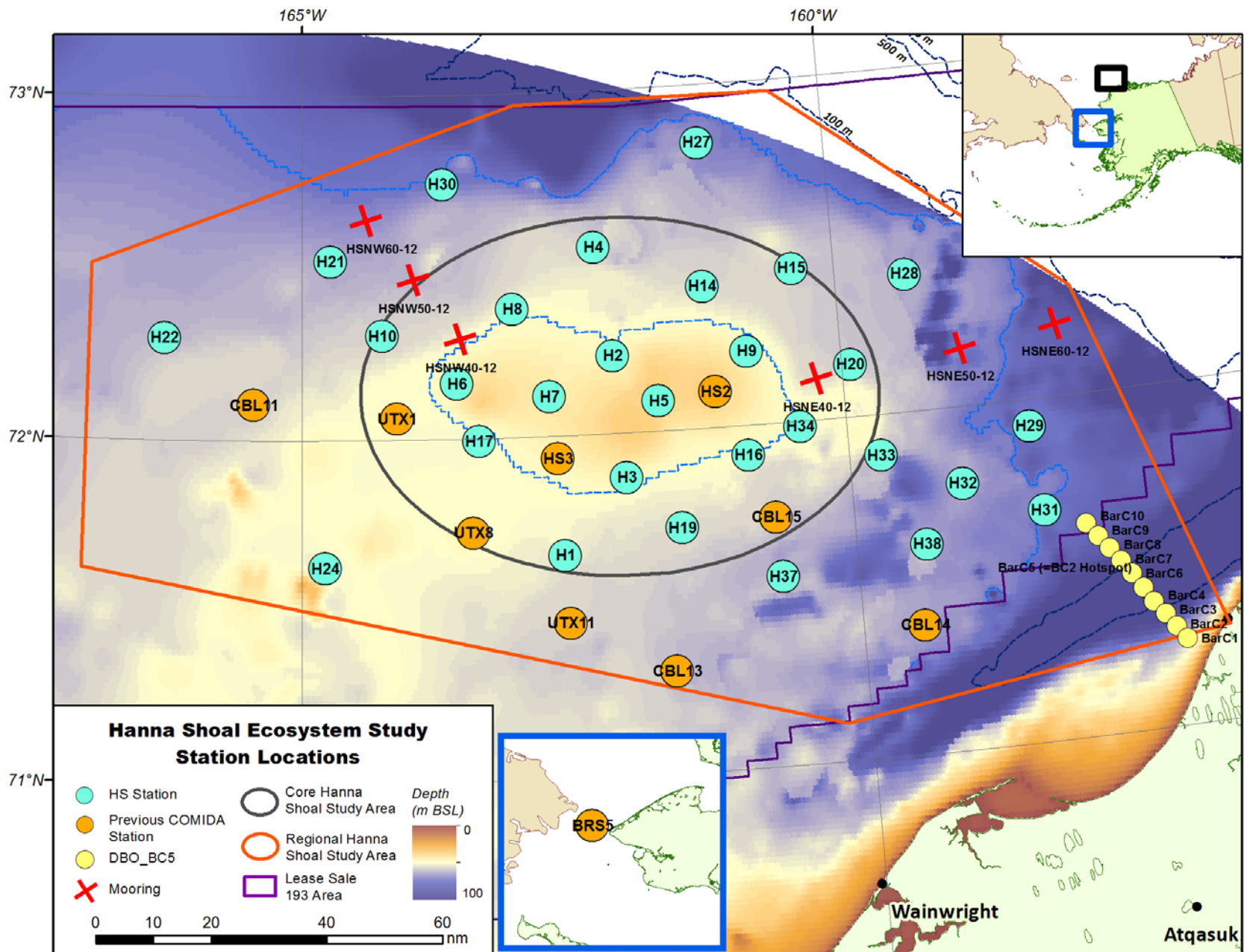


Sir Wilfrid Laurier ship track July 2013

C3O West

NSF and DFO Canada collaboration





R/V Mirai (JAMSTEC)

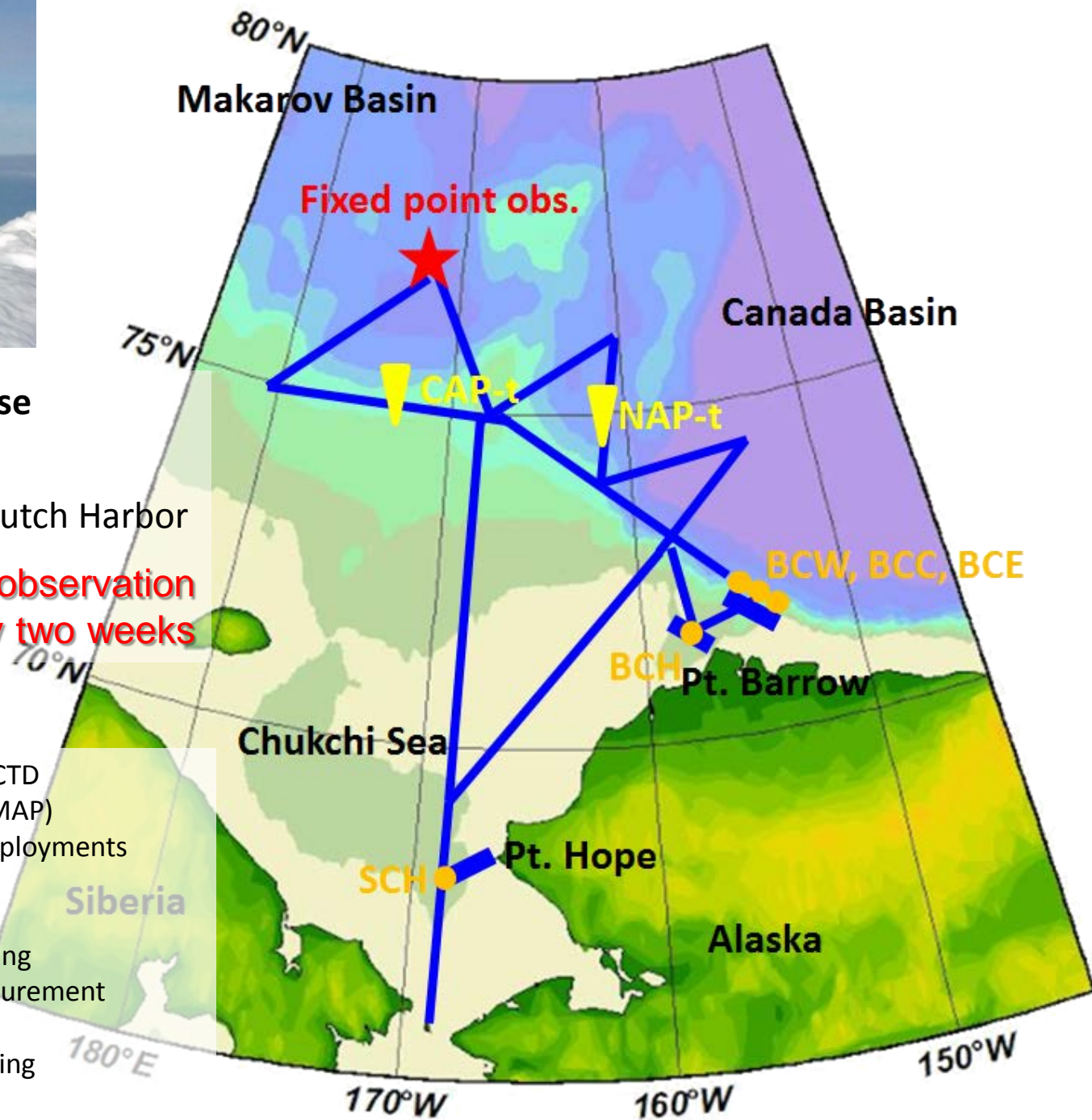


R/V Mirai 2013 Arctic cruise

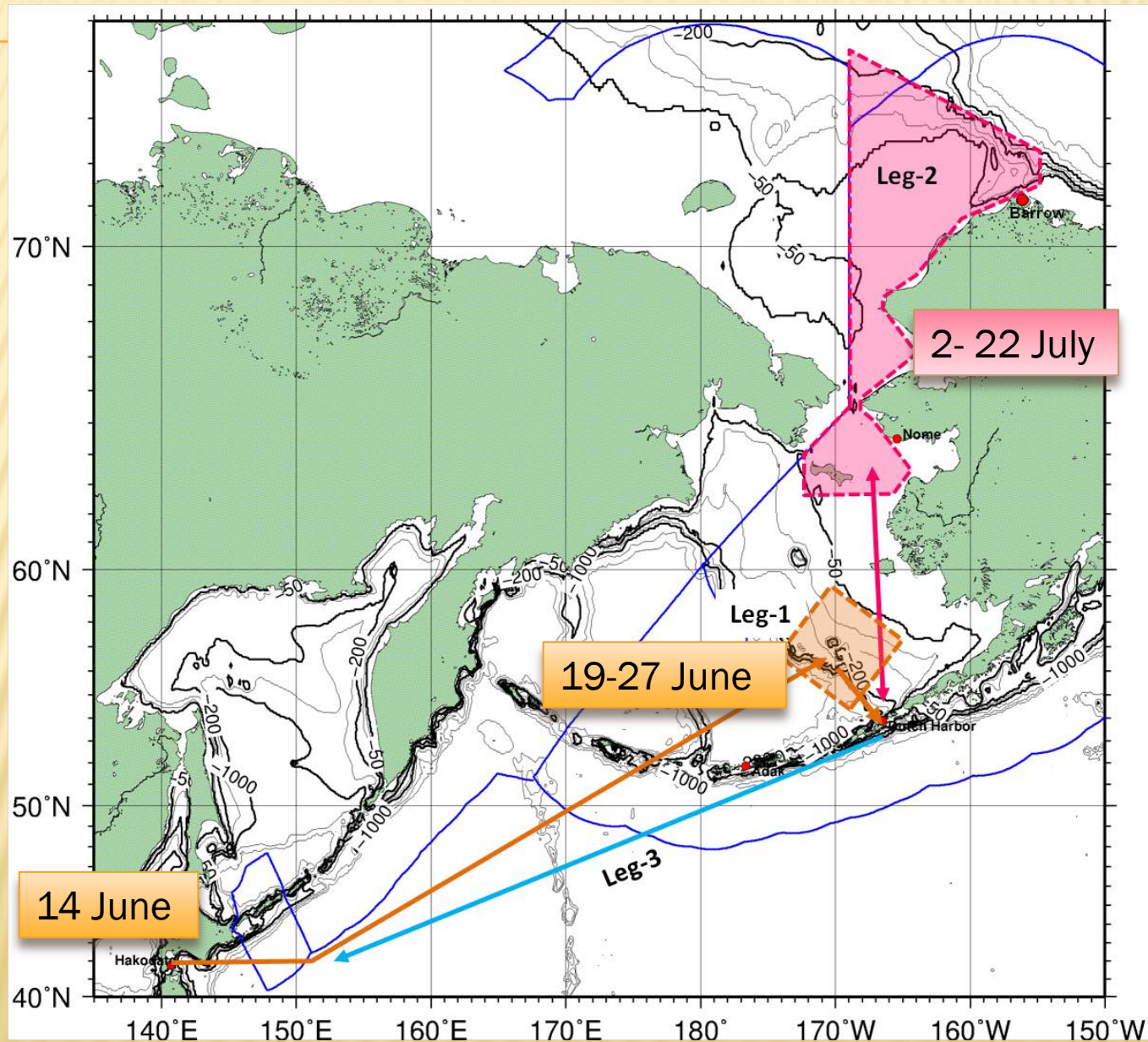
2013.08.28 Dutch Harbor
to 2013.10.07 Dutch Harbor

including fixed point observation
for approximately two weeks

- CTD/LADCP/water sampling & XCTD
- Turbulent measurement (TurboMAP)
- Sed. Trap mooring recoveries/deployments
- Plankton net sampling
- Bio-geochemical measurements
- General meteorological monitoring
- Radio-sonde/Ozone-sonde measurement
- Doppeler rader measurement
- Surface water sampling/monitoring
- Shipboard ADCP monitoring



CRUISE IN 2013-OSHORO-MARU (JAPAN)



SAMPLING STATIONS

