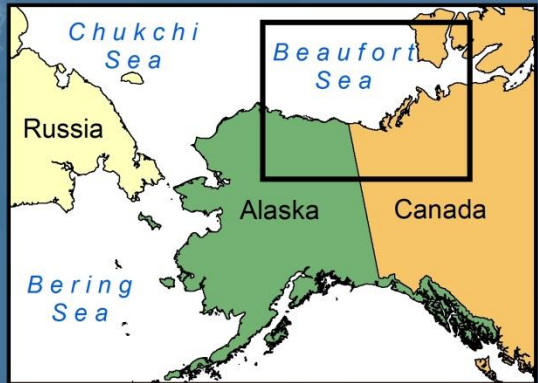


150°0'0"W

140°0'0"W

130°0'0"W

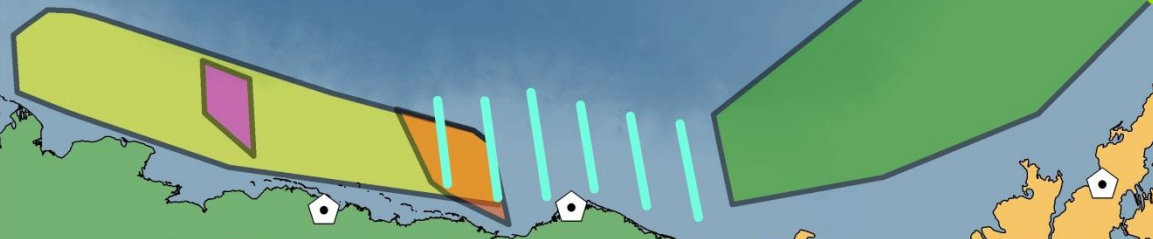
120°0'0"W



Beaufort Sea

70°0'0"N

70°0'0"N



BOEM - DFO  
2011 Central  
Beaufort and  
BOEM-DFO  
2012-2014  
US- Canada  
Transboundary  
Fish and Lower  
Trophic Survey



- UAF- 6 planned transects
- DFO- 4 planned transects
- UAF 2010- 17 stations
- UAF 2012- 2.5 transects, 18 stations
- UAF 2011- 79 stations
- DFO 2012- 6 transects, 31 stations

150°0'0"W

140°0'0"W

130°0'0"W

