

Seabird & Marine Mammal Observations during the 2010-2012 Pilot DBO

**Sue Moore (NOAA/ Fisheries ST7)
Kathy Kuletz (US F&WS)**

**DBO Workshop
27 February 2013**

Seabird Surveys - Standard Survey Protocol:

USFWS (2009) Pelagic Seabird Observer's Manual & Data Entry Software

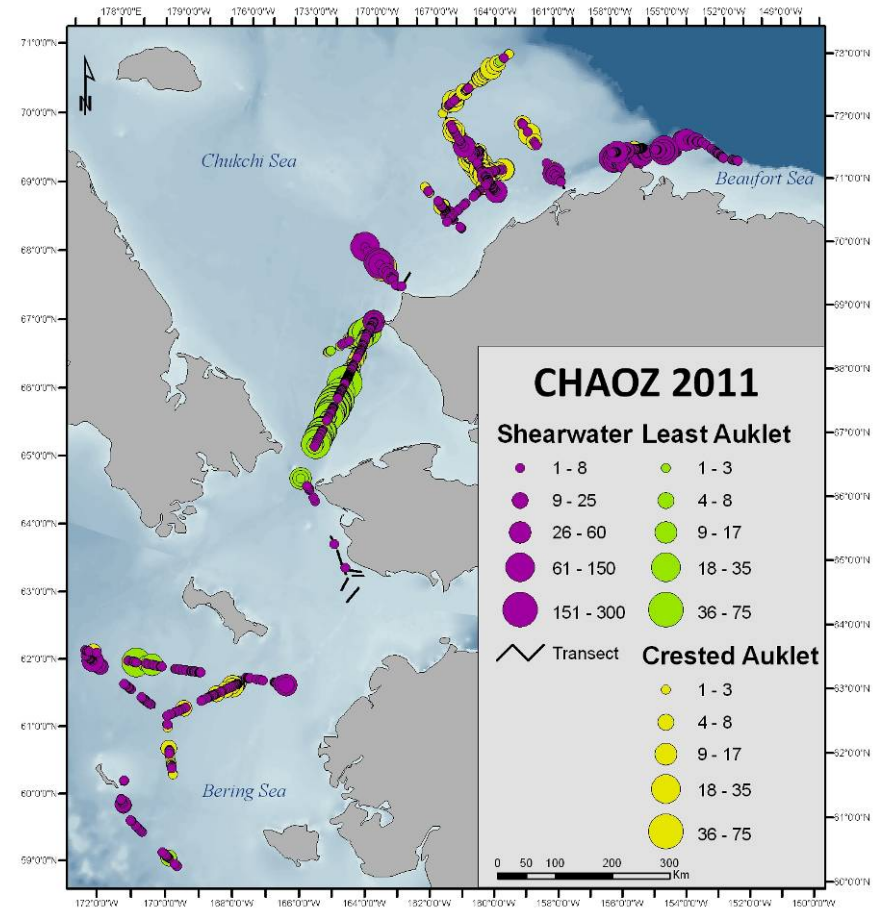
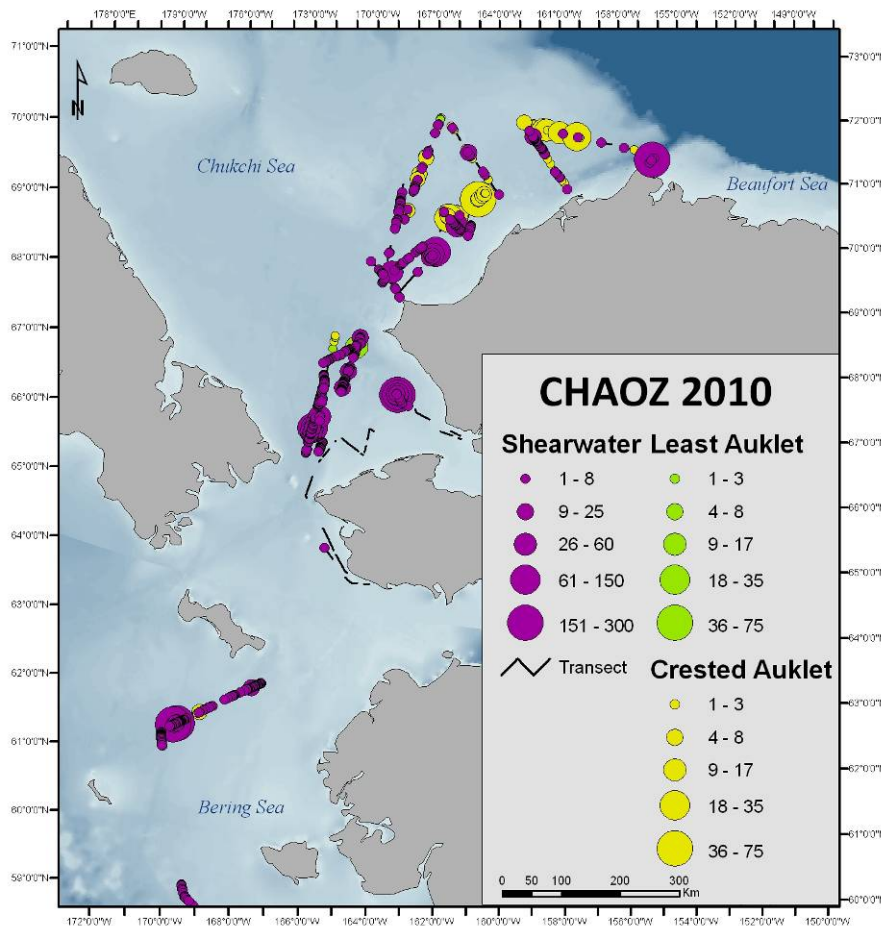
- Single observer surveys a 300m quadrant from a port **or** starboard 'station' on bridge
- Data entry on GPS-linked laptop computer



Seabird Sightings from CHAOZ Cruises (USFWS Survey Protocol)

2010 – DBO Region 3 – ‘hotspot’

2011: DBO Region 1&3 – ‘hotspot’



CHAOZ = CHukchi Acoustic Oceanographic and Zooplankton study

Marine Mammals: Watches vs. Standard Surveys

Watch Effort: 1-2 person, handheld binoculars, excel spread sheet



Standard Survey : 3-person team, Big Eye binoculars, Wincruz program

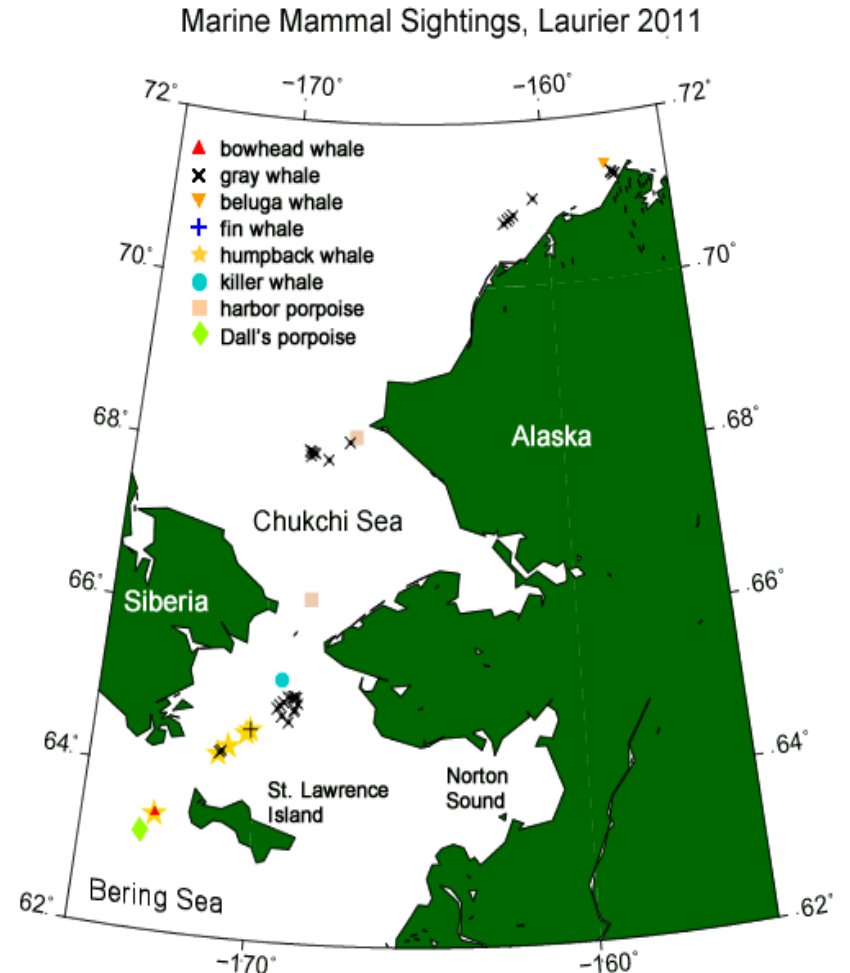
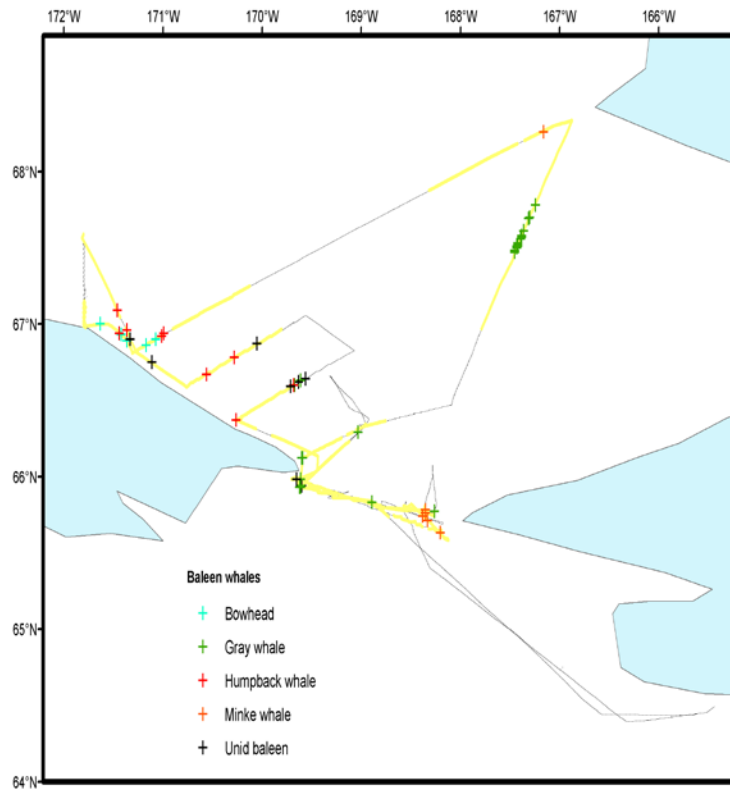


Marine Mammal Watches

* need to develop 'standard watch' protocol

2010 - RUSALCA: 31 July – 11 August (RT Nome)

2011 - C30: 15-20 July (N. Bering-Barrow)



Kate Stafford (APL-UW) – primary observer

DRAFT Summary of Seabird Surveys Marine Mammal Surveys & Watches

YEAR	CRUISE	Seabird Surveys	Marine Mammal Surveys	Marine Mammal Watches
2010	9 cruises	6 cruises	1 cruise	4 cruises
2011	9 cruises	5 cruises	1 cruise	4 cruises
2012	10 cruises	5 cruises	1 cruise	4 cruises
Total	28 cruises	15 cruises	3 cruises	12 cruises