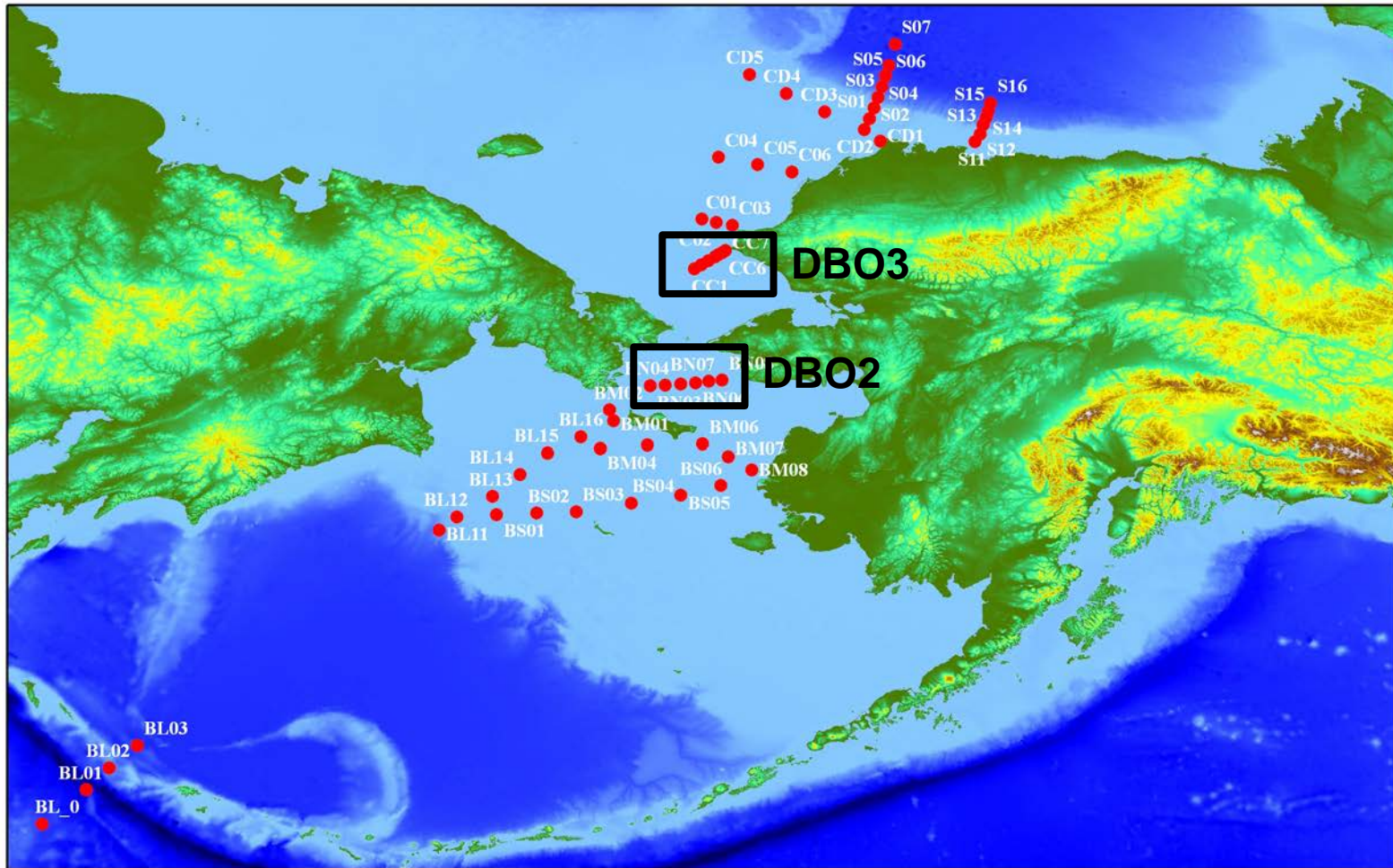
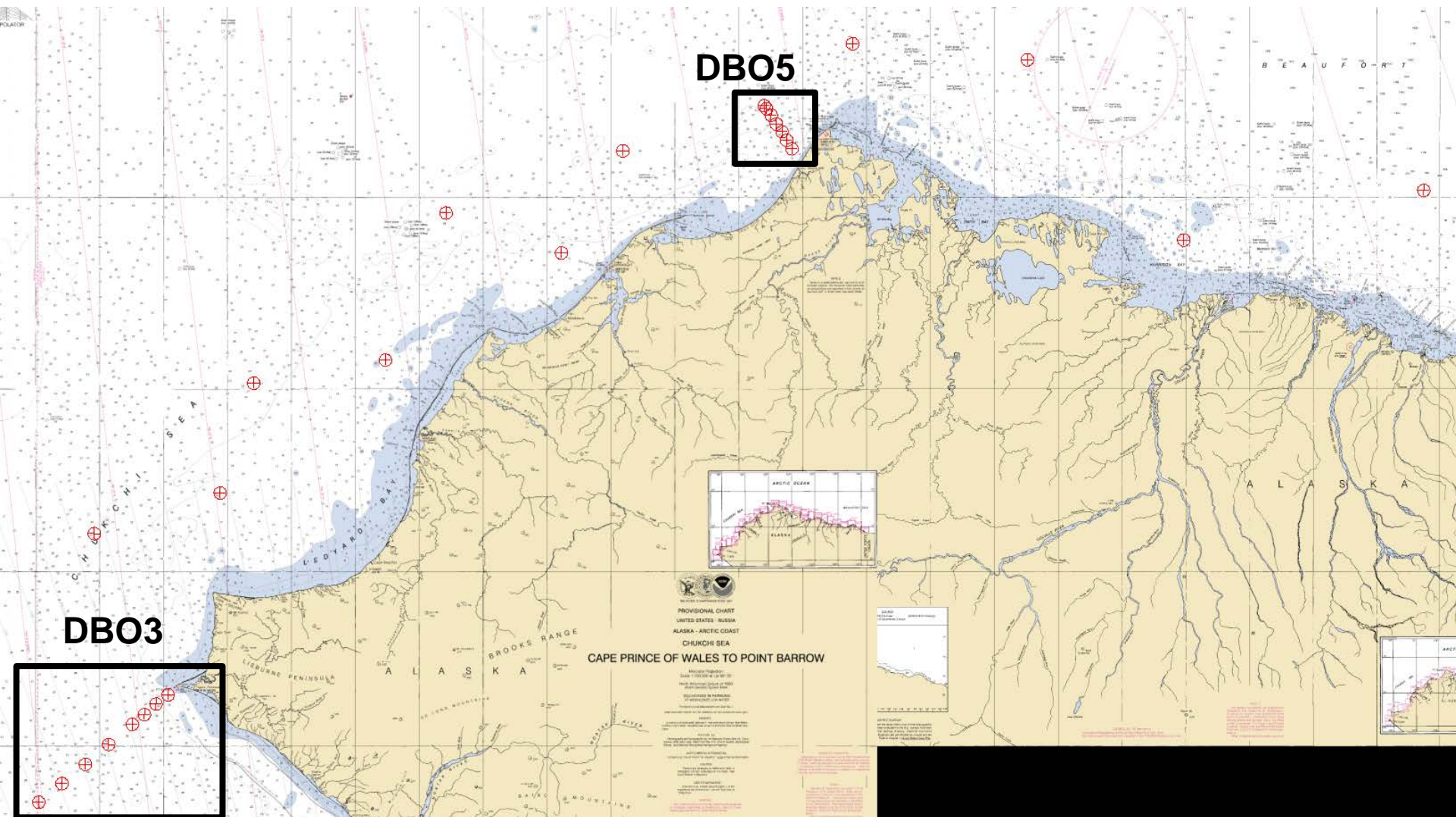


2012 Xuelong cruise track



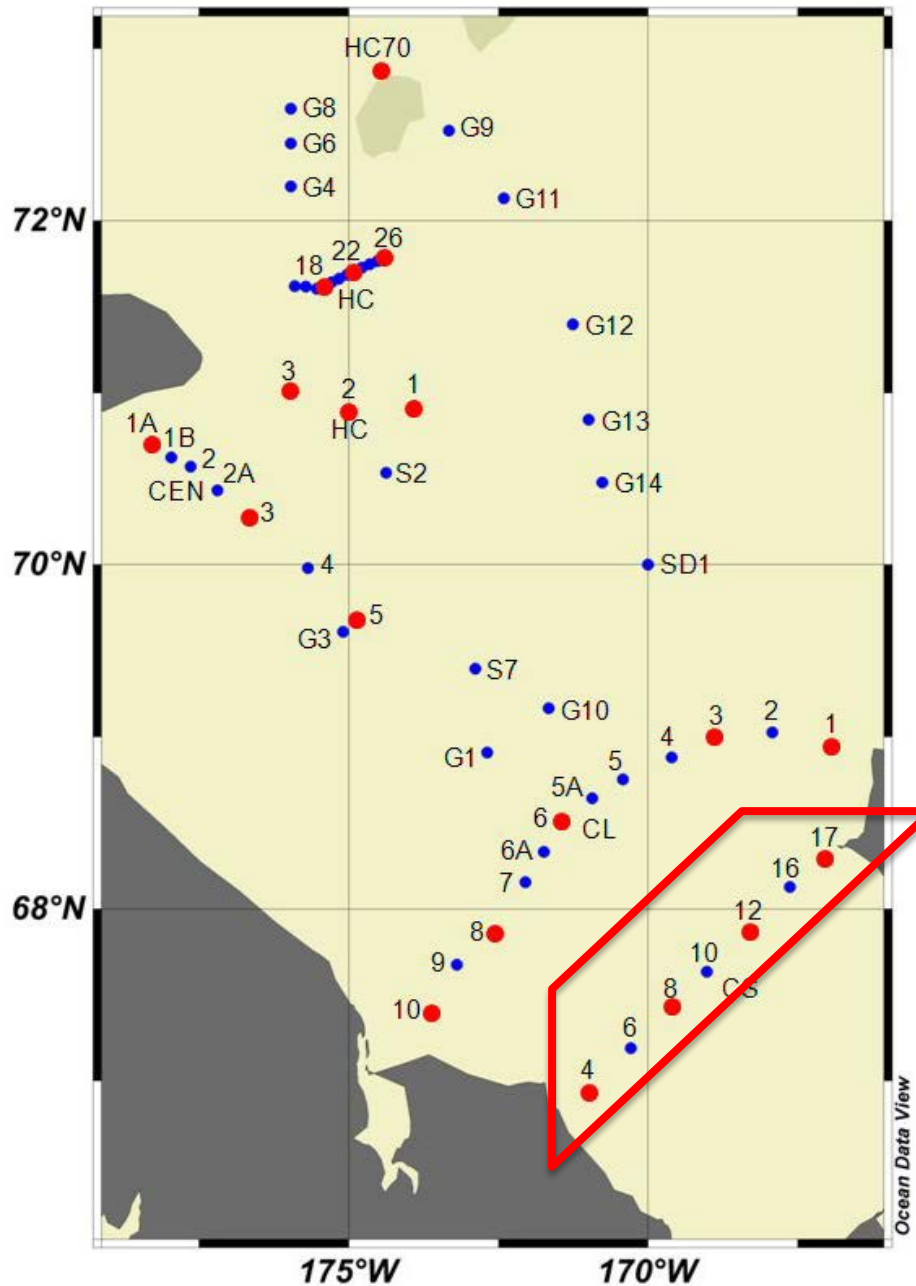
[courtesy Jianfeng He]

RV Fairweather-NOAA Hydrographic Survey- CTD data in hand (August 2012)



Leg 2 RUSALCA 2012 All Stations

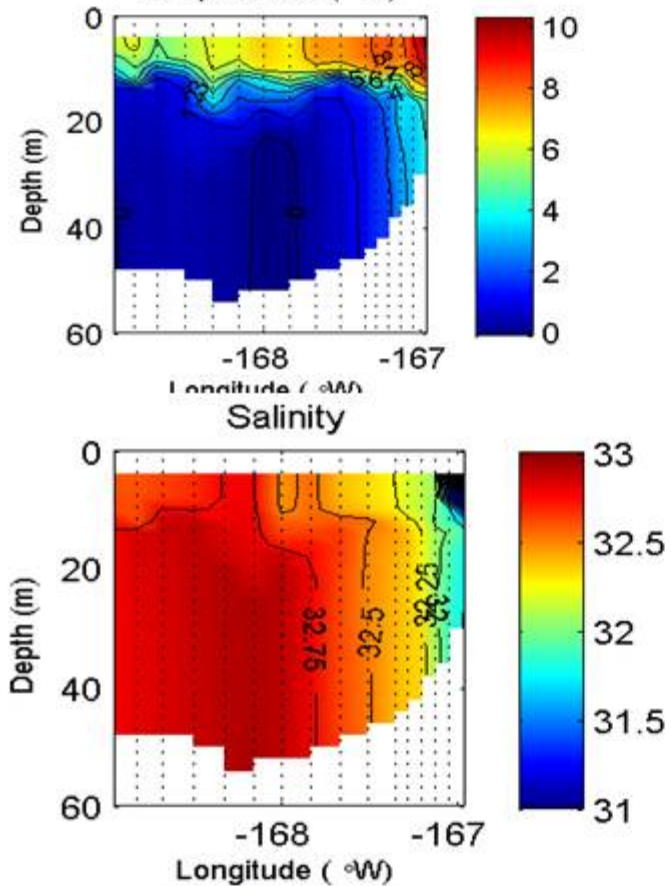
● Denotes full biological stations



DBO3=CS line

[Terry Whitledge]

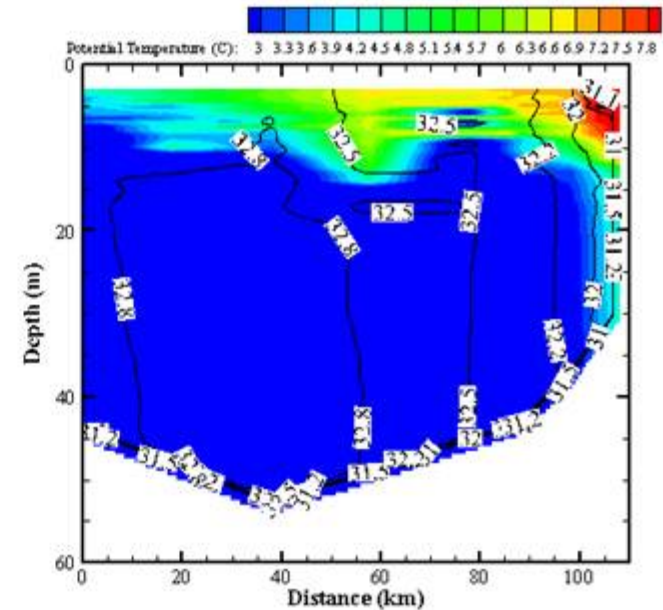
KHROMOV 16th July 2012 1203GMT
 to 17th July 2012 0154 GMT
 (run from west to east, towards US
 Temperature (°C)



CS=DBO3

Preliminary CS Section from Khromov Mooring Cruise
 plotted J. Whitefield August 2012.
 Rebecca Woodgate woodgate@apl.washington.edu

SE Chukchi Sea Transect SWL 2012-09, July 16

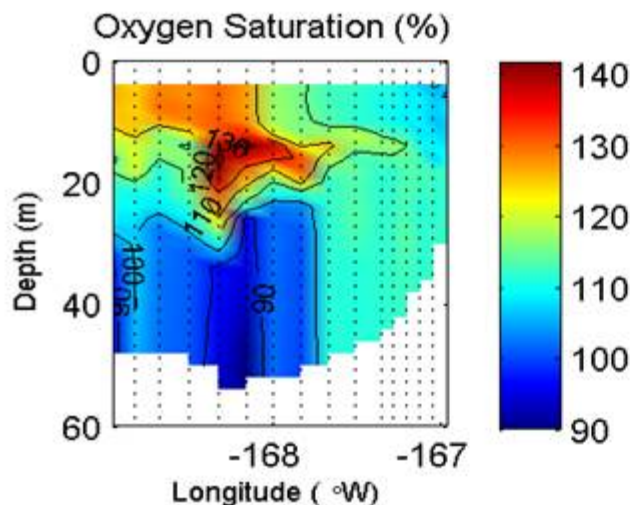
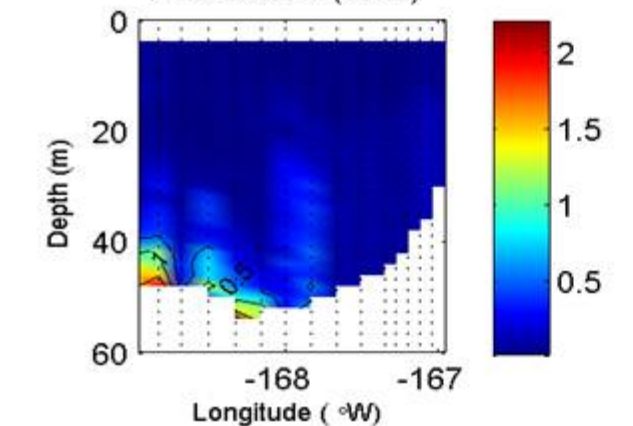


DBO3-SE Chukchi Sea

Preliminary Section from Laurier
 Cruise courtesy of Svein Vagle,
 August 2012

KHROMOV 16th July 2012 1203GMT
to 17th July 2012 0154 GMT

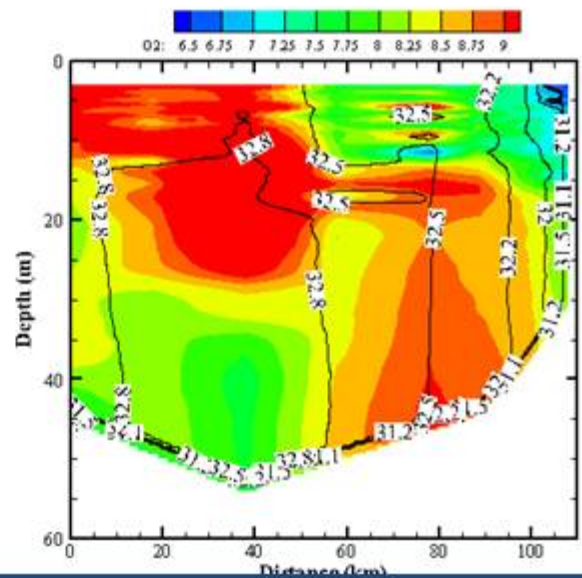
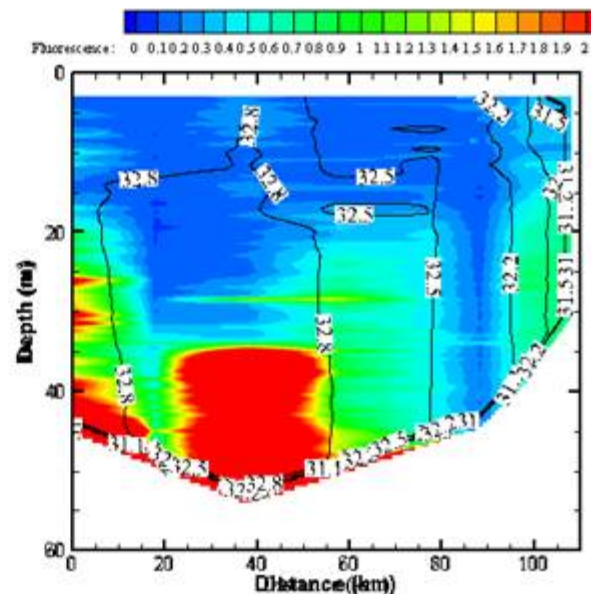
(run from west to east, towards US
Fluorometer (volts)



Preliminary CS Section from Khromov Mooring Cruise
plotted J. Whitefield August 2012.

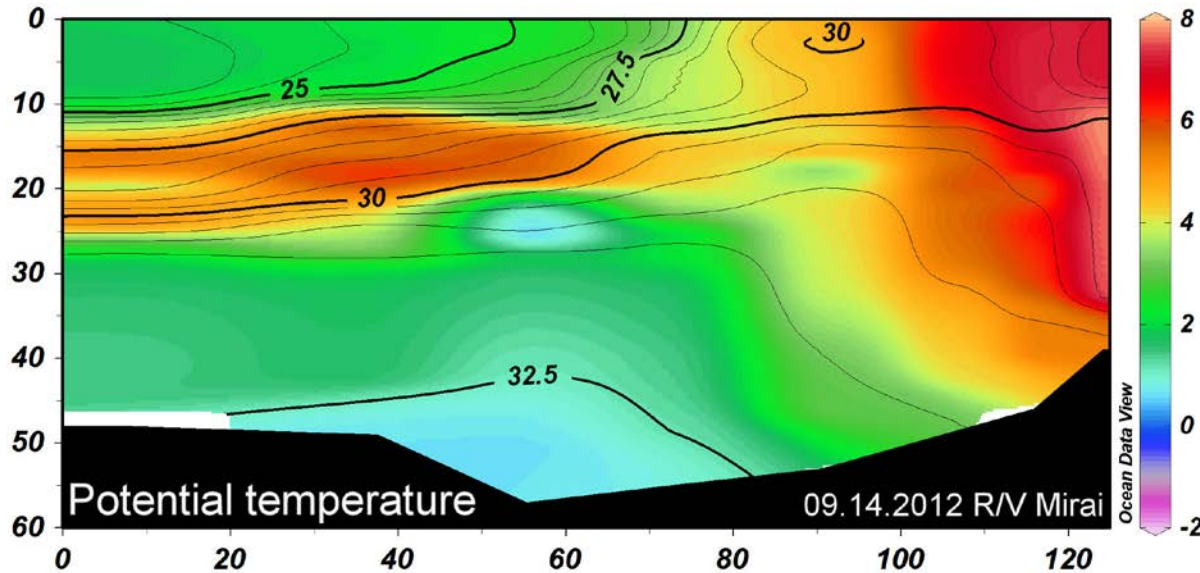
Rebecca Woodgate woodgate@apl.washington.edu

SE Chukchi Sea Transect SWL 2012-09, July 16

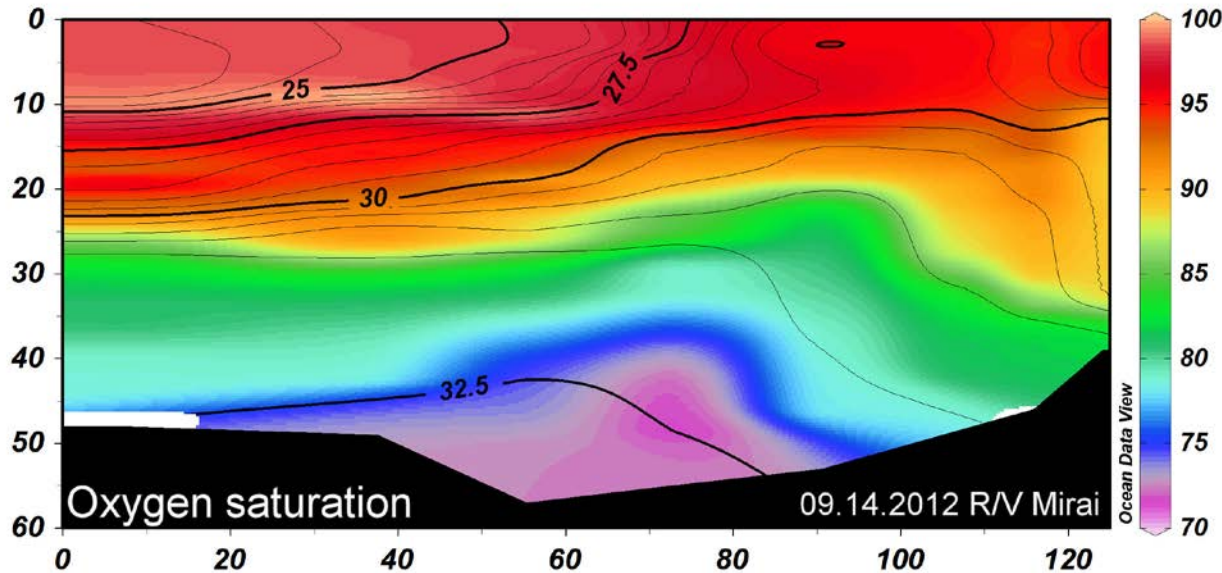


Preliminary Section from Laurier Cruise
courtesy of Svein Vagle, August 2012

DBO3 (CS line)-Southern Chuchi Sea, September 2012

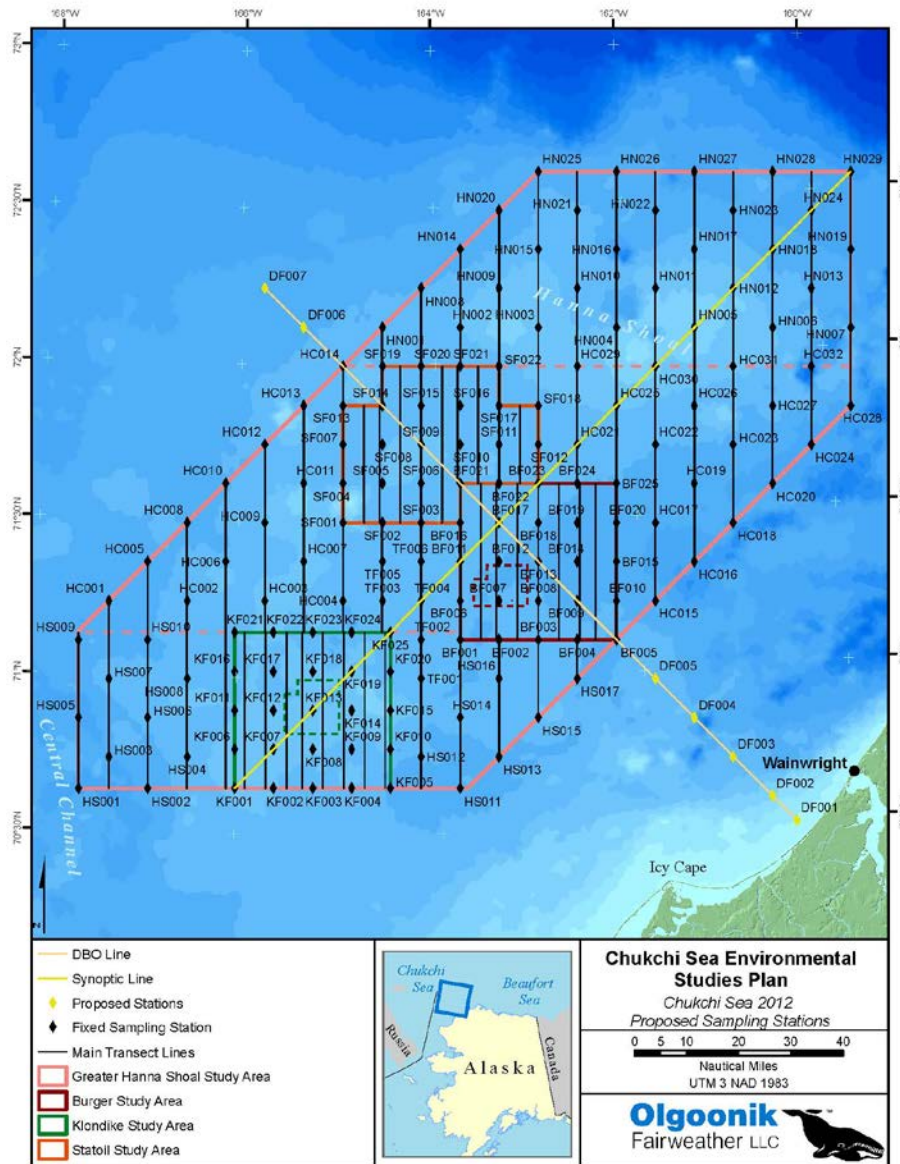


- Compared with results from July cruises, surface salinity around 168W (and westward) significantly decrease in mid September.



- Another interesting point is that oxygen saturation in the Hope Valley (central and western sides of this section) also significantly decrease.

CSEAP (Chukchi Sea Environmental Assessment Program (Shell-Conoco-Phillips-StatOil)-August 2012



- Initial DBO4, but possibly too long and industry only occupied part of it in 2012; perhaps revise to focus SE side of Hanna Shoal biological hotspot and new current flow patterns observed (Bob D? comment)