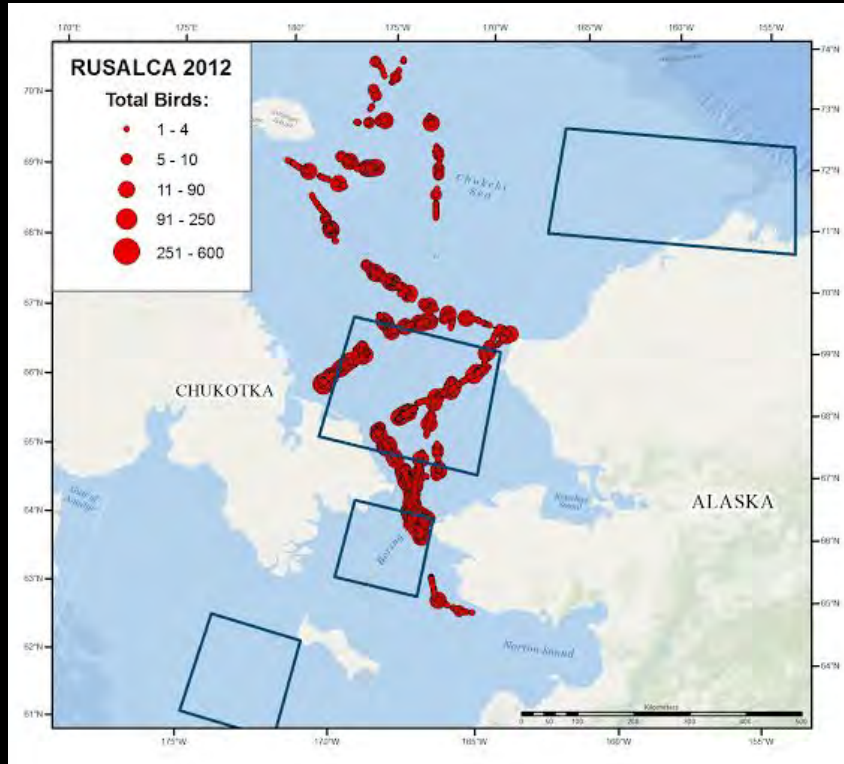


RUSALCA 2012 & 2014 – Marine Bird Surveys



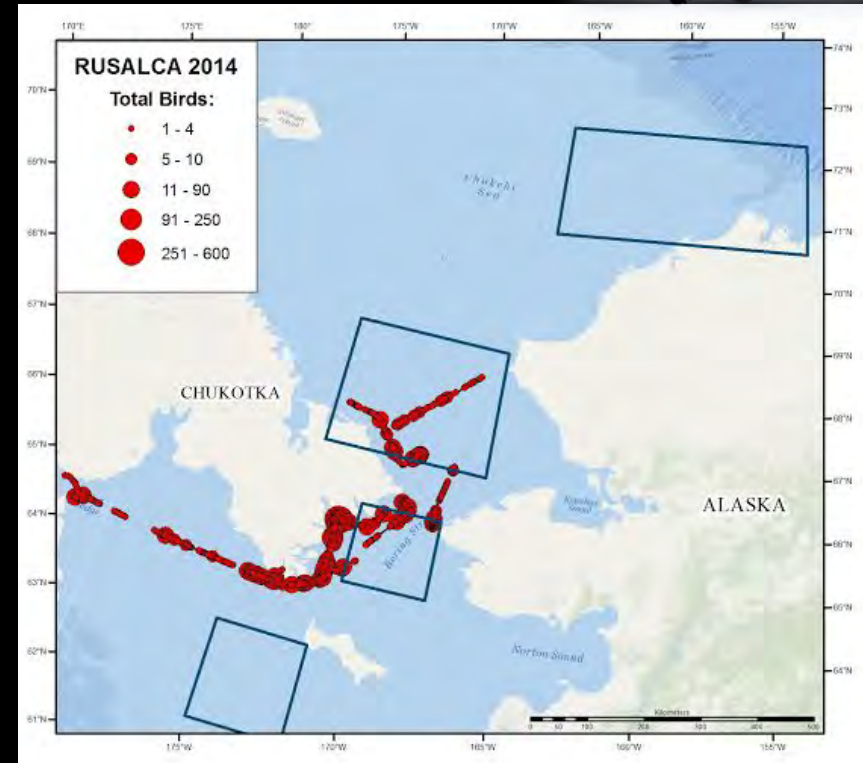
2,235 km surveyed



Leg 1 10 – 20 July 2012
(NE Bering & S. Chukchi)

Leg 2 28 Aug – 16 Sept
(N. Chukchi & far NE segments)

1,476 km surveyed

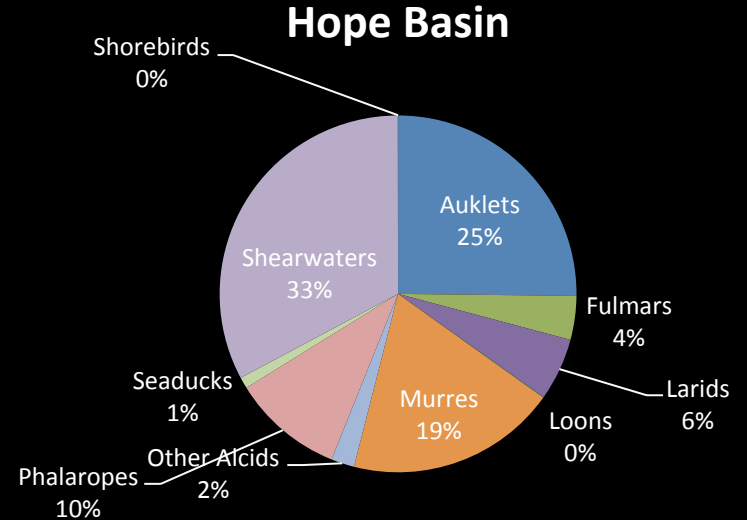
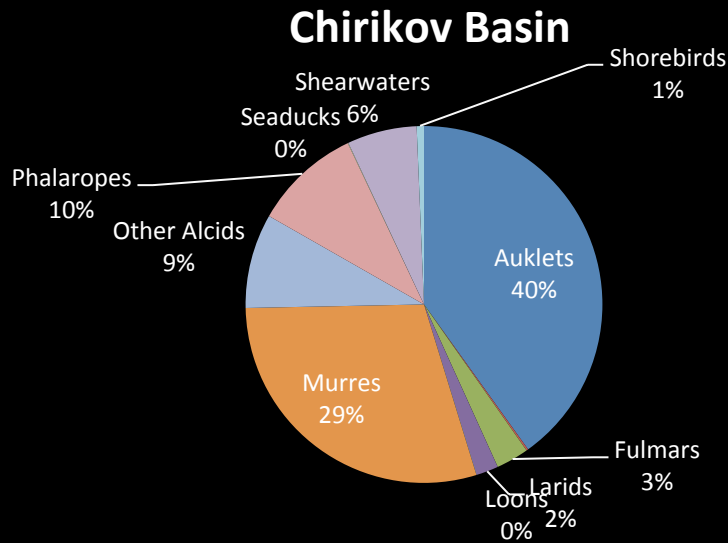


7 – 16 July 2014
NW Bering & S. Chukchi
More coastal coverage

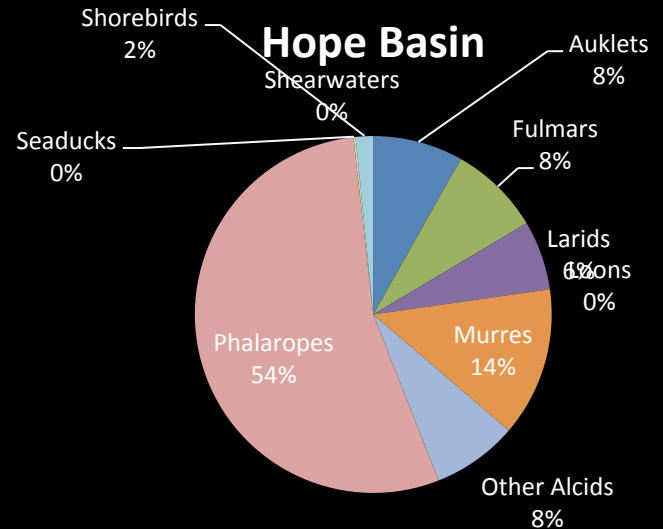
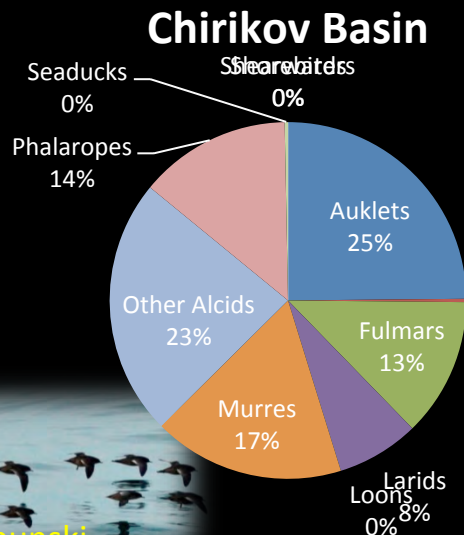
PAG & DBO workshop, Seattle, Oct 2014.
USFWS seabird surveys; K. Kuletz & E. Labunski.
Contact : kathy_kuletz@fws.gov

RUSALCA 2012 & 2014 – Seabird Distribution in DBOs

**2012
JULY**



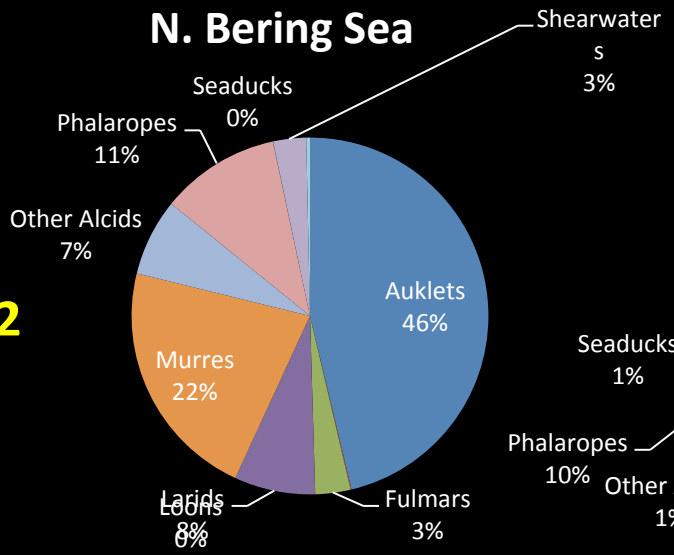
**2014
JULY**



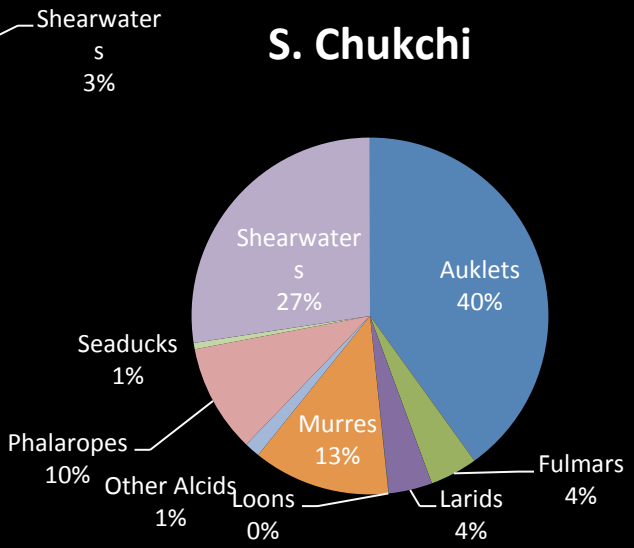
RUSALCA 2012 & 2014 – Seabird Distribution by Region

2012

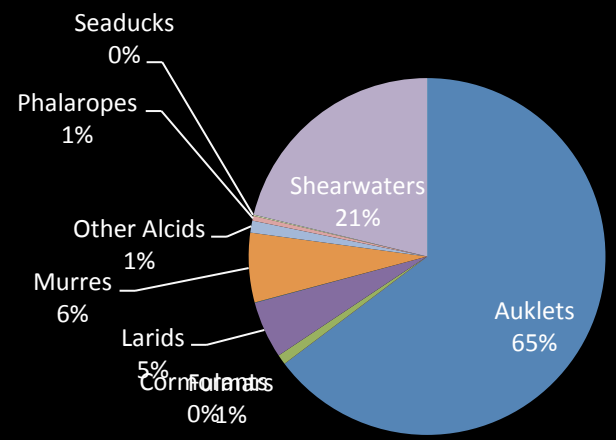
JULY
N. Bering Sea



JULY
S. Chukchi

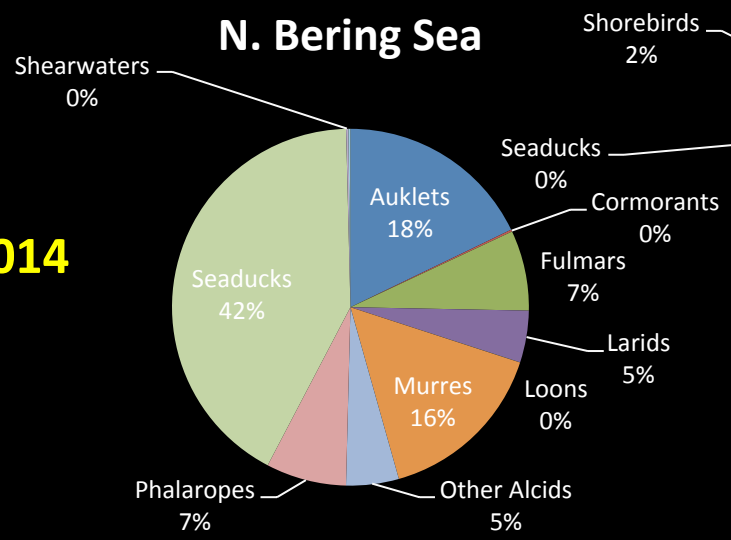


SEPT
N. Chukchi



2014

JULY
N. Bering Sea



JULY
S. Chukchi

