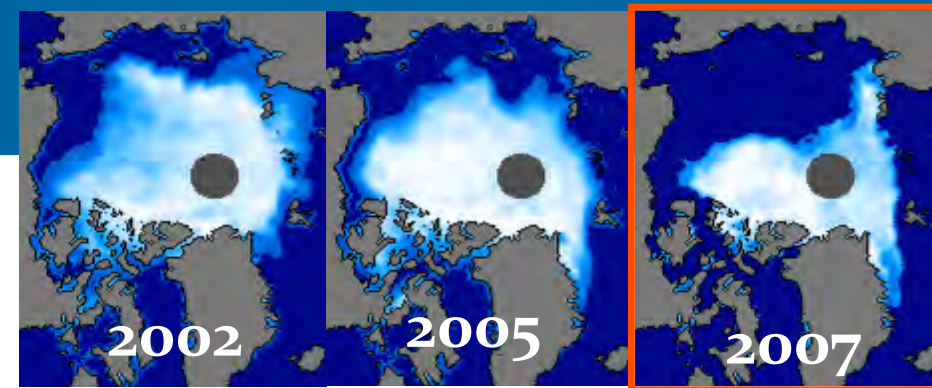
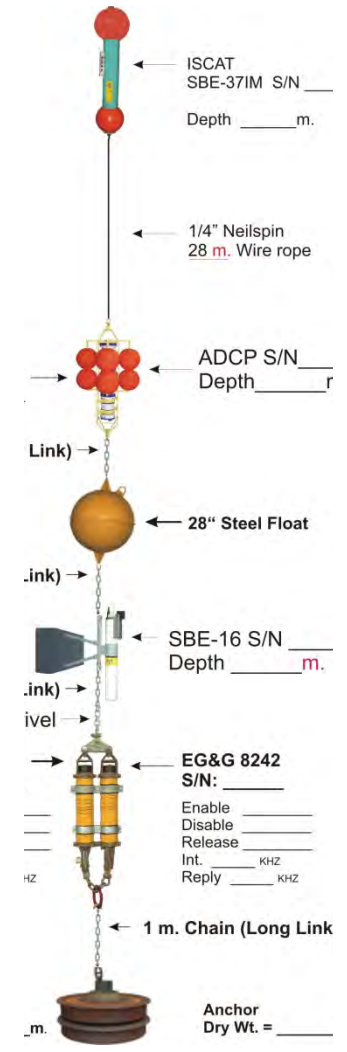
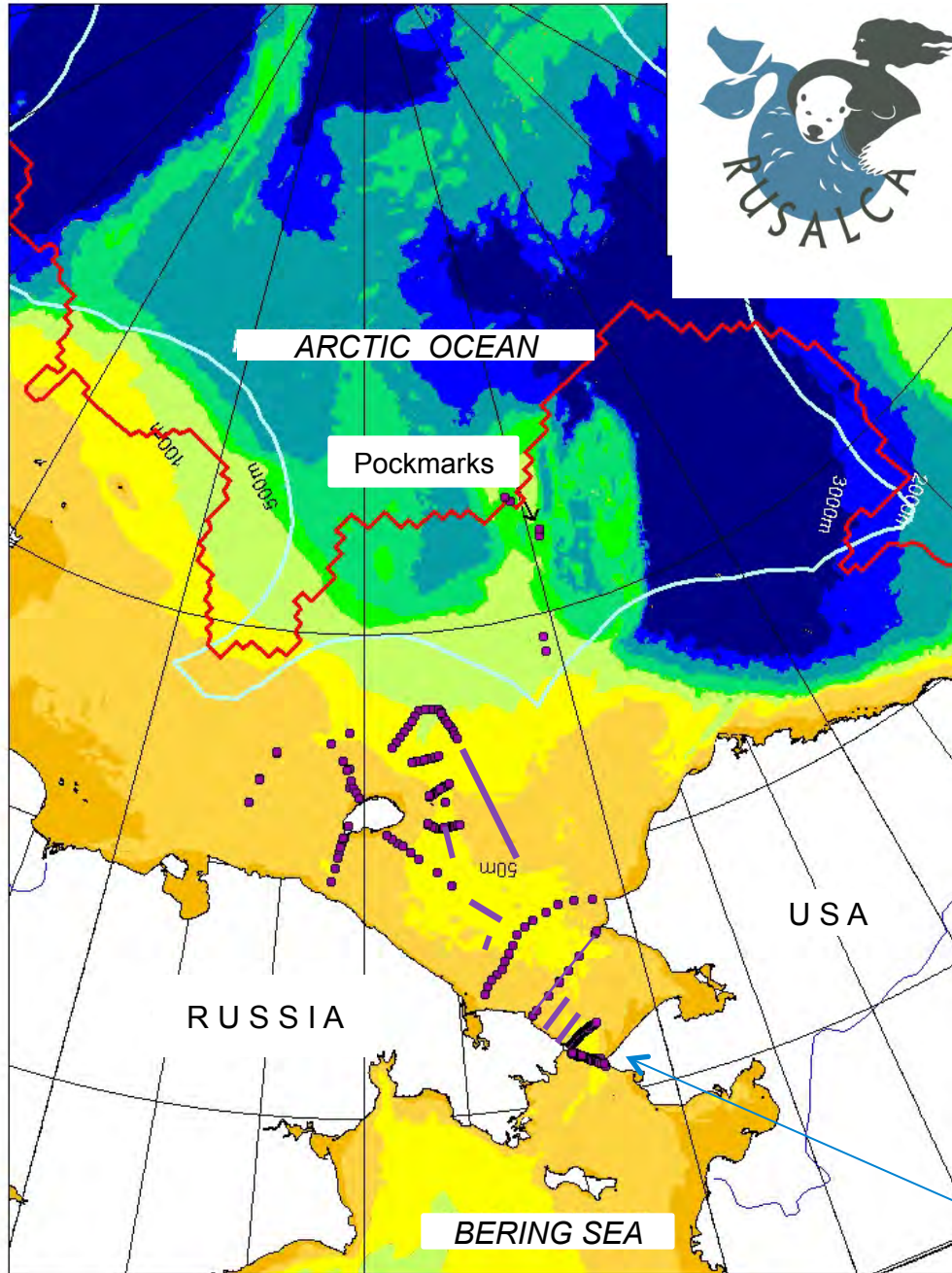


RUSALCA 2014: July 8-17, 2014



Aleksey Ostrovskiy and Kathleen Crane

RUSALCA STATIONS 2004-2014



Oceanic fluxes of volume and heat through the Bering Strait increased by ~50% between 2001 and 2011

Bering Strait

RUSALCA 2014, Anadyr - Anadyr



- Redeploy a mooring into the Western Bering Strait; reconnect the monitoring chain
- Carry out Physical and Chemical transects of the Bering Strait, the DBO line 3 and the CS Lines



Transport 1 Bering Air Charter,
Nome to Anadyr



Leaving Nome



Transport 2 Arrival in Anadyr

“Personal” Gear
Makes it
Out of Customs



At the Dock in Anadyr



Transport 3

Ferry to Anadyr City



Transport 4 Anadyr Port



Transport 5 Barge to Ship



The scientists on board the R/V Khromov for the 2014 operations were:

Vladimir Bakmutov, Chief of Expedition, GNINGI, MTB, (*Vessel support*)

Kathleen Crane U.S. Mission Coordinator of RUSALCA, NOAA

Aleksey Ostrovskiy, Russian Mission Coordinator of RUSALCA, Alliance Group

William Floering, PMEL, NOAA (*mooring technician*)

Elizabeth Labunsky, U.S. Fish and Wildlife Service, (Seabird Observations)

Calvin Mordy, University of Washington, PMEL, NOAA, Water Samples (*productivity, nutrients, chemistry*)

Yuri Paschenko, Far Eastern Branch of Roshydromet (deck operations)

Maria Pisareva, Woods Hole Oceanographic Institution and P. P. Shirshov Institution of Oceanology, (*Physical Oceanography*)

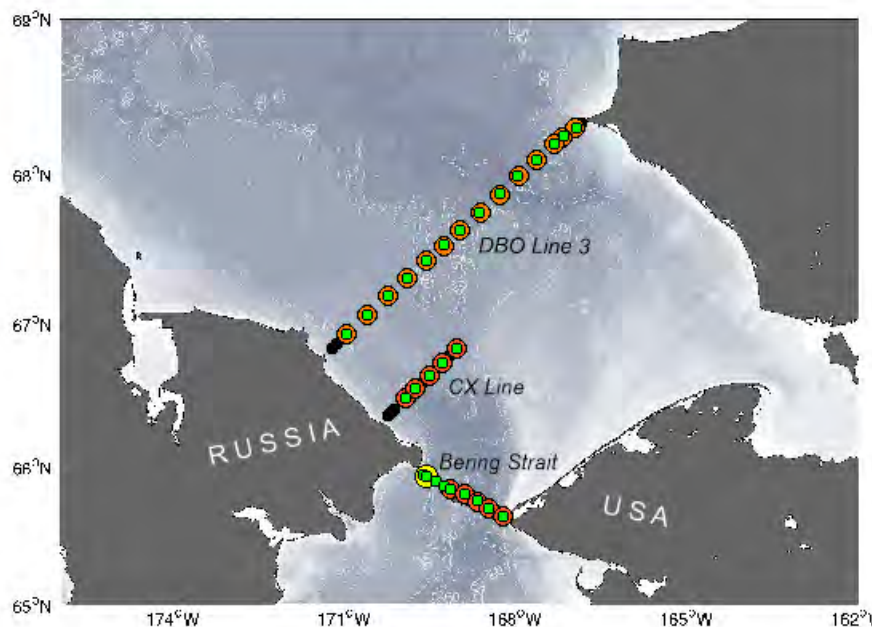
Alexander Polshin, MTB, (vessel support and instrument tech operations)

Kathleen Stafford, University of Washington, (*Marine Mammal Observations, and mooring operations*)

Kevin Wood, University of Washington, PMEL, NOAA (*Logistics and all around support*)



RUSALCA STATIONS 2014



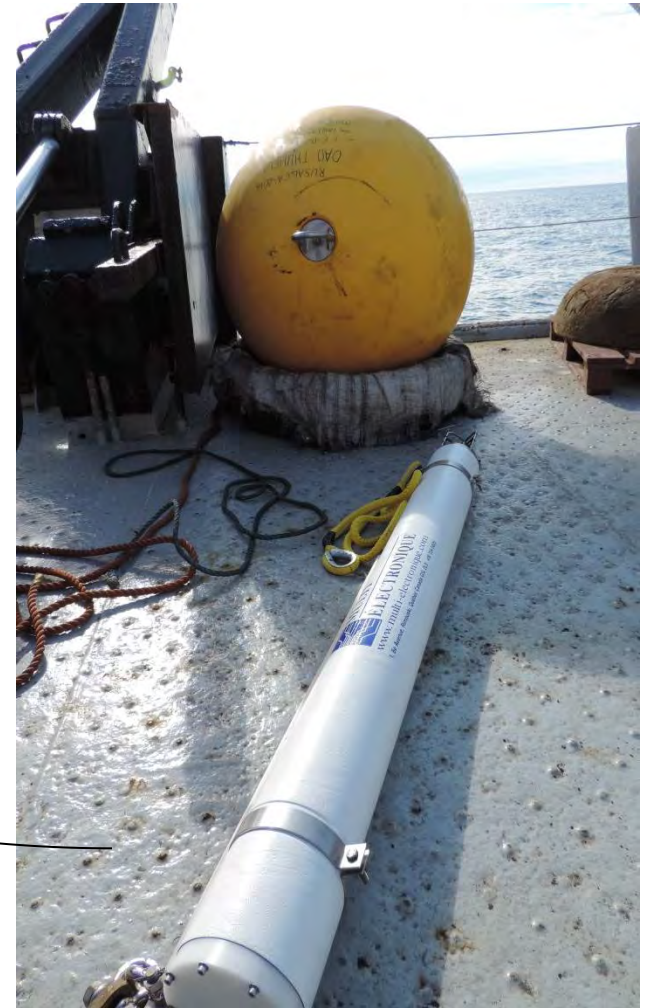
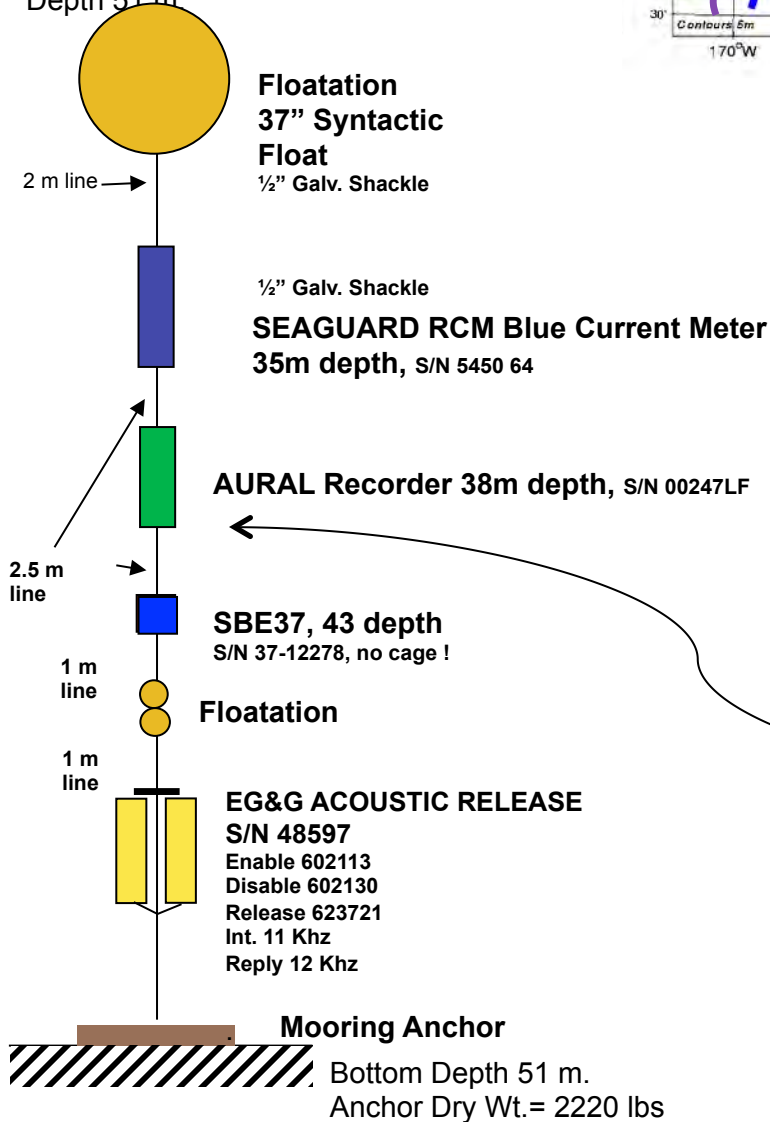
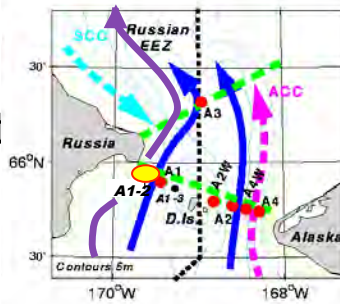
- Mooring, 2014
- Bottle Samples
- CTD
- Unsampled 2010 Stations

RUSALCA 2014
depth in meters

RUSALCA 2014 Mooring

A1-2 – RUSSIAN Territorial Wat

Latitude 65° 55.994'N
 Longitude -169° 36.990'W
 Depth 51 m



Russia

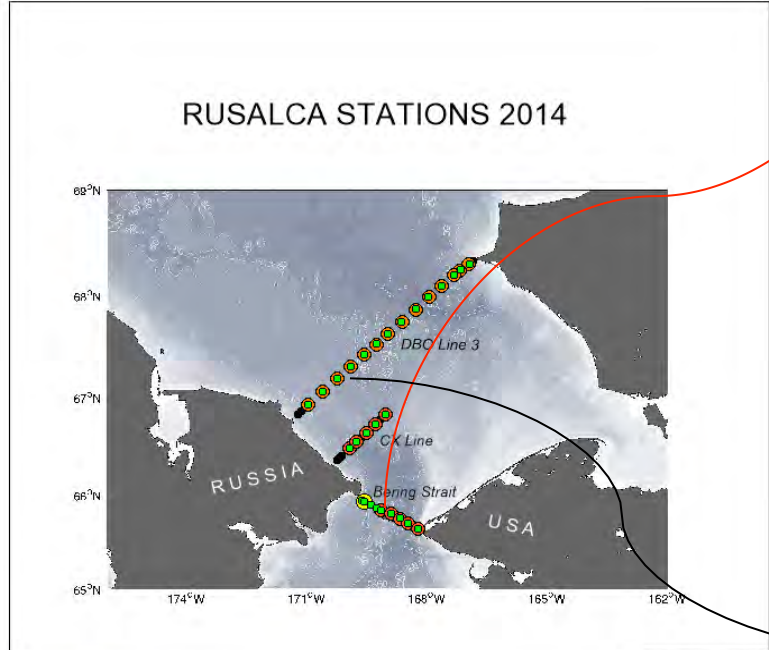
Bering Strait Line

USA

T

S

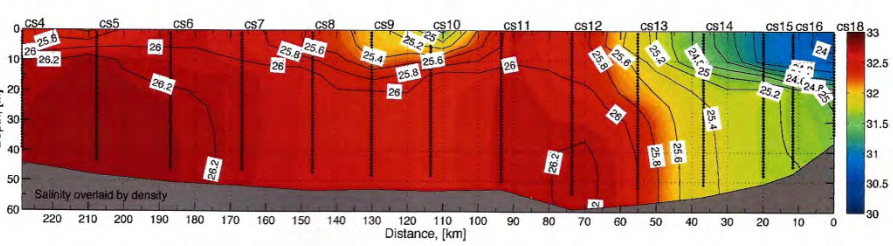
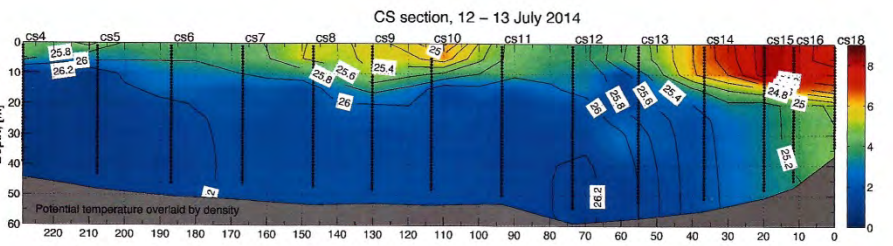
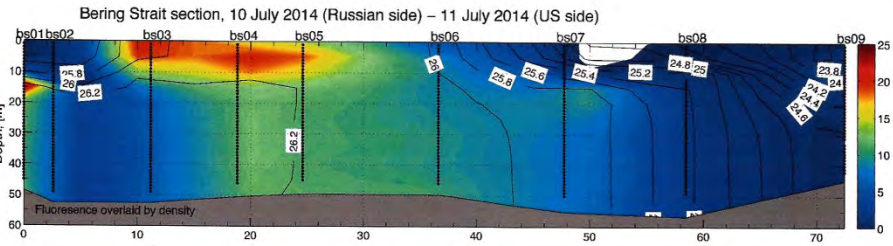
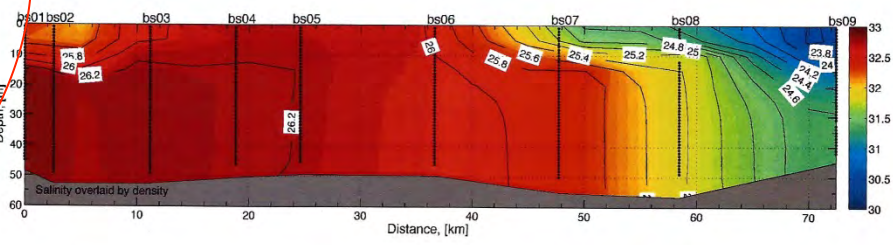
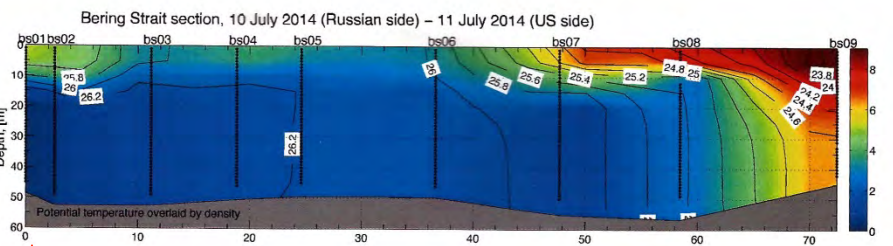
F



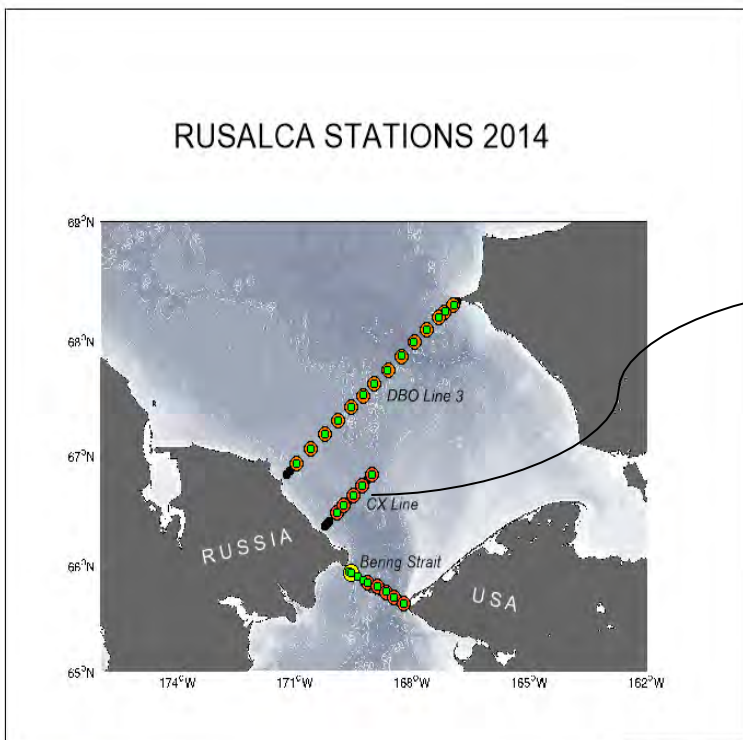
- Mooring, 2014
- Bottle Samples
- CTD
- Unsampled 2010 Stations

RUSALCA 2014 depth in meters

CS-DBO3 Line

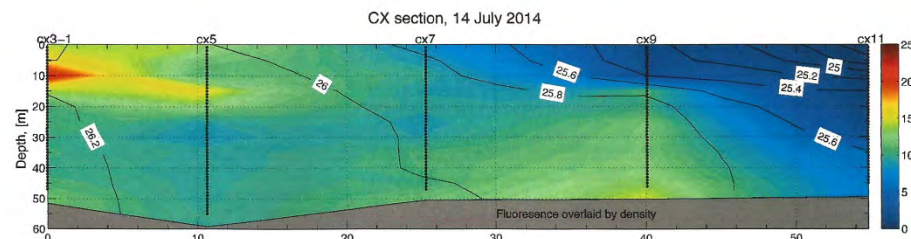
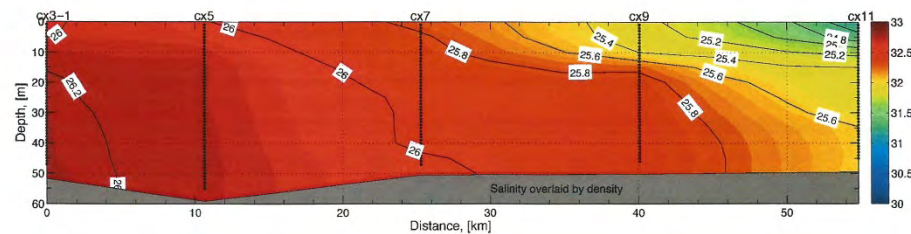
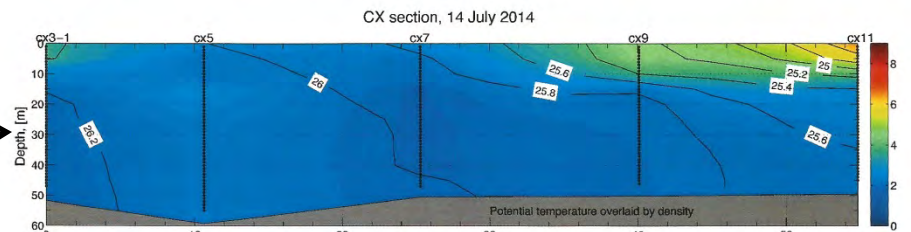
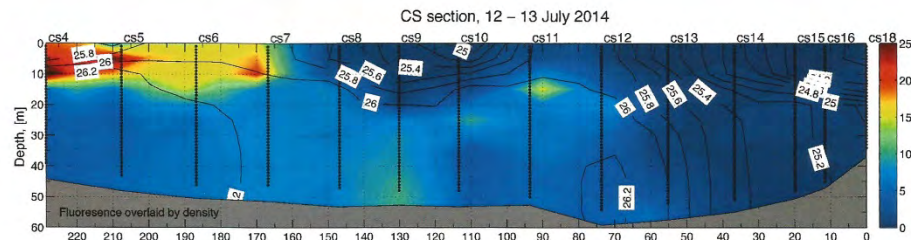


CS DBO3



- Mooring, 2014
- Bottle Samples
- CTD
- Unsampled 2010 Stations

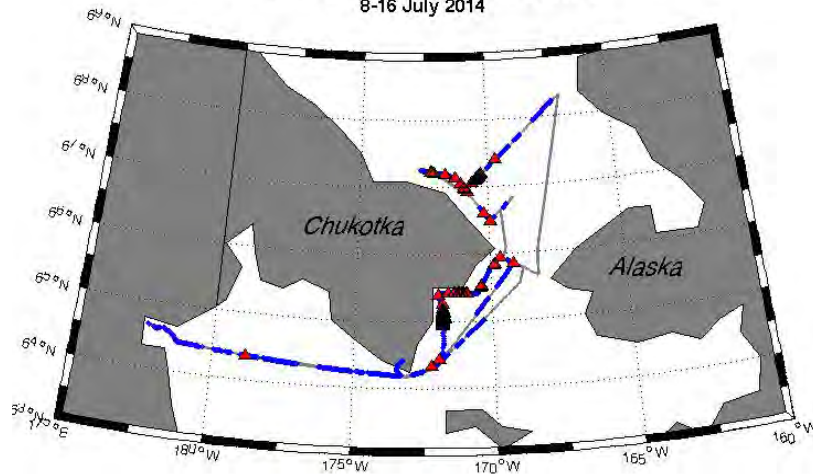
RUSALCA 2014
depth in meters



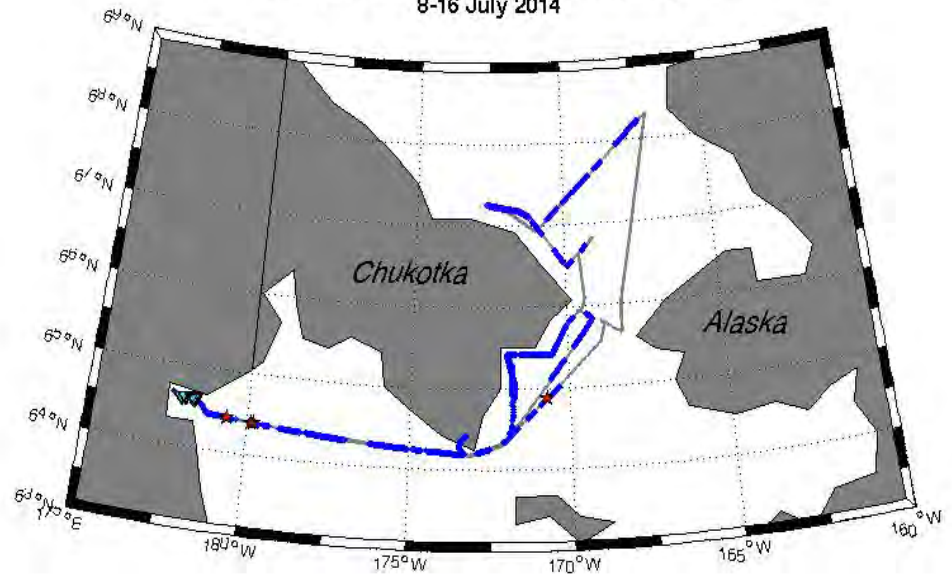
CX Line

Gray, Orca, Beluga, Humpback and Minke Whales

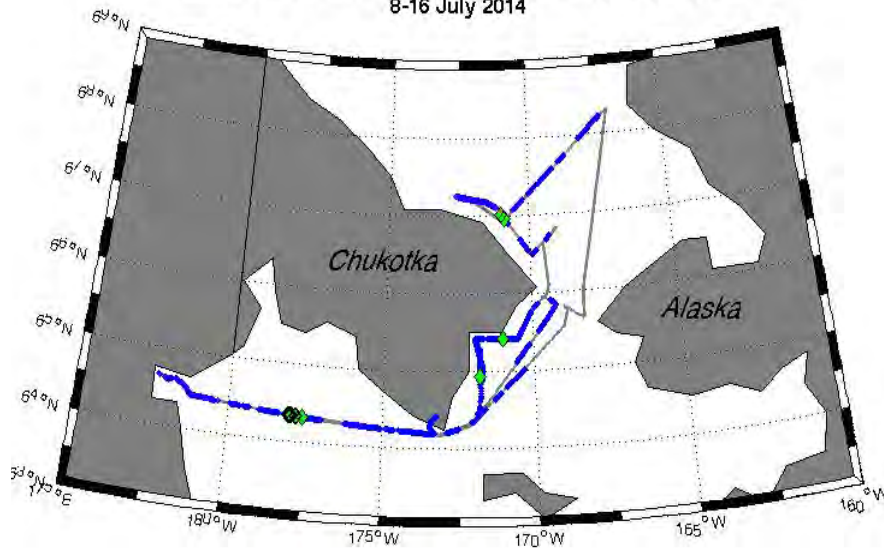
Rusalca 2014 gray whale sightings (red)
8-16 July 2014



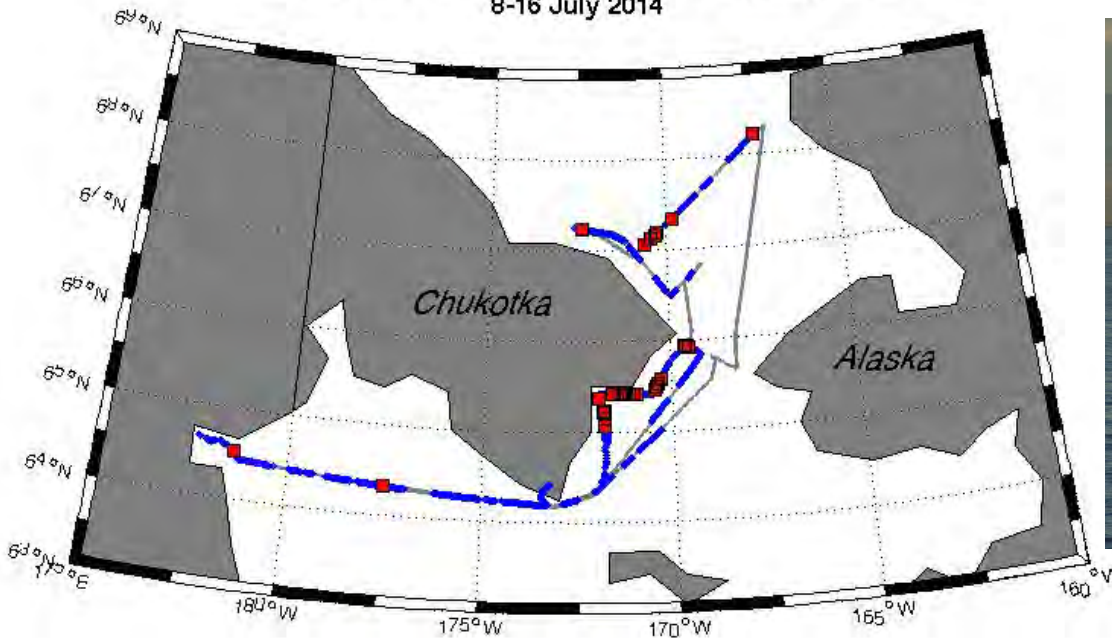
Rusalca 2014 orca (red) and beluga sightings (blue)
8-16 July 2014



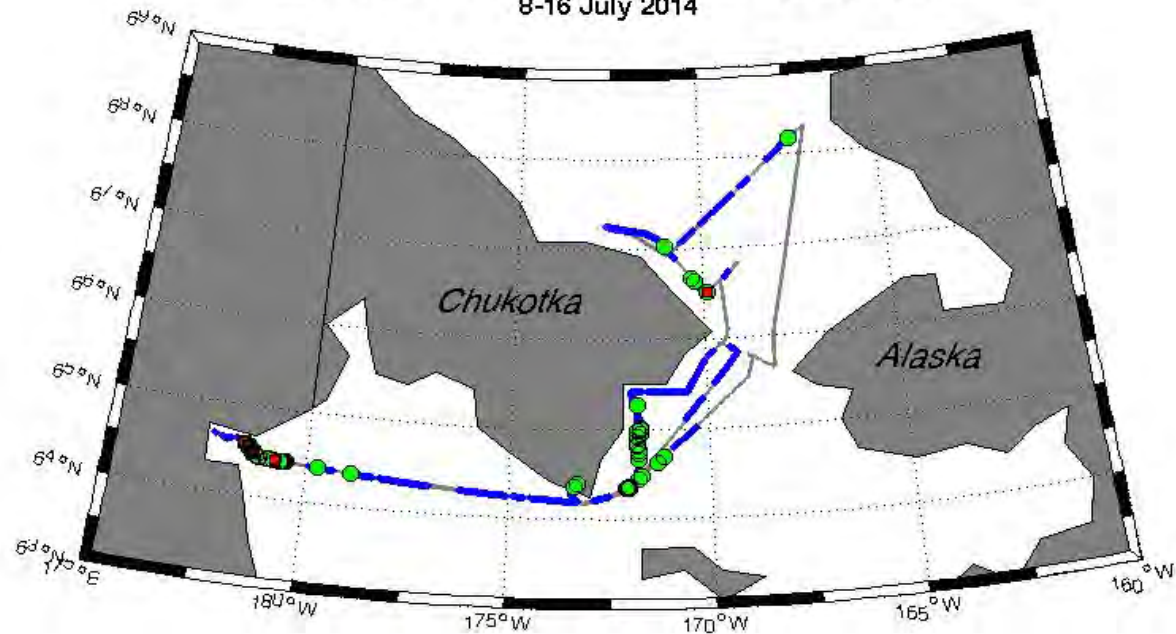
Rusalca 2014 humpback and minke whale sightings (green)
8-16 July 2014



Rusalca 2014 unidentified large whale sightings (red)
8-16 July 2014



Rusalca 2014 walrus (red) and phocid sightings (green)
8-16 July 2014

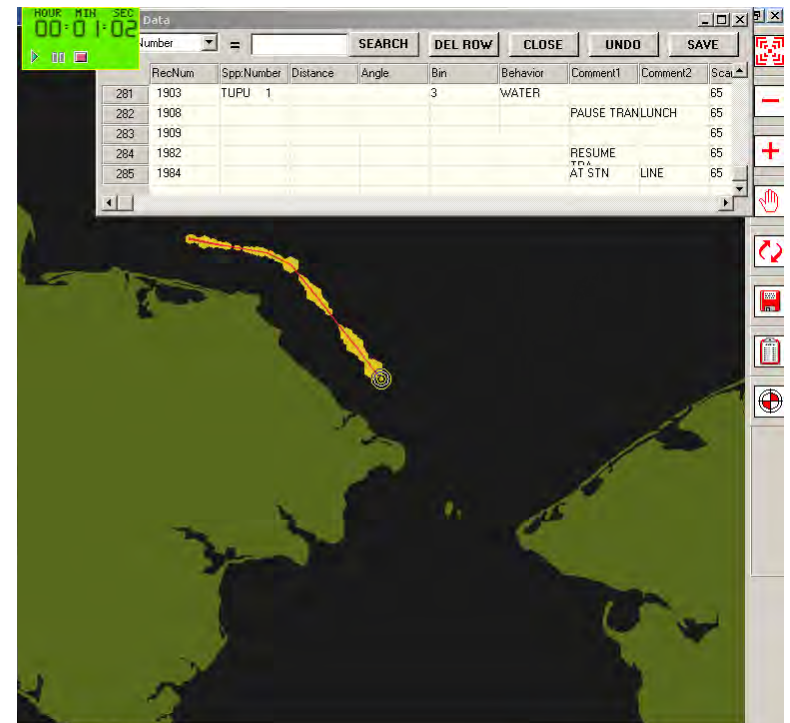


Large Unidentified Whales, Walrus and Phocids

Of special interest 10 Kittlitz's murrelets were observed during this survey. The Kittlitz's murrelet is an *Alcidae* species that is only found in Russian and Alaskan waters. The population of Kittlitz's murrelets has been in recent decline and has prompted conservation concern. Russia has listed the species as critically endangered, and in the U.S. the species is considered threatened. We were able to collect valuable near shore and offshore distribution information on this species during this RUSALA cruise.

Screen capture of the survey's northern extent during RUSALCA 2014. Red line indicates transect surveyed, yellow dots depict the number of birds observed.

SEABIRDS



А К Т

записи первичных океанографических данных, полученных в экспедиции
«Русалка-2014» с использованием CTD-зонда SBE-19plus Seacat

«17» июля 2014 г.

п. Анадырь

В Соответствии с Разрешением Минобрнауки России от 23 апреля 2014 г. №40 заявителем морских научных исследований – АНО «Морские технологии и безопасность» – на борту НИС «Профессор Хромов» была произведена запись на CD информации, полученной с помощью датчиков, установленных на CTD-зонде SBE-19plus Seacat, как указано ниже:

Диск RUSALCA 2014 Rus_Data CTD, содержащий:

Папка Rus_Data, объем 2089 Кб

Папка seasave_printscreen объем 3156 Кб

Папка station_logsheets объем 4193 Кб

Файл station_list.xlsx объем 47 Кб

Файлы данных скопированы на носители информации АНО «Морские технологии и безопасность» в четырёх экземплярах. После копирования информации первичные данные CTD удалены из модулей памяти CTD-зонда, использованного для получения данных.

Начальник экспедиции

 В.Бахмутов

Представитель NOAA

 K.Crane

Представитель «Группы Альянс»

 А.Островский

 М.Тисарева



Bering Strait Protocol
is signed

