

Possibility to establishing a new DBO line in Northern Barents Sea

Lis Lindal Jørgensen
Institute of Marine Research (IMR)
Tromsø, Norway

Pacific Arctic Group open meeting
28-29 Oct 2014

NOAA/Pacific Marine Environmental Laboratory in Seattle, Washington, USA



IMR

Governmental institution (staff of 750)

Work within: Marine ecosystem **management**, marine **resources**, marine **environment**, and aquaculture.

Objectives: scientific **advice** and **research**

Vision: **sustainable management** of living marine resources, aquaculture and the environment



**Greetings from my new Barents
Sea Program leader**

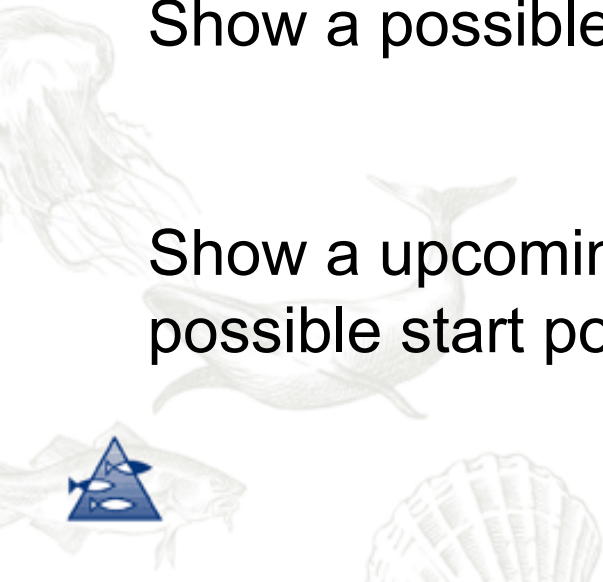


My goal here

Inform about the annual joint Norwegian-Russian
Barents Sea Ecosystem Survey

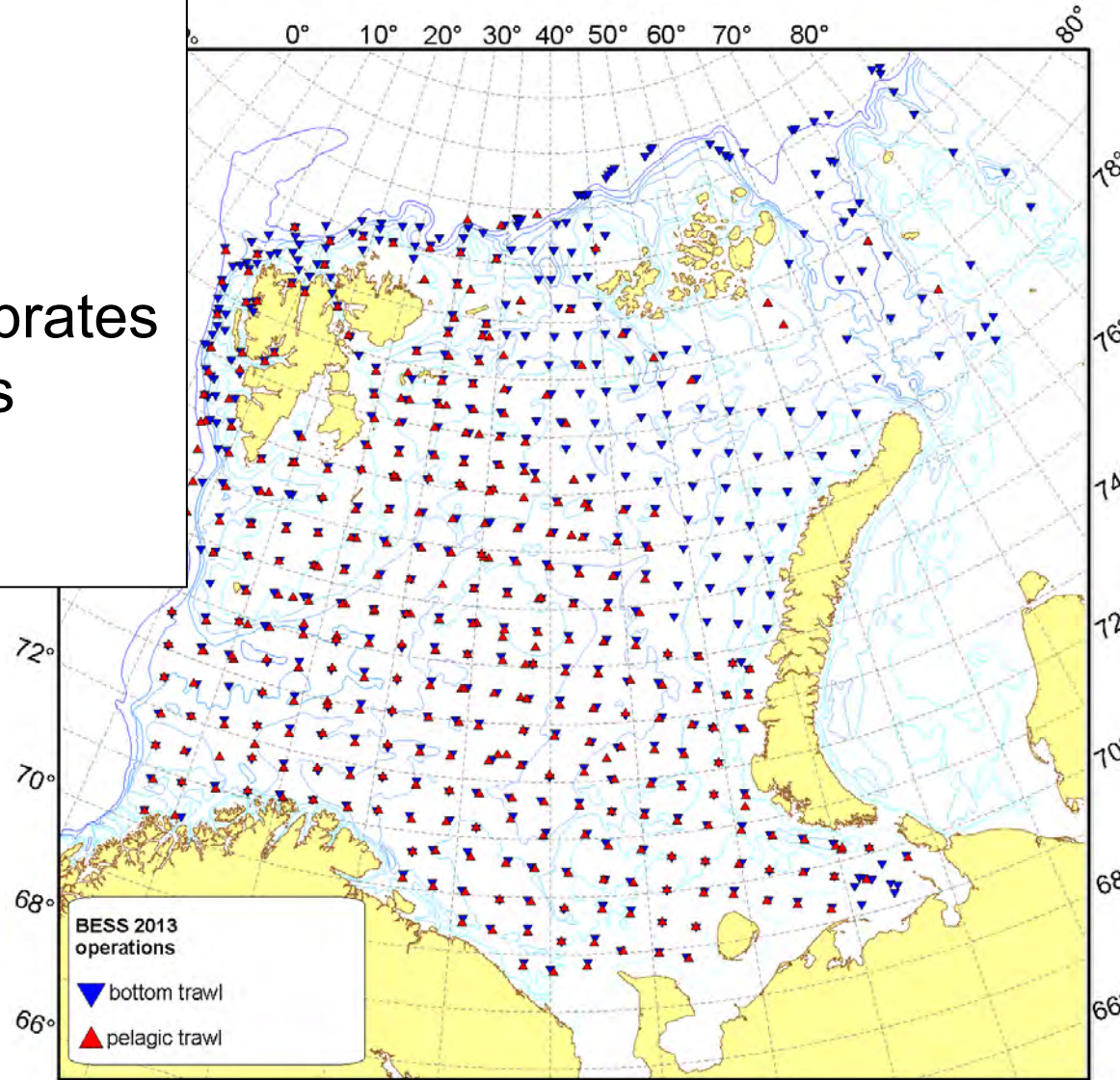
Show a possible position of a Northern Barents Sea DBO

Show a upcoming announcement for a post-doc (and possible start point “DBO”)



Barents Sea annual Ecosystem survey ~Station grid

- CTD
- Nutrients
- Phytoplankton
- Zooplankton
- Pelagic fish and invertebrates
- Bottom fish and benthos
- Mammals, birds
- Pollution



The screenshot shows the website for the Institute of Marine Research (IMR). The header features the IMR logo and the text "INSTITUTE OF MARINE RESEARCH HAVFORSKNINGSINSTITUTTET". A navigation menu includes "Front page", "Research", "Topics", "Management advice", "Cruises", "About the Institute of Marine Research", "Publications", and "Vacancies". Below this, a secondary menu lists "Research data", "Centre for Development Cooperation in Fisheries", "Programmes", "Projects", and "Research groups". A search bar is located on the right side of the page.

The main content area is titled "You are here: [Front page](#) > [Research](#) > Research data". It features a sidebar with the following sections:

- Sjømil**: SJØMIL is a database for aggregated time series from Norwegian waters useful for marine sciences. It contains data series on climate and commercial fish stocks from the IMR monitoring programme and ICES fish assessment. [Sjømil](#)
- MAREANO - the Sea in Maps and Picture**: MAREANO maps depth and topography, sediment composition, biodiversity, habitats and biotopes as well as pollution in the seabed in Norwegian coastal and offshore regions. MAREANO is coordinated by the Institute of Marine Research, in collaboration with the Geological Survey of Norway and the Norwegian Hydrographic Service. [MAREANO - the Sea in Maps and Picture](#)
- Fixed hydrographic stations**

The main content area also includes a "Research data" section with the following text:

Research data

The Institute of Marine Research continuously collects large amounts of data from all Norwegian seas. Data are collected using vessels, observation buoys, manual measurements, gliders – amongst others.

The Norwegian Marine Data Centre was established as a national data centre for handling of marine environmental- and fish data, and to present data products. The group's main activity is to collect secure quality and store all of the data on marine environment and

Ecosystem survey data

- Long Term Data sets
- Good for mapping
- Calculating indexes and anomalies
- Challenges:
 - Understand the links and processes
 - See the ecosystem/environment as one unit



Two Strategic Initiatives

Investigating,
among other:

Processes and interactions in food-webs

• SI Arctic = the Arctic Sea (north and west of Svalbard)

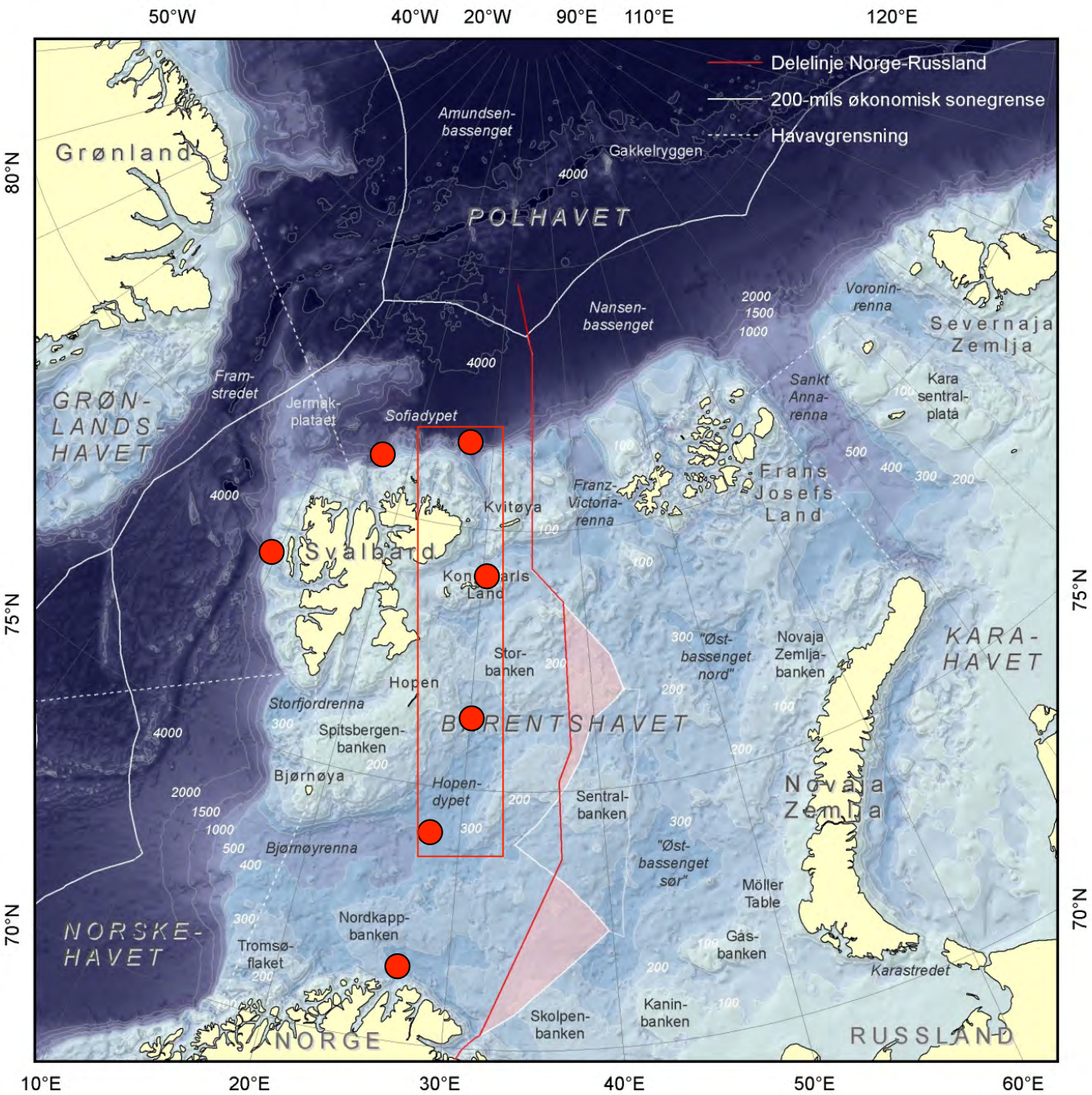
• TIBIA = Trophic interactions in the Barents Sea - steps towards an Integrated Ecosystem Assessment



WORKPACKAGE: Benthic Pelagic Coupling

- Along a transect from boreal to Arctic areas





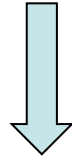
Barents Sea
DBO ?

Annual
ecosystem data
obtained

UNIS

International
(Poland,
Germany)
research
vessels

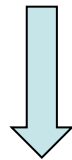
Post-Doctoral researcher



Boreal-Arctic Marine food-web ecology (stable isotopes) in the “DBO” transect

3 year (2015-2017)

IMR, Tromsø, Norway (north of the polar circle).



Possible interaction with DBO/PAG

Please contact me: lis.lindal.joergensen@imr.no

