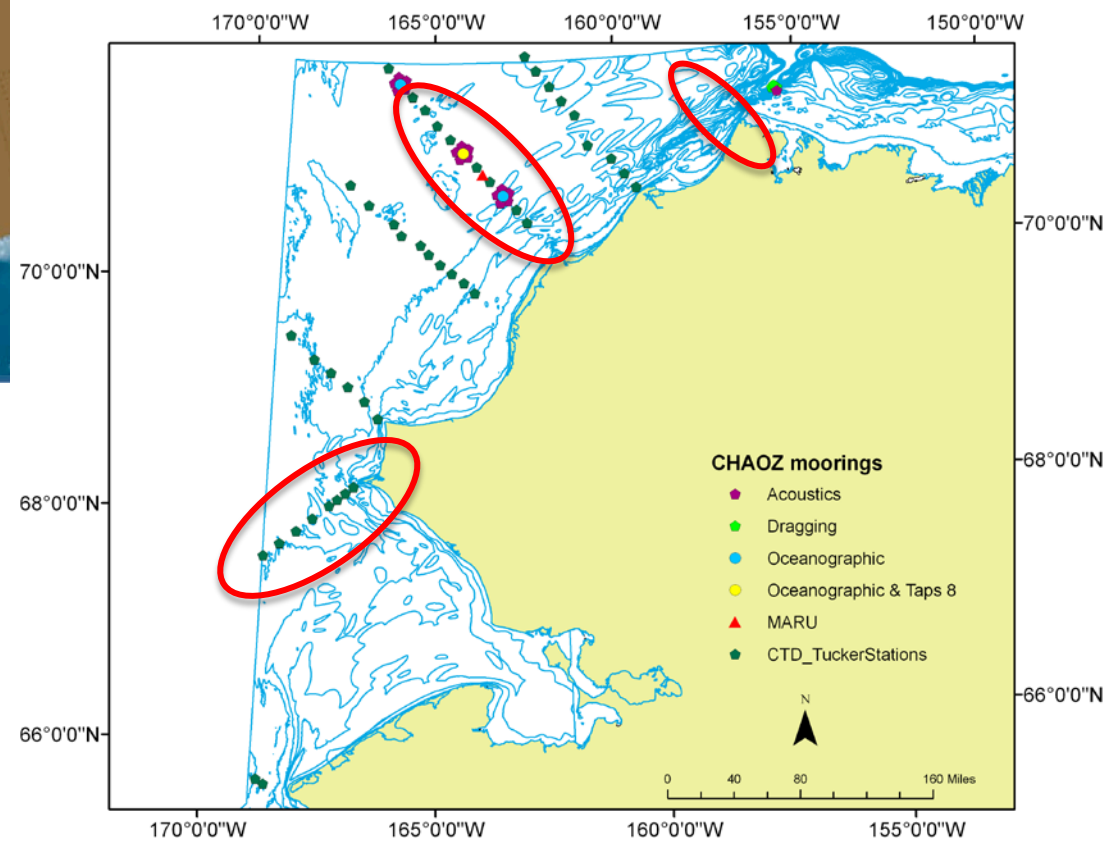
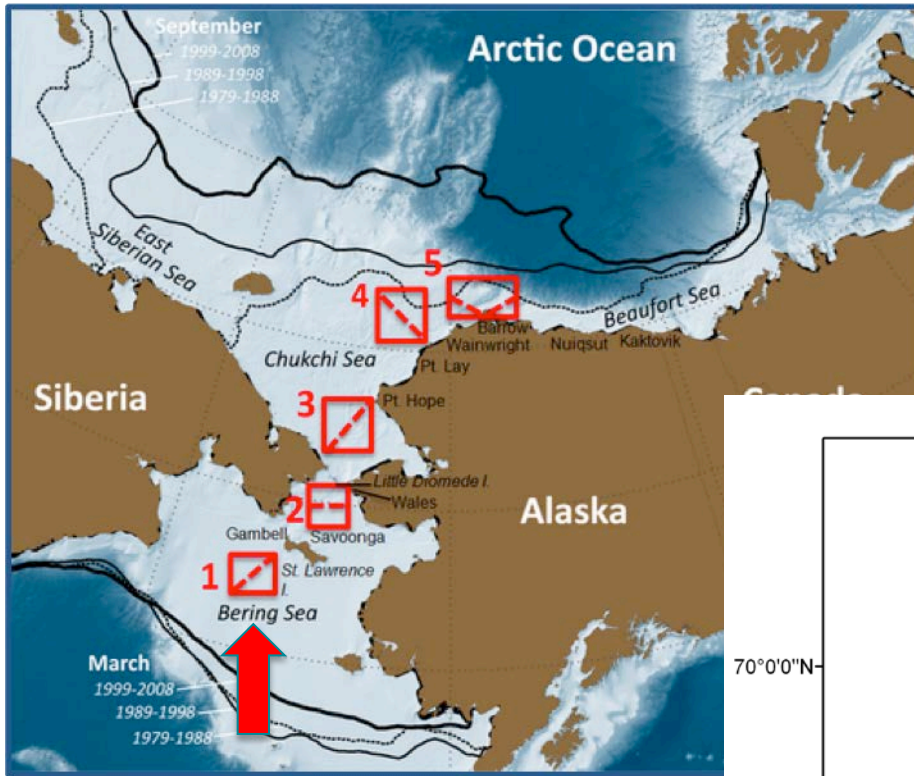
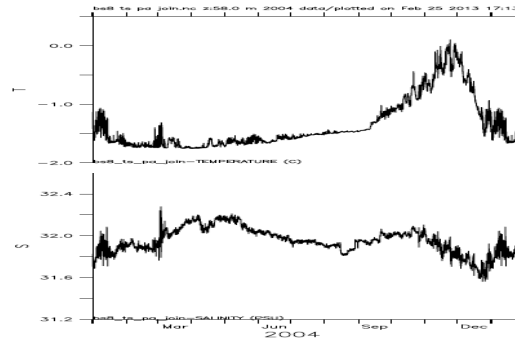


EcoFOCI and CHAOZ



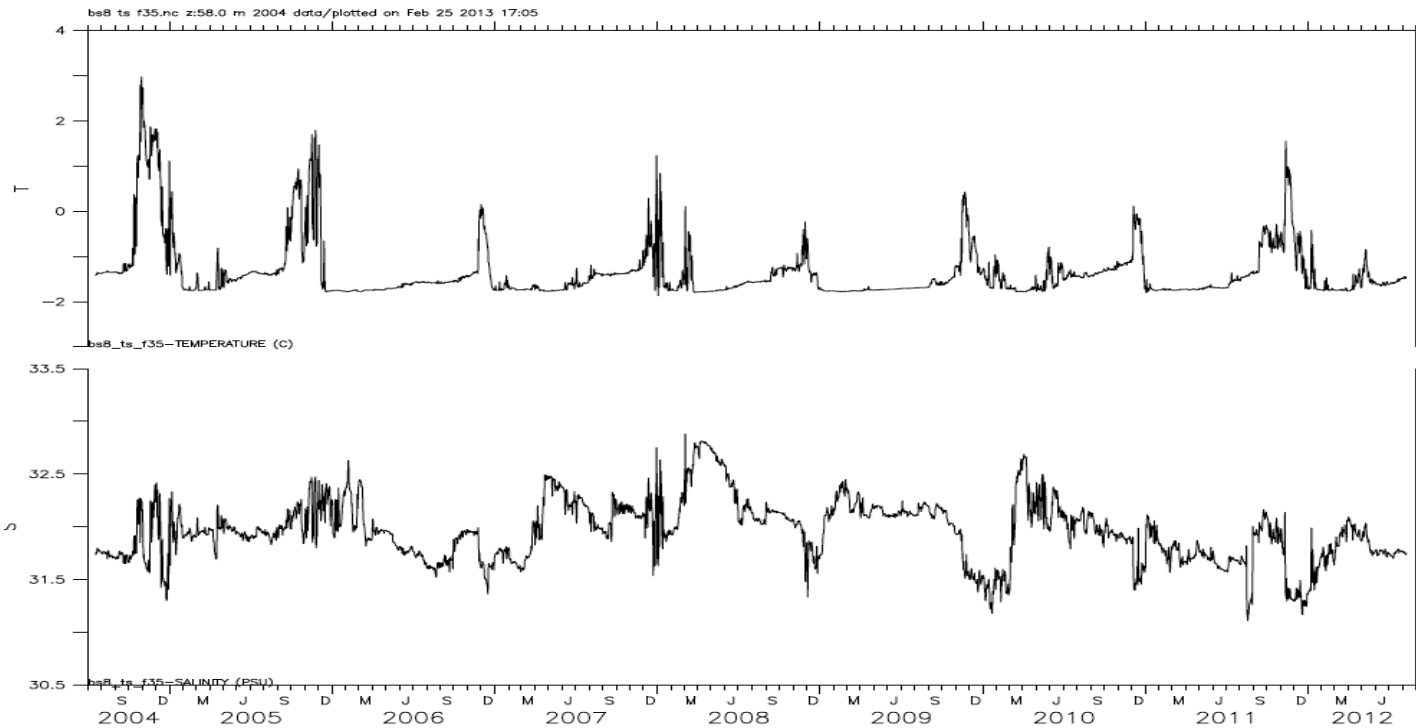
- 5. 2010 – 2012 (August)
- 4. 2010 – 2012 (August and moorings)
- 3. August 2010 - 2012
- 1. M8: 2004 - present

Northern Bering Region 1



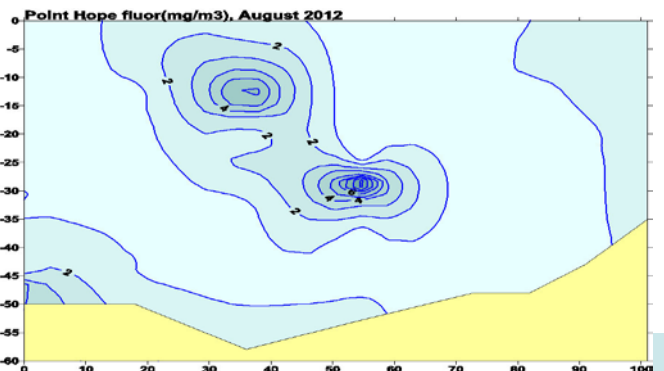
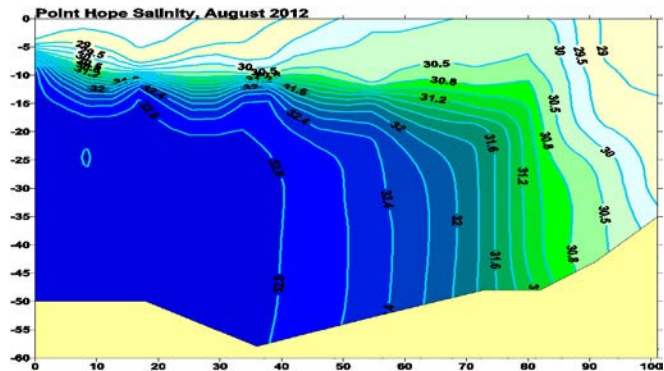
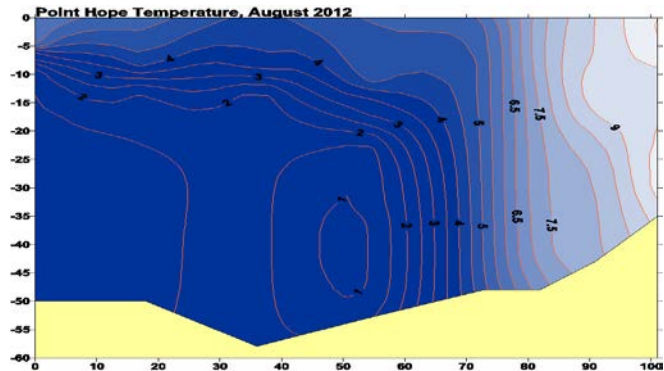
Annual signal of bottom salinity and temperature.

M8

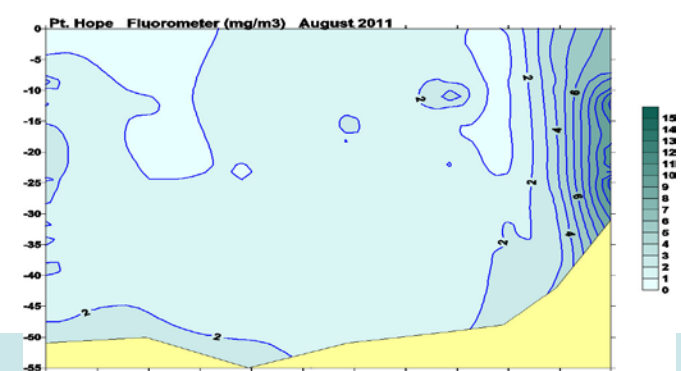
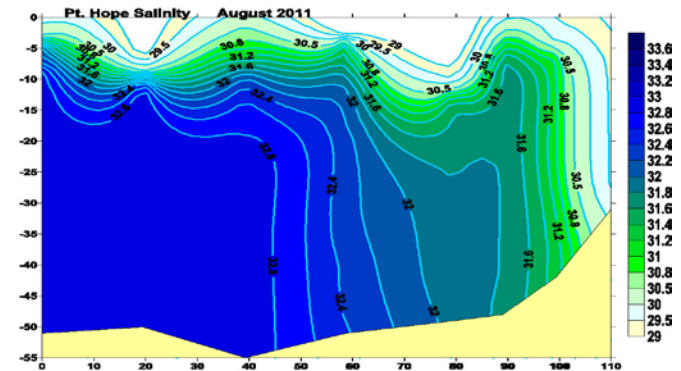
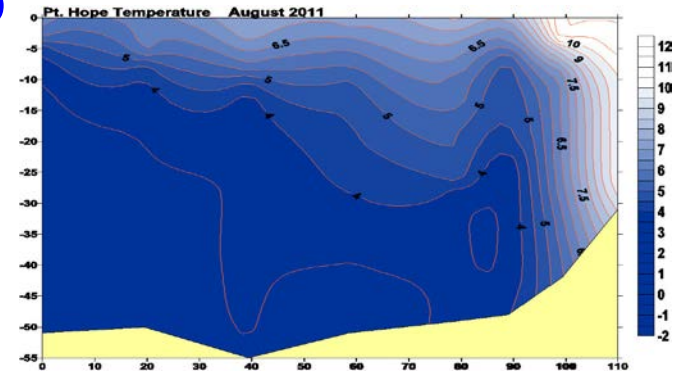


Pt. Hope Region 3

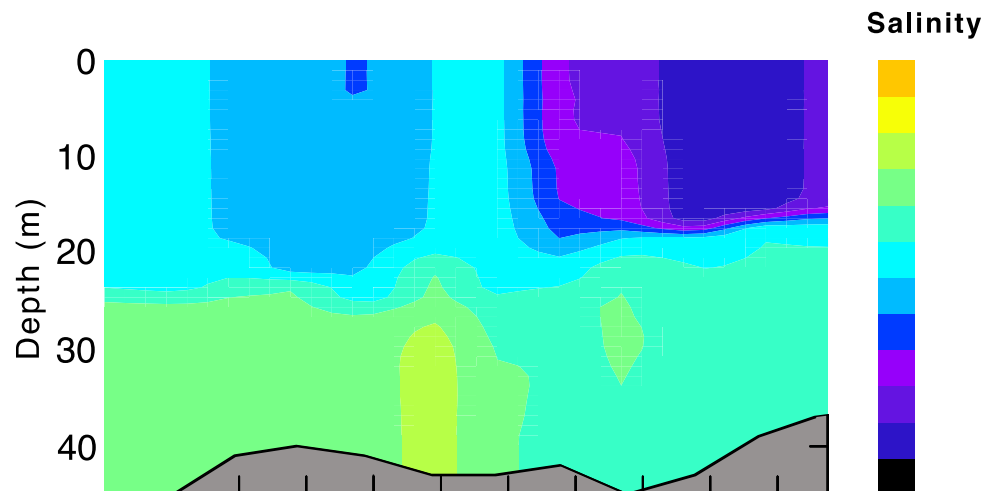
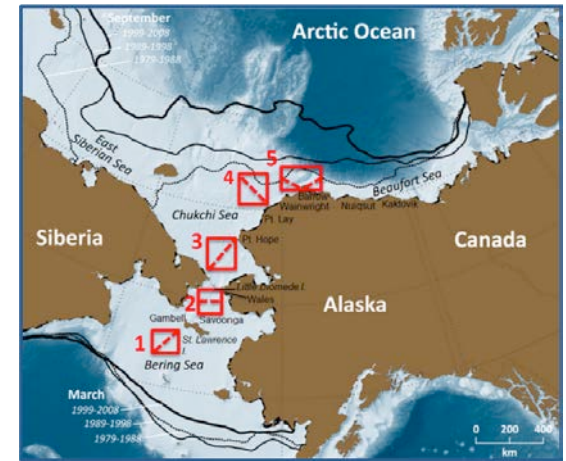
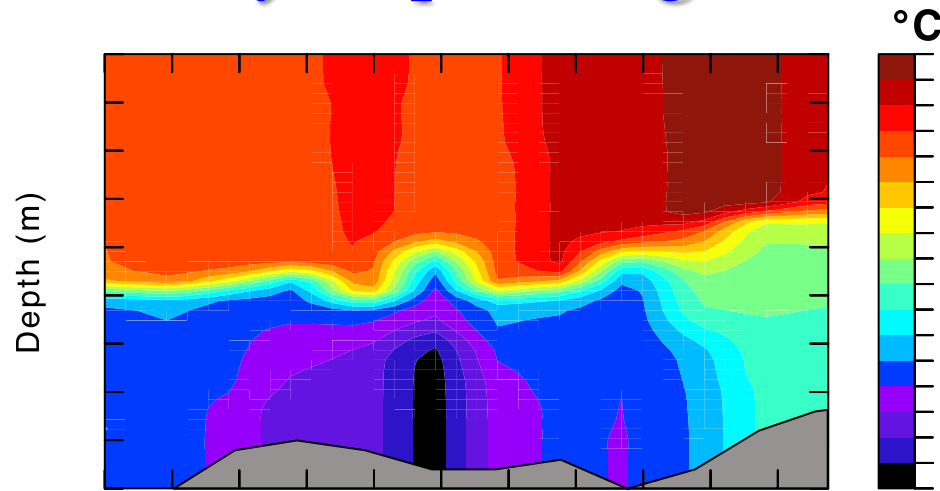
2012



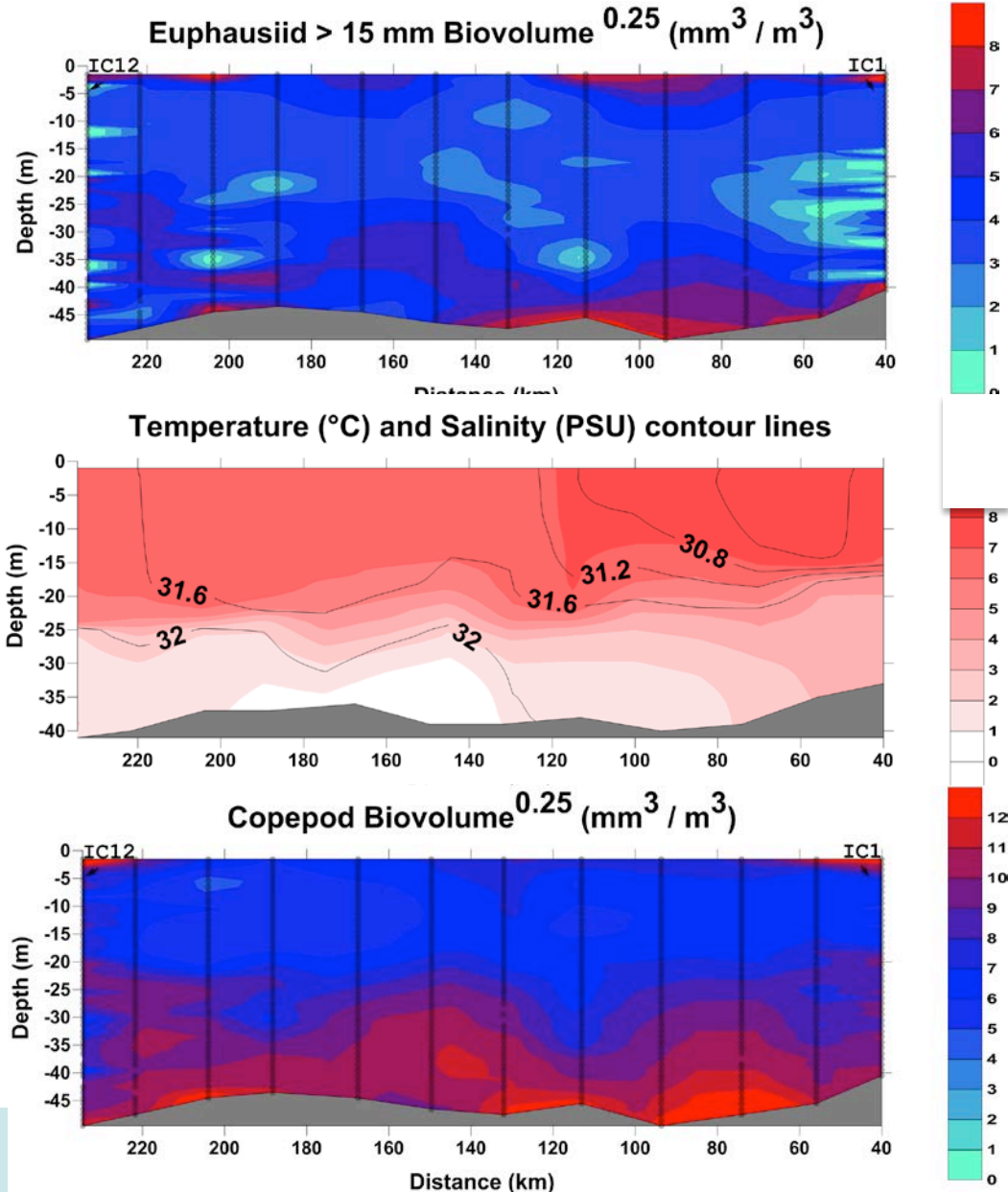
2011



Icy Cape: Region 4

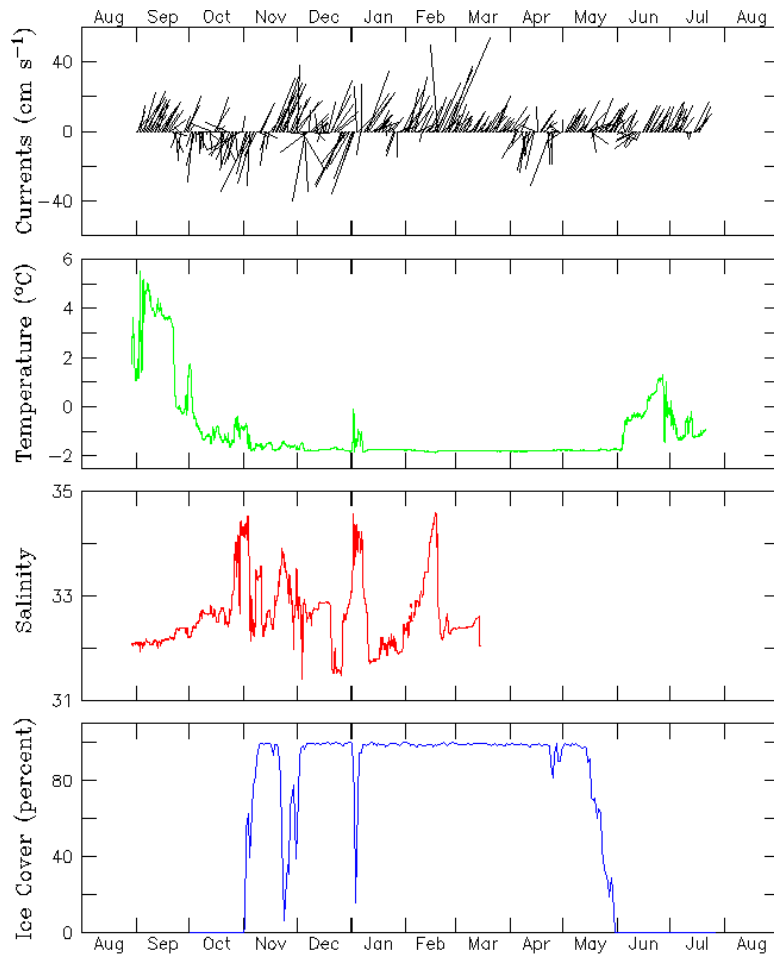
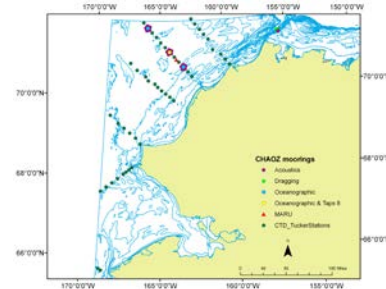


Acoustic Estimates of Biovolume

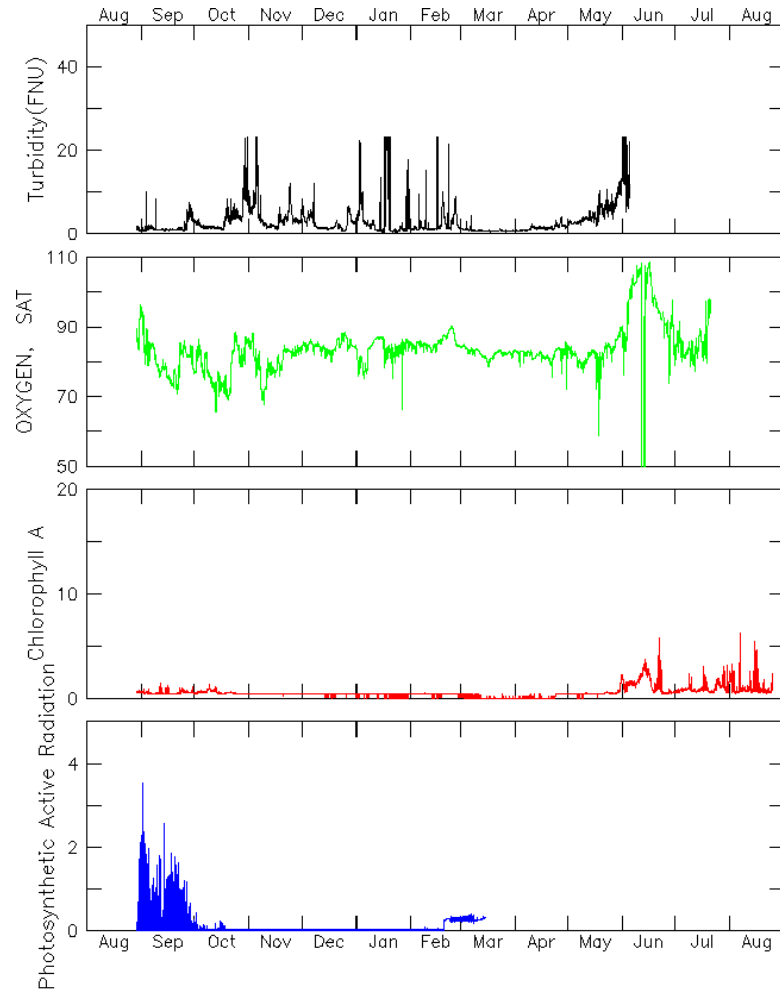


Icy Cape

Mooring Data

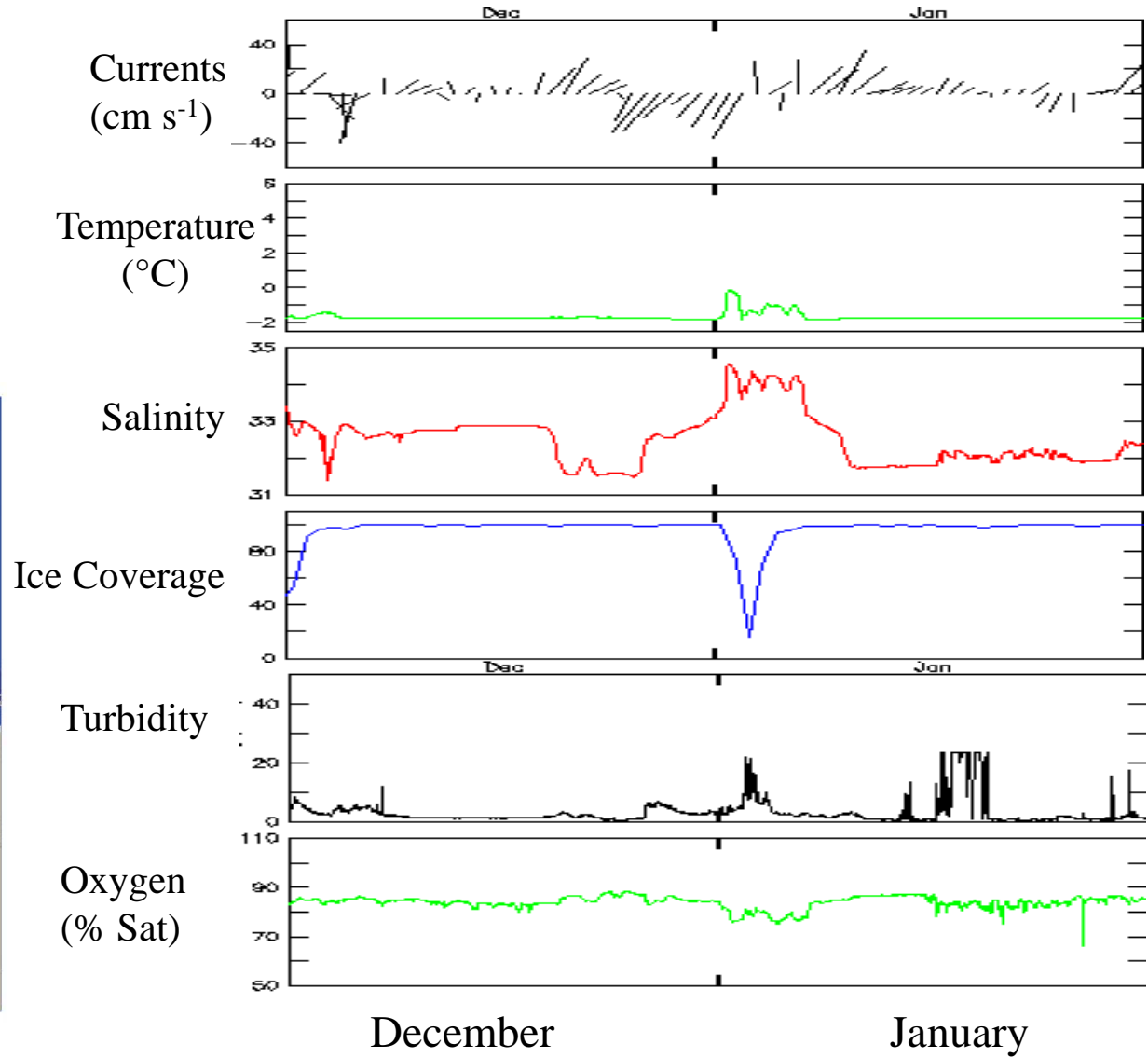
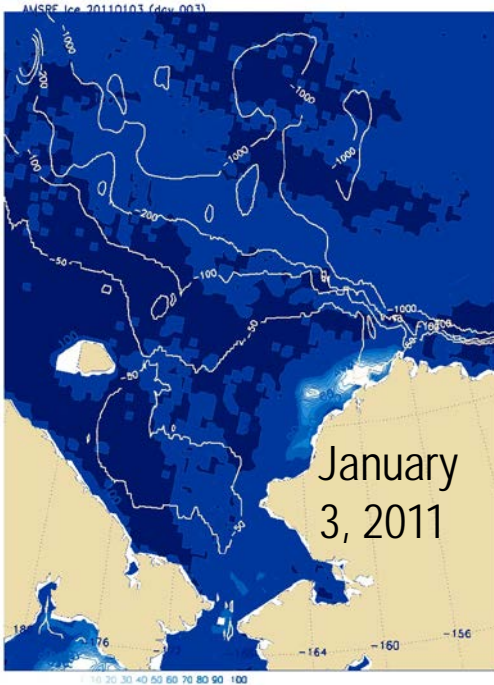


A1

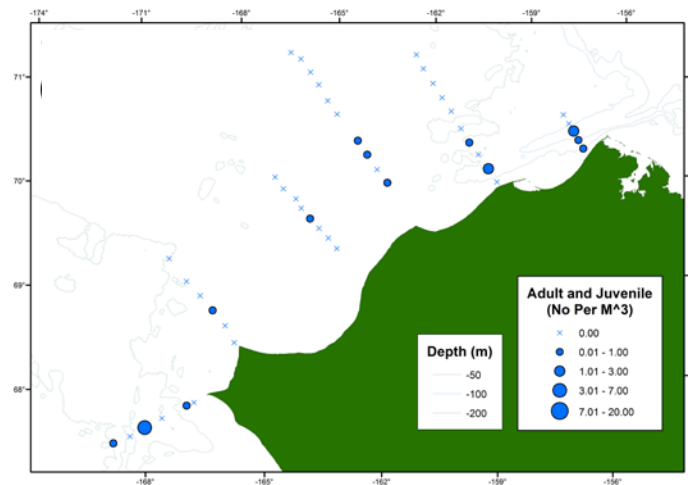
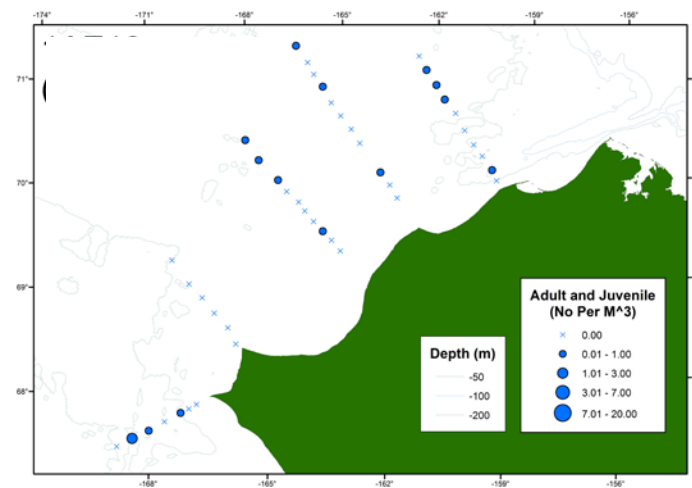
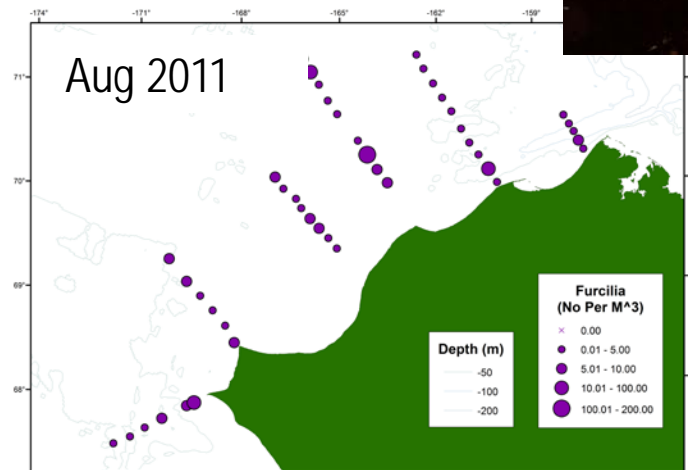
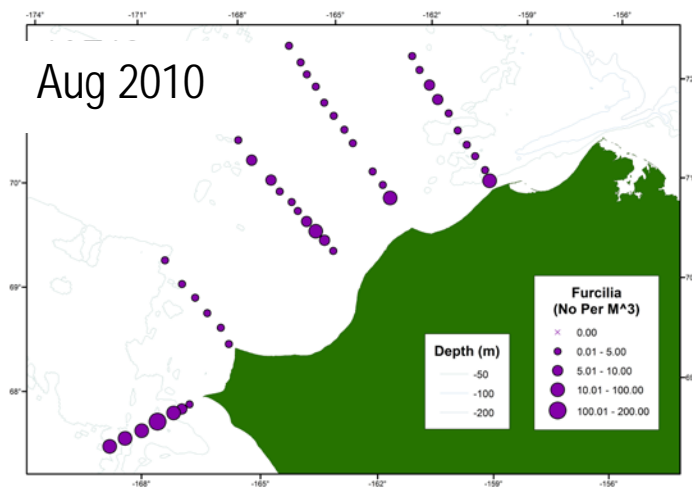


A1

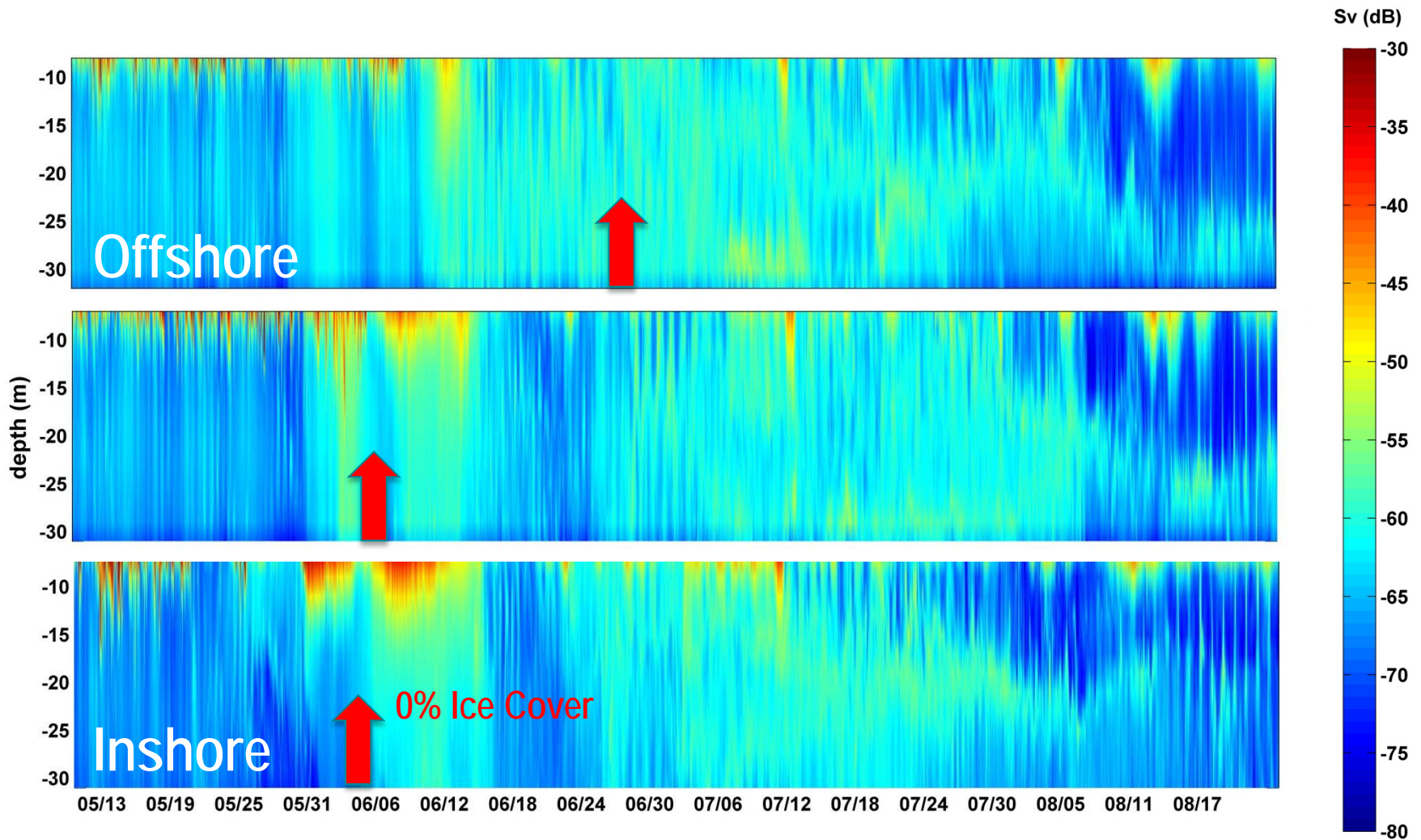
Mooring Data

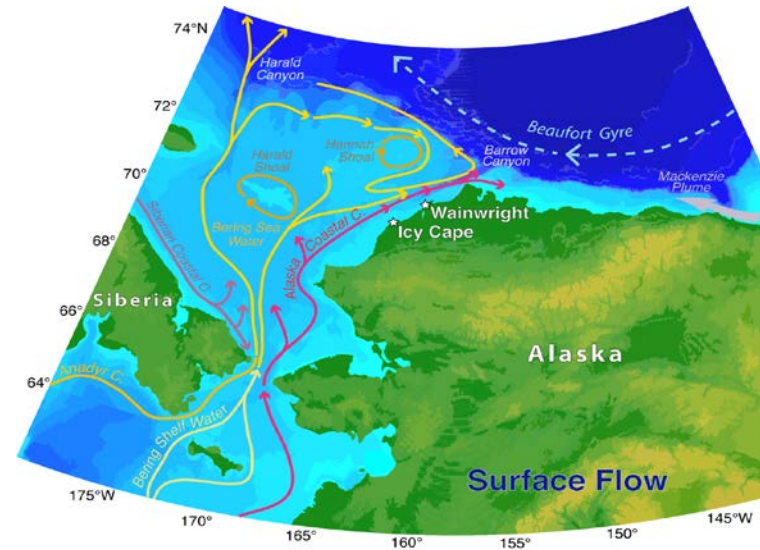


Euphausiids from Net Tows



600 KHz ADCP Volume Backscatter Data (2011)





Summary



- The project is working to integrate and synthesize climate modeling, physical and biological oceanography and marine mammal observations.
- Successfully completed our field season with summer cruises and long-term deployment of moored instruments.
- Our data are:
 1. helping to change our understanding of currents, availability of euphausiid prey and the attendance of marine mammals in the Chukchi Sea.
 2. helping to monitor change in this important region as the summer sea ice cover is reduced and the amount of open water increases.
- Please see additional CHAOZ project results in posters by
 - Kalyn MacIntyre – Bearded Seals
 - Ellen Garland – Beluga whales
 - Stephanie Grassia – Visual Observations
 - Jessica Crance -- North Pacific right whales