

*Science, Service, Stewardship*



# EcoDAAT - EcoFOCI Data Access and Analysis Tools

**Tiffany C. Vance, Kimberly Bahl,  
Debbie Blood, Colleen Harpold,  
Stephen Sontag, Matt Wilson**

NOAA

# EcoFOCI and Data

- EcoFOCI includes physical and biological studies for fisheries oceanography in the Bering, Gulf of Alaska and now Arctic
- Microcosm of DBO data and participants
- Existing separate databases for ichthyoplankton, zooplankton, chemistry, CTD data
- Creating a unified Oracle database with an ArcGIS application for data selection and analysis

# Sample and Data Types

- Oceanographic data – CTD, water chemistry, nutrients
- Biological data – zooplankton and ichthyoplankton samples, nekton samples, diet studies
- Modeling – currents, temperature, salinity, particle-tracking
- Ancillary data – station location, weather conditions, sample information

**Data Collected at Sea**

COD at Sea (haul info and sample tally)

Trawl Data → Haul Catch Length

SCS → MOA Sensors Calibrations

Water Properties → Seacat Calibration sheets CTD

Genetics sampling data Steve's length measurements

MOCNESS Sensor Calibrations



\*Separate Data (Currently Not in a Database)

Ich PPSI ← Poland ← MZ's Plankton

Zoo PPSI ← Poland ← MZ's Plankton

if UW .xls

nut—PMEL / UW

chl — AFSC Plankton Lab ← CTD Bottle salts — ship

food habits length/weight

Seattle ← Fish Invertebrates ← Nekton

otoliths ←

processed in Seattle ← Benthic grab

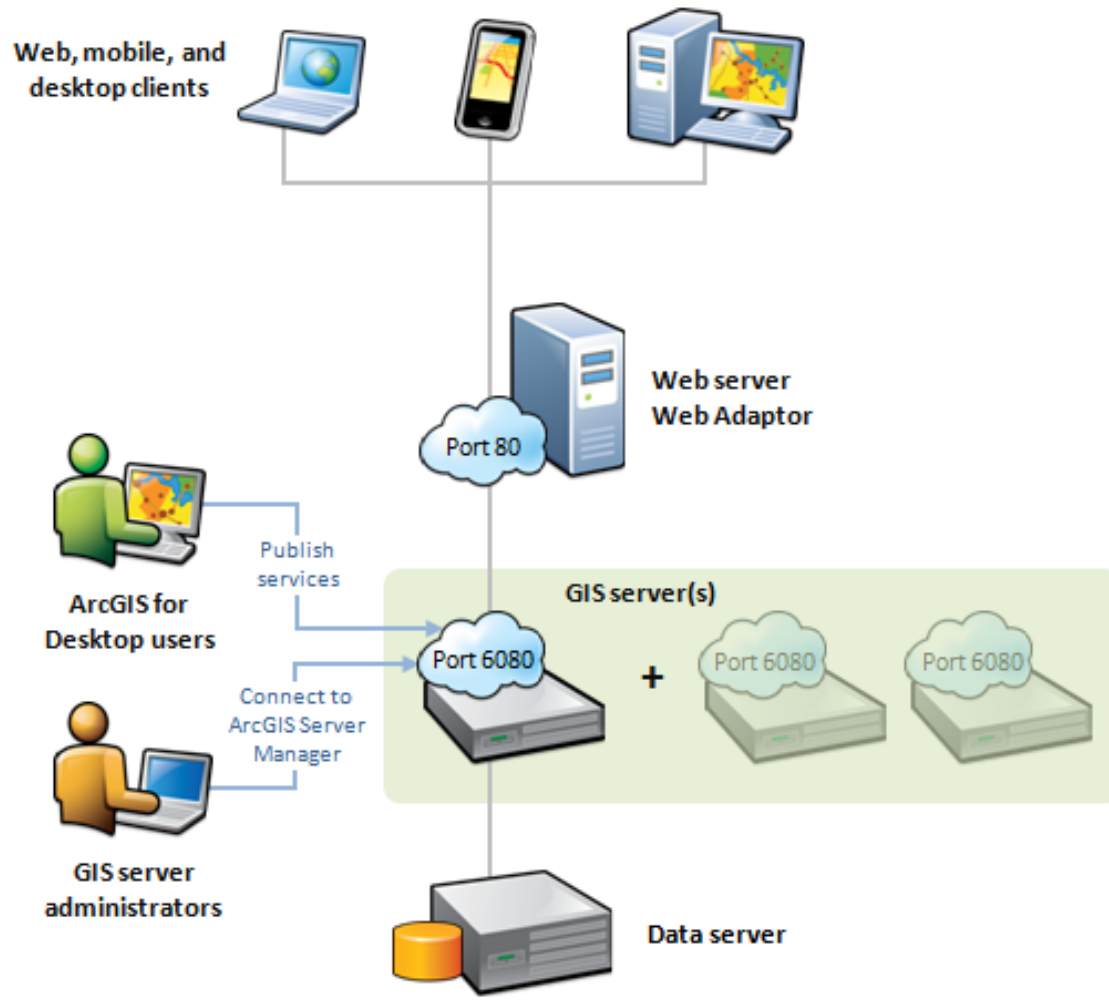
(Collected at Sea and Processed in AFSC or Poland)

**Samples**

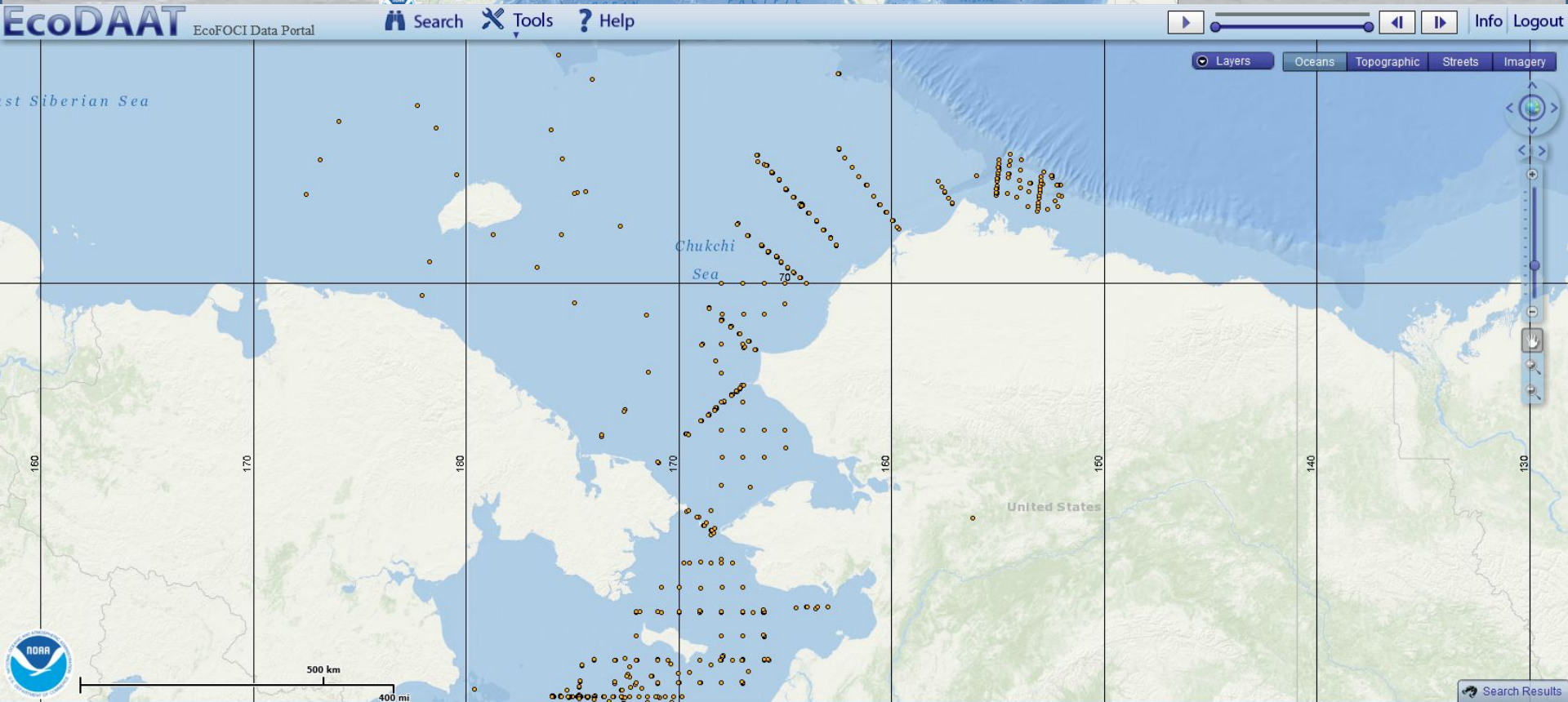
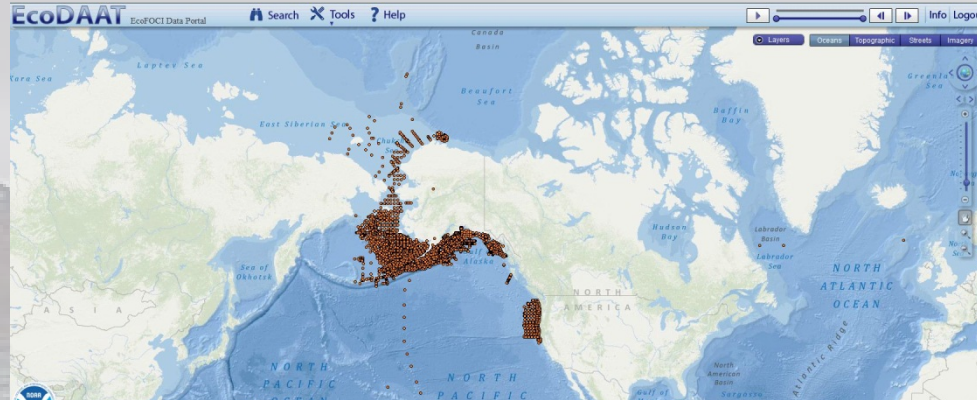


# EcoDAAT Architecture

## ArcGIS Server site architecture

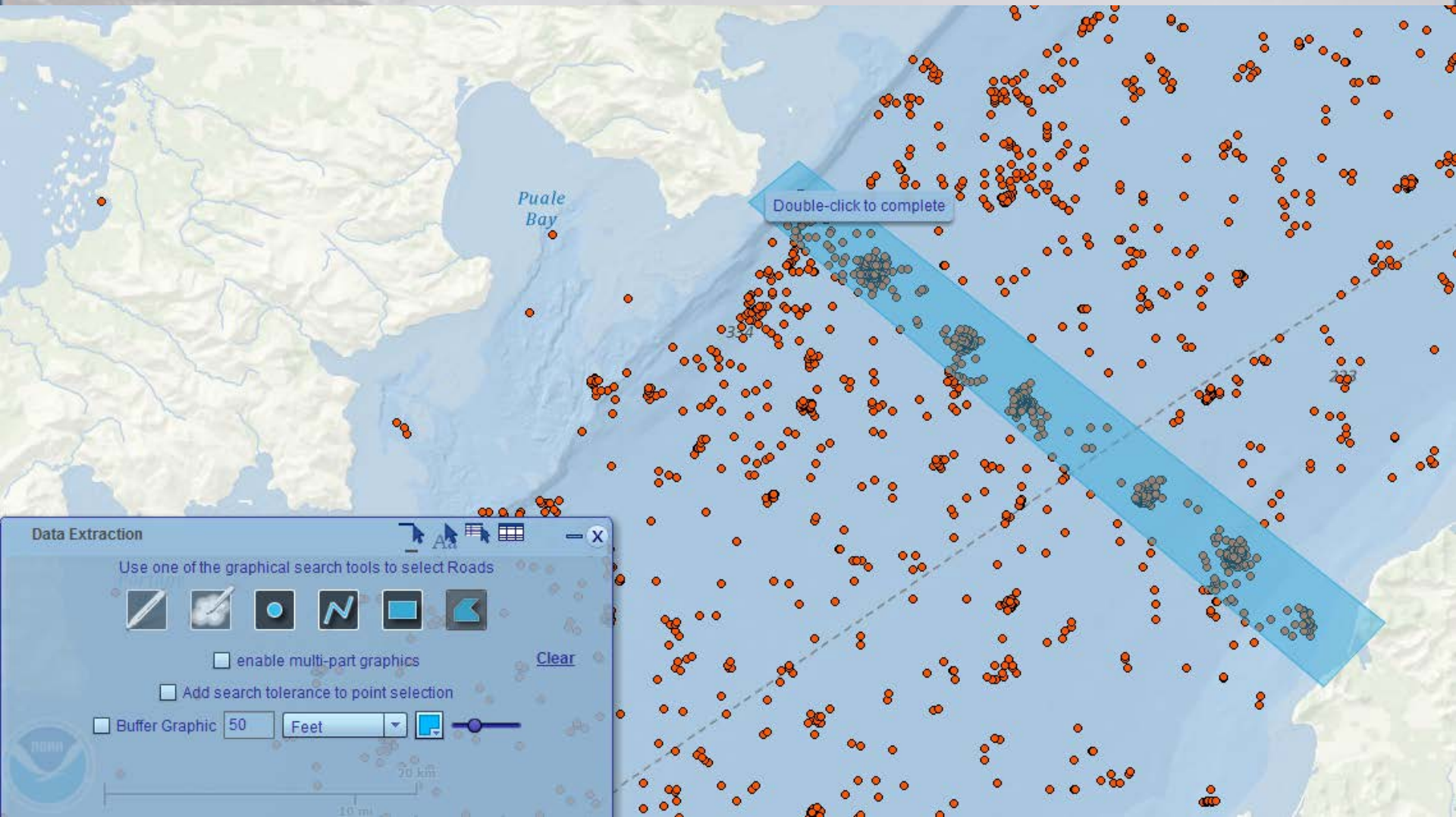


# Main Interface

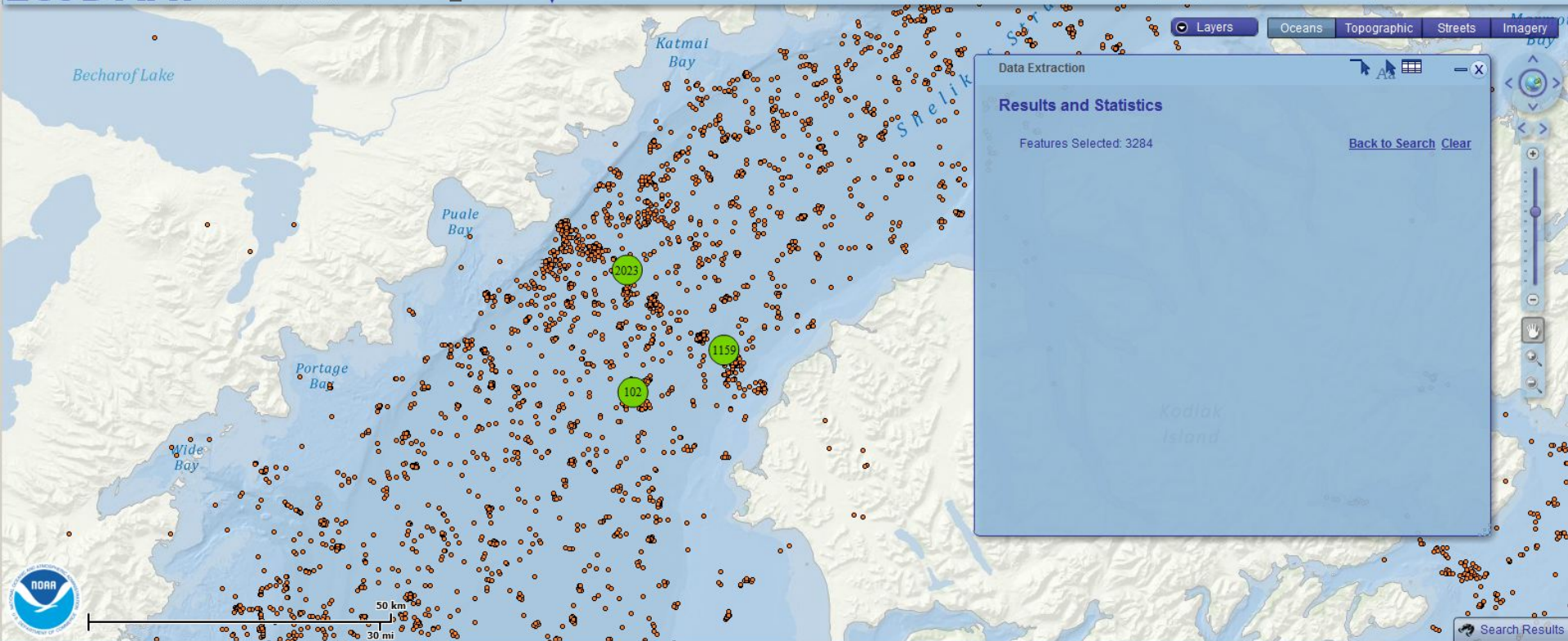




# Map-based Data Selection



# Results

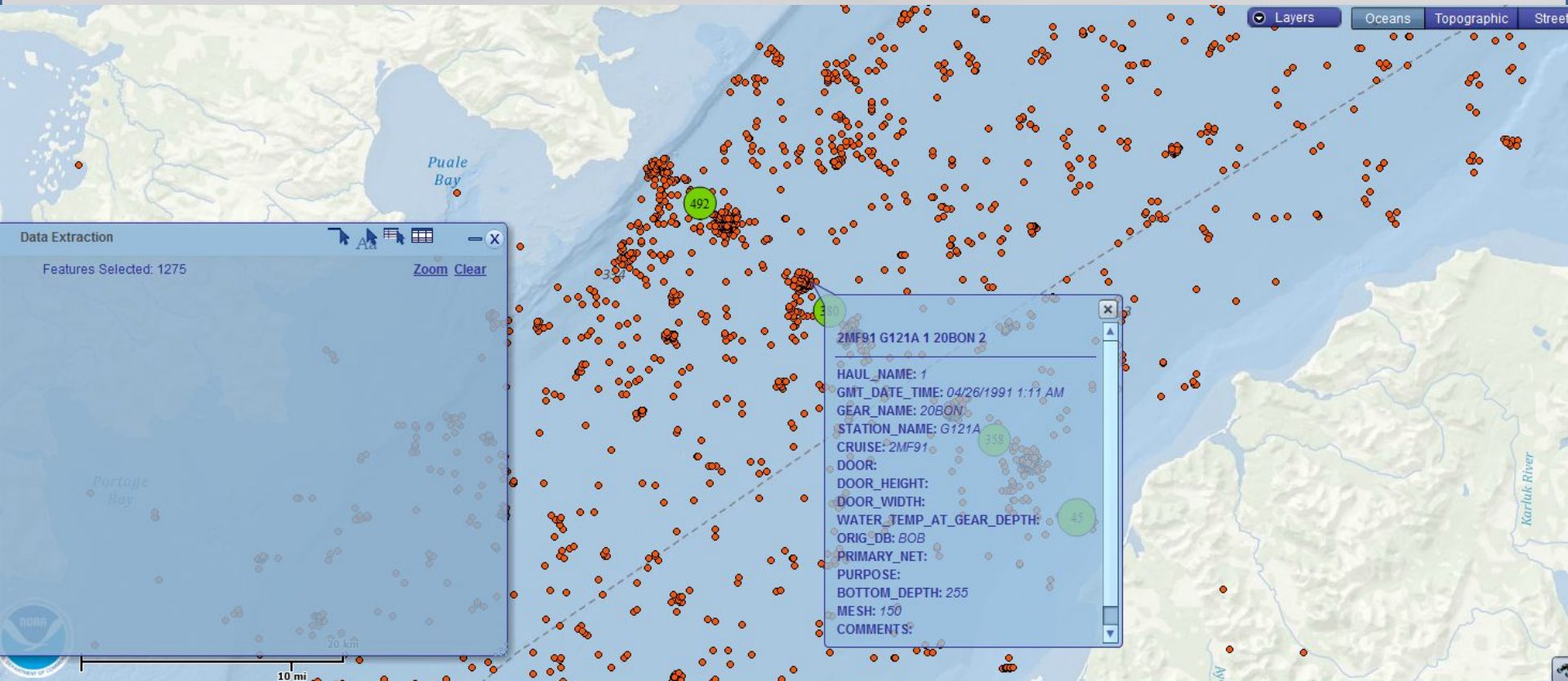


CRUISE	HAUL_NAME	LAT	LON	PURPOSE	MAX_GEAR_DEPTH	SEA_SURFACE_TEMP_C	GMT_DATE_TIME	PROJECT
1MF02	1	57.484829999999995	-154.80766	PHYS	197		02/04/2002 11:19 P	
1MF02	1	57.679829999999995	-155.18683	PHYS	290		02/05/2002 5:53 AM	
1MF02	1	57.642	-155.07150000000001	PHYS	243		02/05/2002 6:48 AM	
1MF02	1	57.60783	-155.01199	PHYS	227		02/05/2002 7:36 AM	
1MF02	1	57.553329999999995	-154.87134	PHYS	217		02/05/2002 8:29 AM	

Latitude: 57.327 Longitude: -152.557



# Querying and Exporting Data

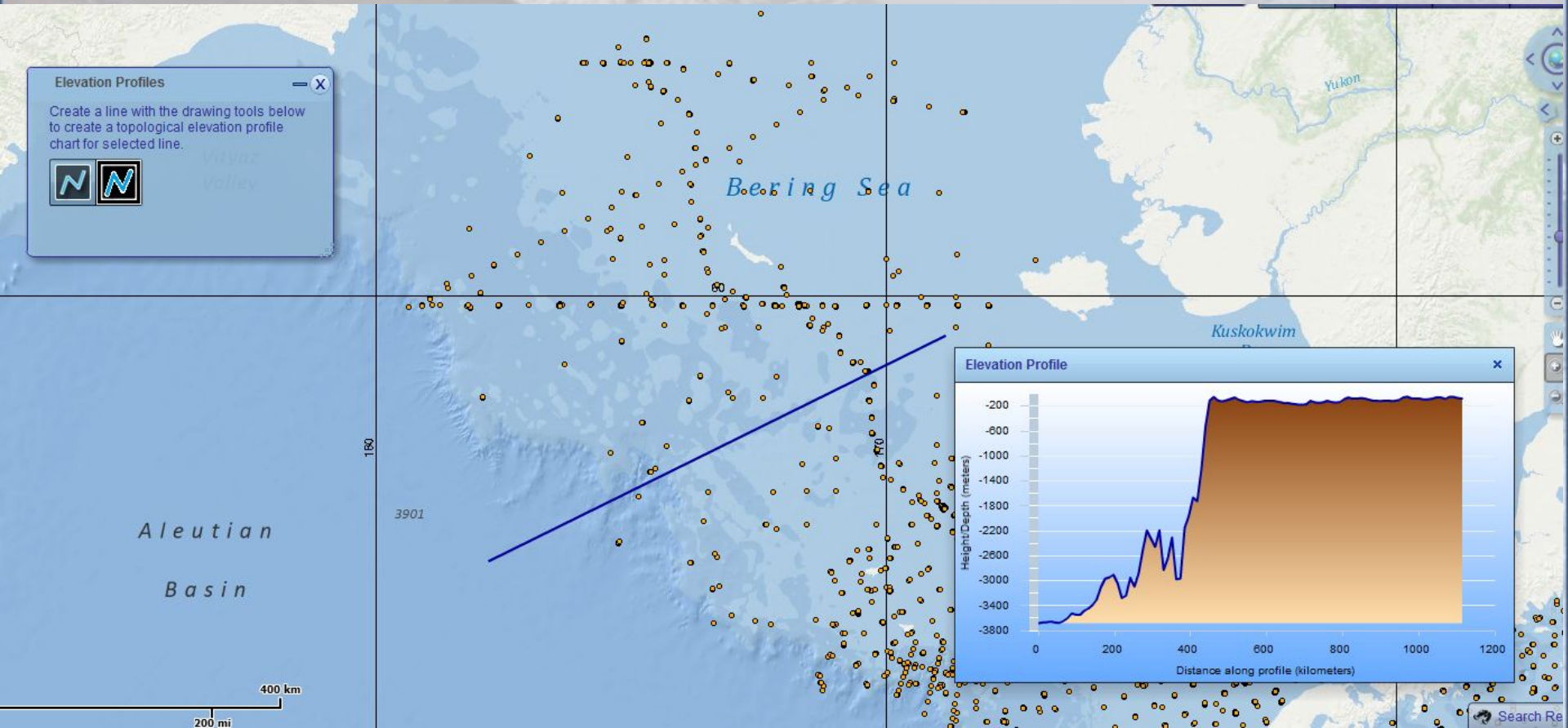


2MF91 G121A 1 20BON 2  
 HAUL\_NAME: 1  
 GMT\_DATE\_TIME: 04/26/1991 1:11 AM  
 GEAR\_NAME: 20BON  
 STATION\_NAME: G121A  
 CRUISE: 2MF91  
 DOOR:  
 DOOR\_HEIGHT:  
 DOOR\_WIDTH:  
 WATER\_TEMP\_AT\_GEAR\_DEPTH: 45  
 ORIG\_DB: BOB  
 PRIMARY\_NET:  
 PURPOSE:  
 BOTTOM\_DEPTH: 255  
 MESH: 150  
 COMMENTS:

HAUL_ID	HAUL_NAME	GMT_DATE_TIME	GEAR_NAME	STATION_NAME	CRUISE	WATER_TEMP_AT_GEAR_DEPTH	ORIG_DB	PRIMARY_NET	PURPOSE	BOTTOM_DEPTH	MESH	COMMENTS
2MF93 18 1 LG-CB 2	1	04/05/1993 4:17 AM	LG-CB	18	2MF93		ICHBASE	Y	OTHER	256	505	PART OF PREDATOR STUDY.
2MF88 G004A 1 60BON 1	1	04/17/1988 9:05 AM	60BON	G004A	2MF88		ICHBASE	Y	PLNKSURV	257	333	Wire angle at 30 deg.
2MF93 18 1 LG-CB 1	1	04/05/1993 4:17 AM	LG-CB	18	2MF93		ICHBASE	Y	OTHER	256	505	PART OF PREDATOR STUDY. Wire ang
2MF91 G121A 1 20BON 2	1	04/26/1991 1:11 AM	20BON	G121A	2MF91		BOB			255	150	

Map Time: Apr 26, 1972 - Oct 29, 2011 Records: 1275  Export to CSV  Export to Txt

# Spatial Analyses





# Tiered Access

- Takes about 1 – 1.5 years from sample collection to completion of full QA/QC
- Ichthyoplankton and zooplankton samples sent to Poland for processing and identification. Verified at AFSC
- 3 levels of access
  - Full database for local researchers
  - 2 years and older for collaborators
  - 5 years and older for general public



# Implementation in the Cloud

- Technically straightforward
- Authentication allows public presence of web front end
- Limiting denial of service attacks
- Security concerns about cloud deployment
- FISMA certification
- Updates and recertification