

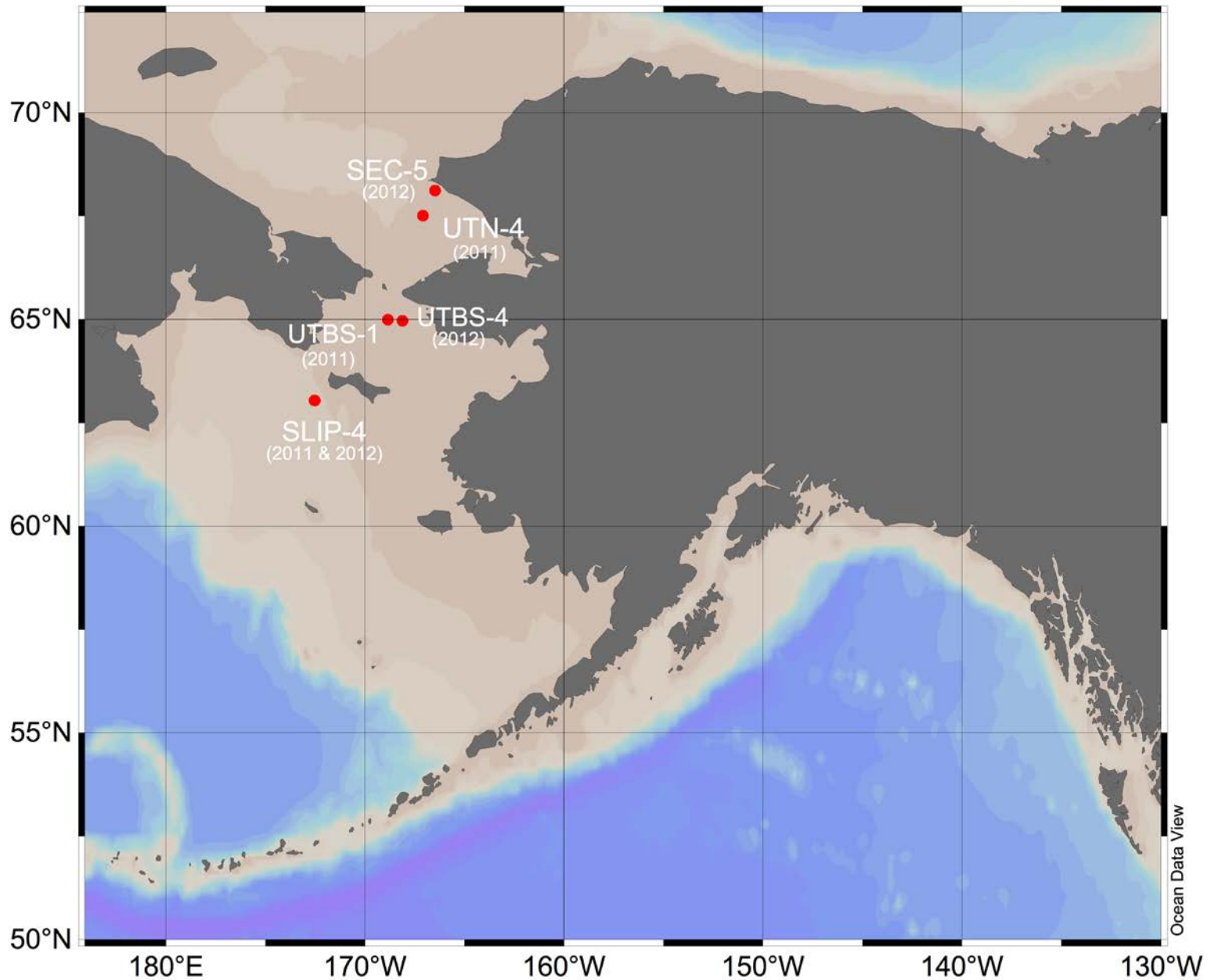
University of Victoria

Diana Varela's team contribution to DBO

- We participated in DBO cruises in July 2011 and July 2012
- We plan to continue in 2013 (and in the future) if ships, funding and people are available
- Sampling/measurements done at 6 depths (euphotic zone) at each station:
 - Dissolved nutrient concentrations (NO_3 , PO_4 and $\text{Si}(\text{OH})_4$)
 - Size-fractionated chlorophyll-a concentrations
 - Biogenic silica concentrations
 - Particulate C and N concentrations
 - Carbon and Nitrogen uptake rates
(incubations with ^{13}C -bicarbonate and $^{15}\text{NO}_3$)
 - Phytoplankton composition (samples to Jackie for analysis by colleagues)

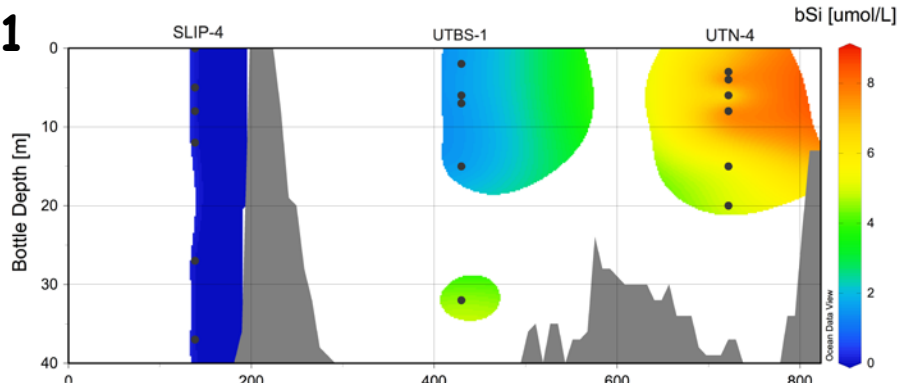
Note: due to freezer problems we lost many samples during 2011 (all chlorophylls and nutrients, biogenic Si and C/N incubations for last station)

Station locations 2011 & 2022

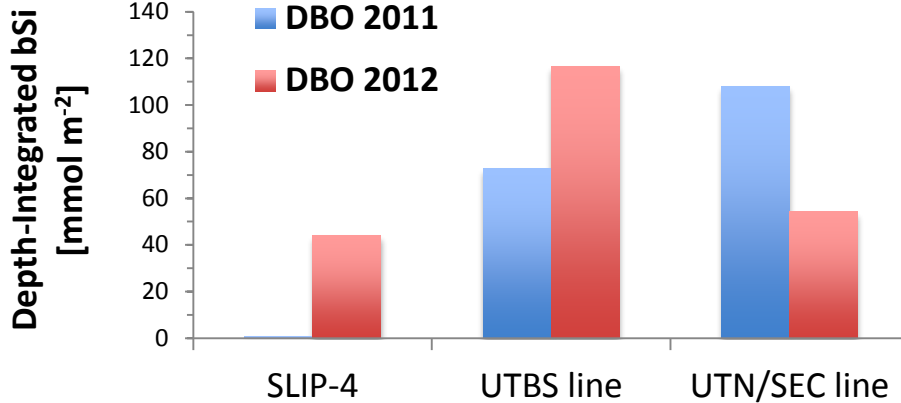
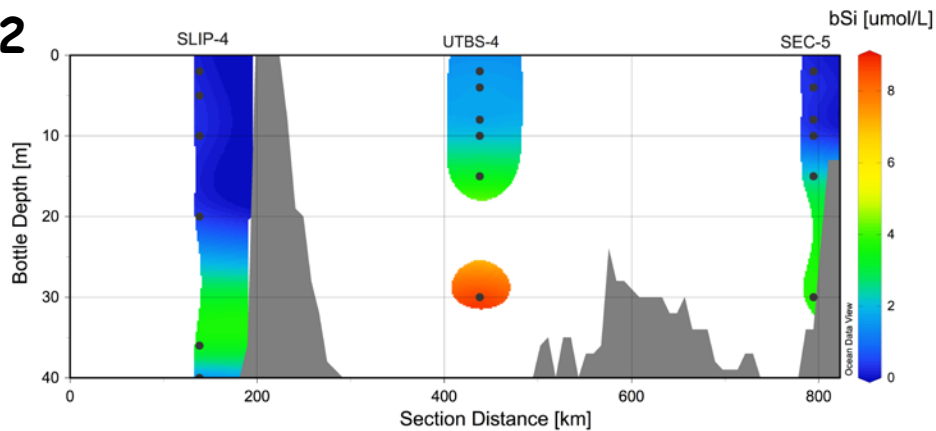


Biogenic Silica Concentrations

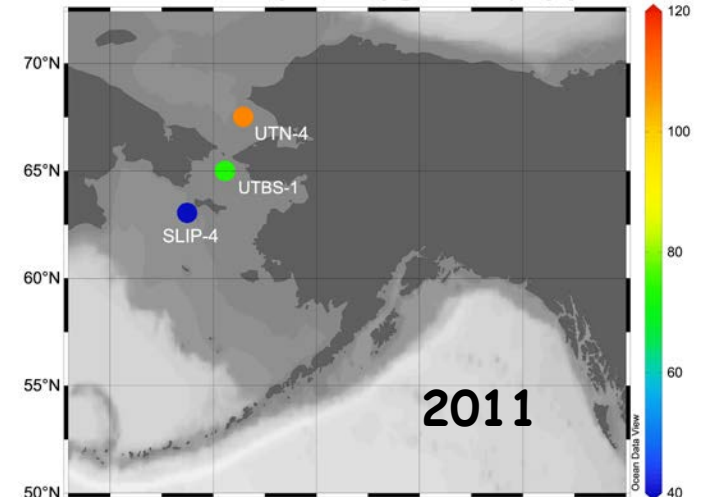
2011



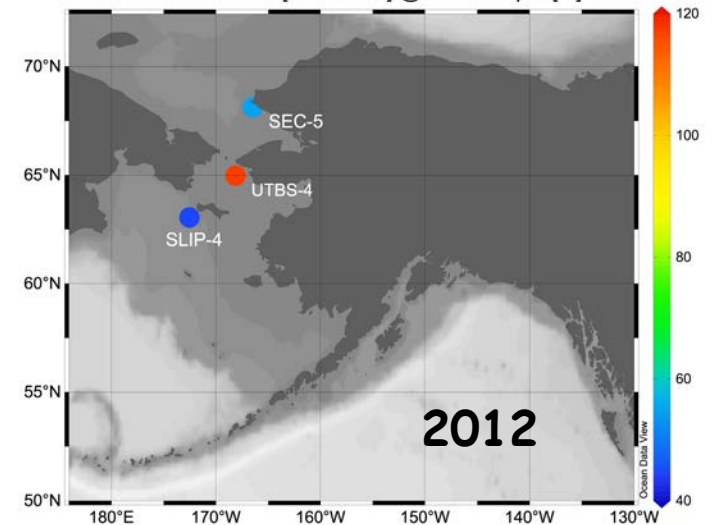
2012



INTEGRATED bSi [mmol/m²] @ Bottle Depth [m]=first

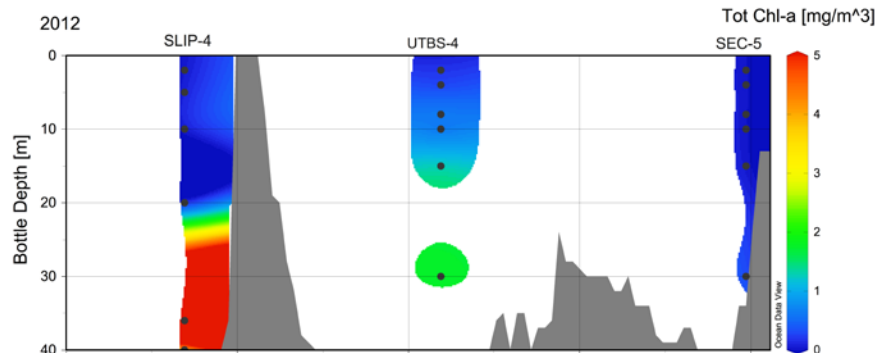


INTEGRATED bSi [mmol/m²] @ Bottle Depth [m]=first

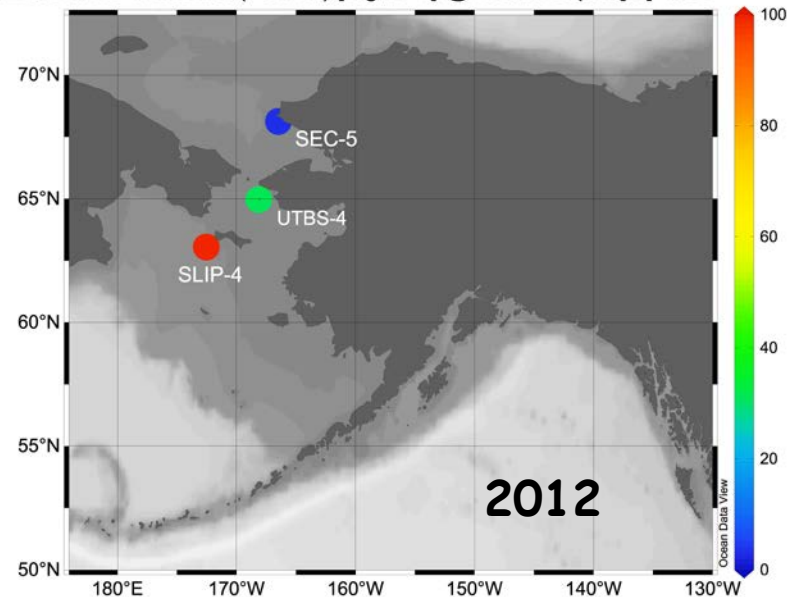


Total and Size-fractionated Chl-*a* Concentrations (2012)

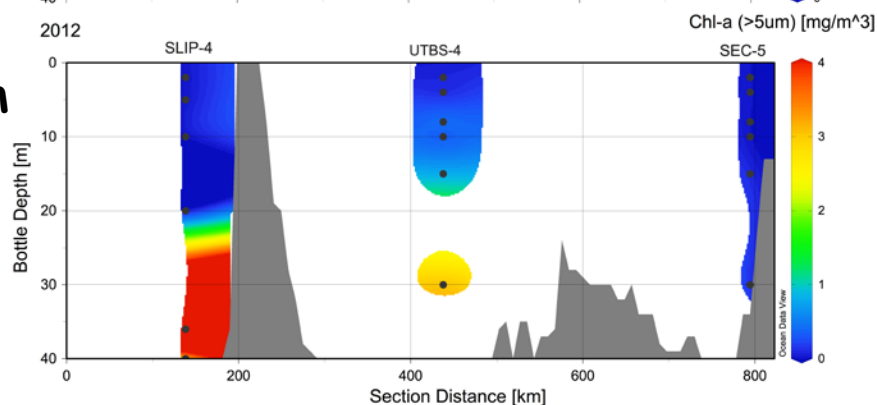
Total



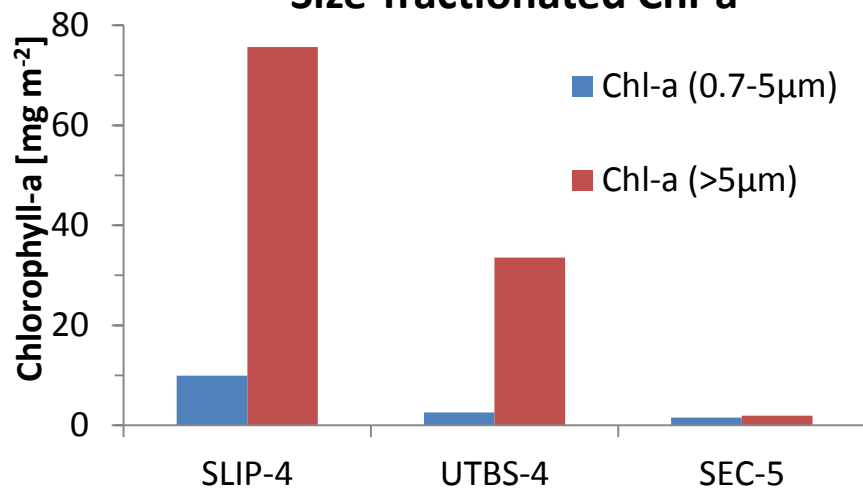
INTEGRATED Tot Chl-*a* (>0.7 m) [mg/m²] @ Bottle Depth [m]=first



> 5 μm



Size-fractionated Chl-*a*



Percentage of cells >5μm

